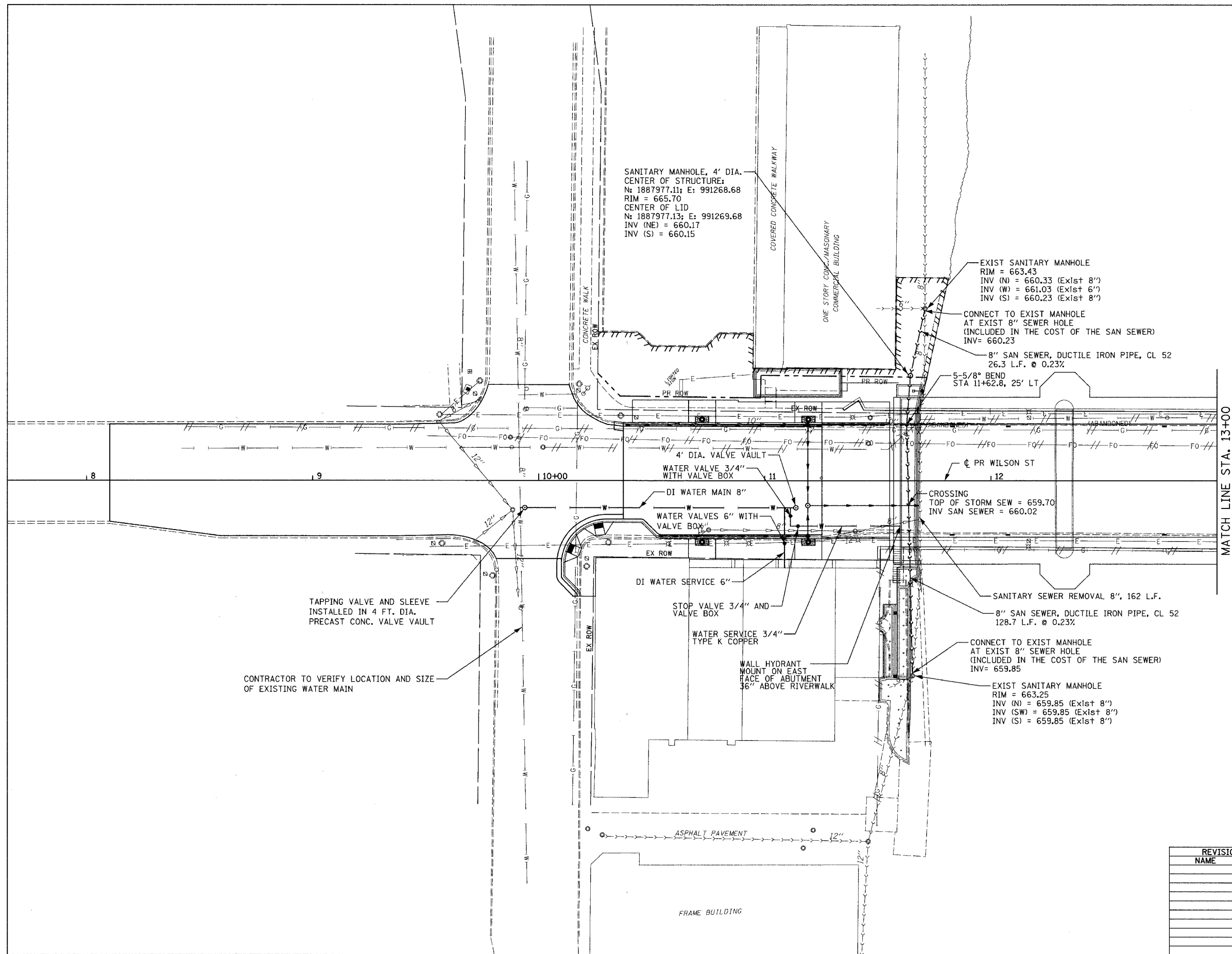


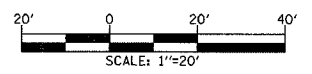
F.A.U. RTE.	SECTION	COUNTY	TOTAL SHEETS	SHEET NO.
1441	00-00059-00-BR	KANE	154	34
STA. 10+00		TO STA. 13+00		
FED. ROAD DIST. NO.	ILLINOIS FED. AID PROJECT			



MATCH LINE STA. 13+00

TAPPING VALVE AND SLEEVE
INSTALLED IN 4 FT. DIA.
PRECAST CONC. VALVE VAULT

CONTRACTOR TO VERIFY LOCATION AND SIZE
OF EXISTING WATER MAIN



REVISIONS	
NAME	DATE

ILLINOIS DEPARTMENT OF TRANSPORTATION
WILSON STREET
UTILITY RELOCATION PLAN
STA 10+00 TO STA 13+00
SCALE: 1"=20'
DATE 07/28/2006
DRAWN BY AWM
CHECKED BY AKK

PLOT DATE: 09/14/2006
 FILE NAME: 1162008conulldgrutilrelocat01.dgn
 PLOT SCALE: #SCALE#
 USER NAME: #USER#

...\\111108\work\1162008\1162008.dgn 09/14/2006 08:38:34 AM