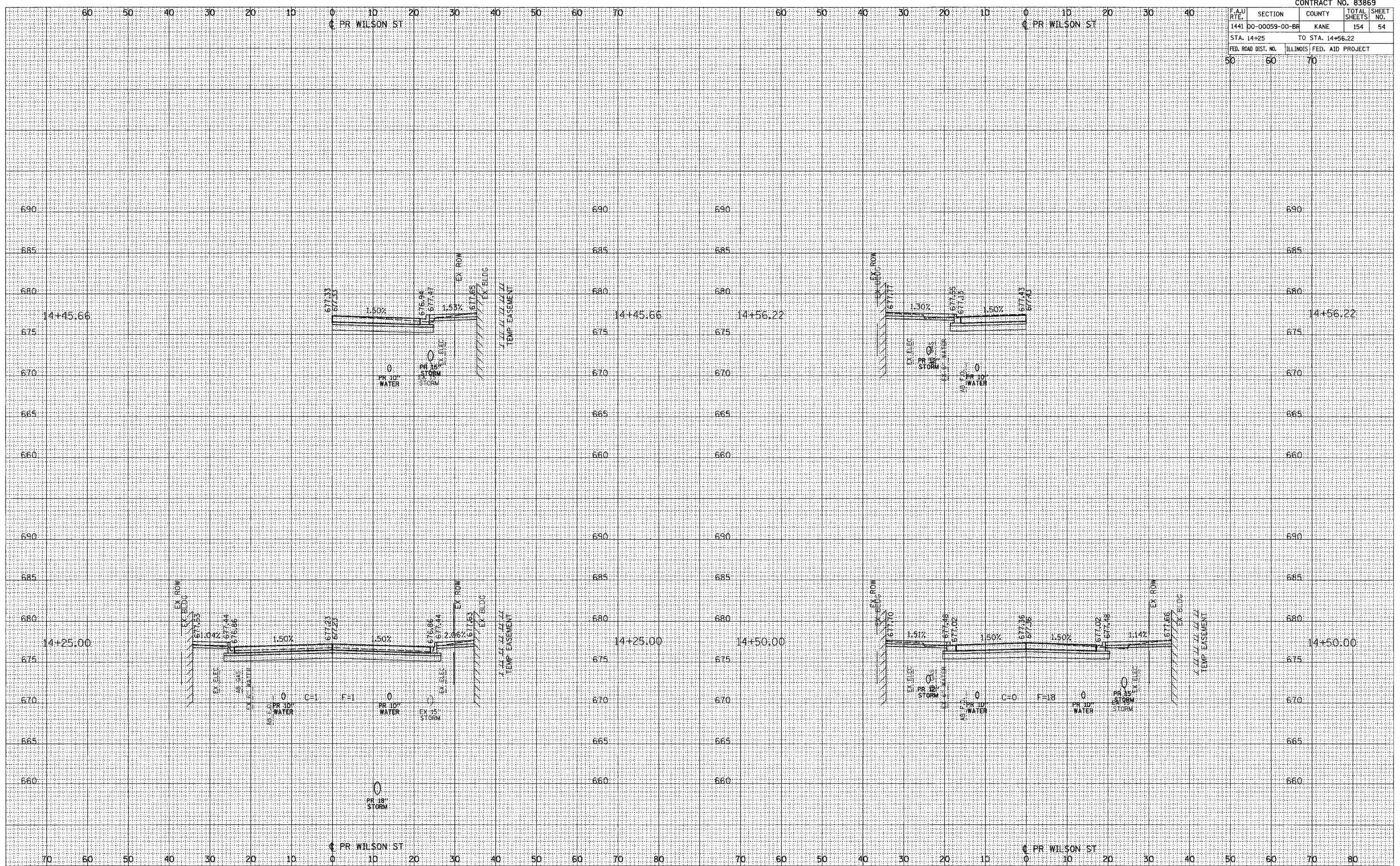


CONTRACT NO. 83869				
F.A.U. RTE.	SECTION	COUNTY	TOTAL SHEETS	SHEET NO.
1441	00-00059-00-BR	KANE	154	54
STA. 14+25		TO STA. 14+56.22		
FED. ROAD DIST. NO.	ILLINOIS	FED. AID PROJECT		
50	60	70		

SURVEY PLOTTED  
 NOTE BOOK TEMPLATE  
 AREAS CHECKED  
 NO.

SURVEY PLOTTED  
 NOTE BOOK TEMPLATE  
 AREAS CHECKED  
 NO.

PLOT DATE = 7/25/2006  
 FILE NAME = #FILE#  
 PLOT SCALE = #SCALE#  
 USER NAME = #USER#



CROSS SECTIONS STA 14+25 TO STA 14+56.22