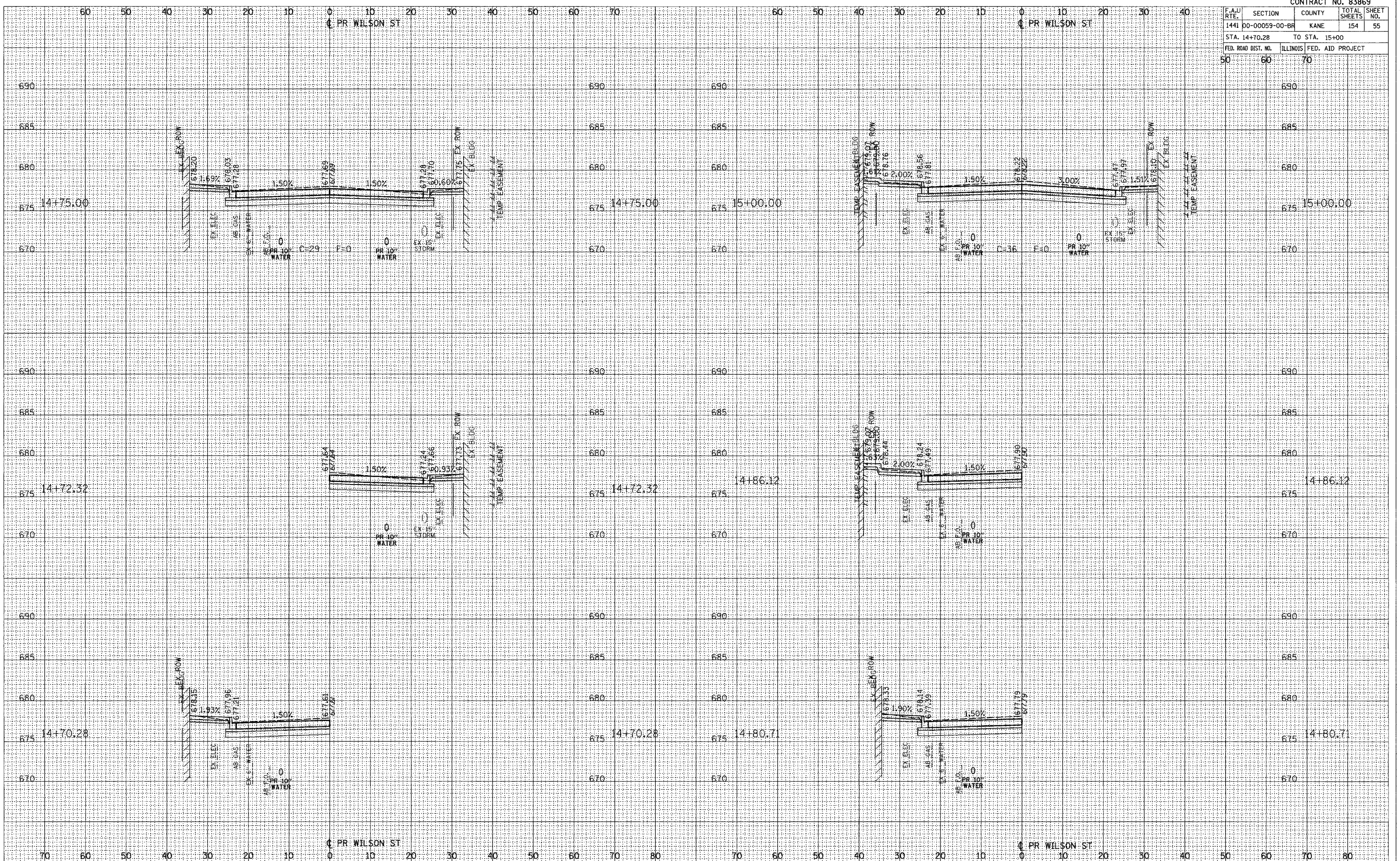


CONTRACT NO. 83869				
F.A.U. RTE.	SECTION	COUNTY	TOTAL SHEETS	SHEET NO.
1441 D0-00059-00-BF		KANE	154	55
STA. 14+70.28		TO STA. 15+00		
FED. ROAD DIST. NO.		ILLINOIS FED. AID PROJECT		

SURVEY PLOTTED
 NOTE BOOK TEMPLATE
 NO. AREAS CHECKED

SURVEY PLOTTED
 NOTE BOOK TEMPLATE
 NO. AREAS CHECKED

PLOT DATE 7/25/2006
 PLOT SCALE 1"=40'
 USER NAME



CROSS SECTIONS STA 14+70.28 TO STA 15+00