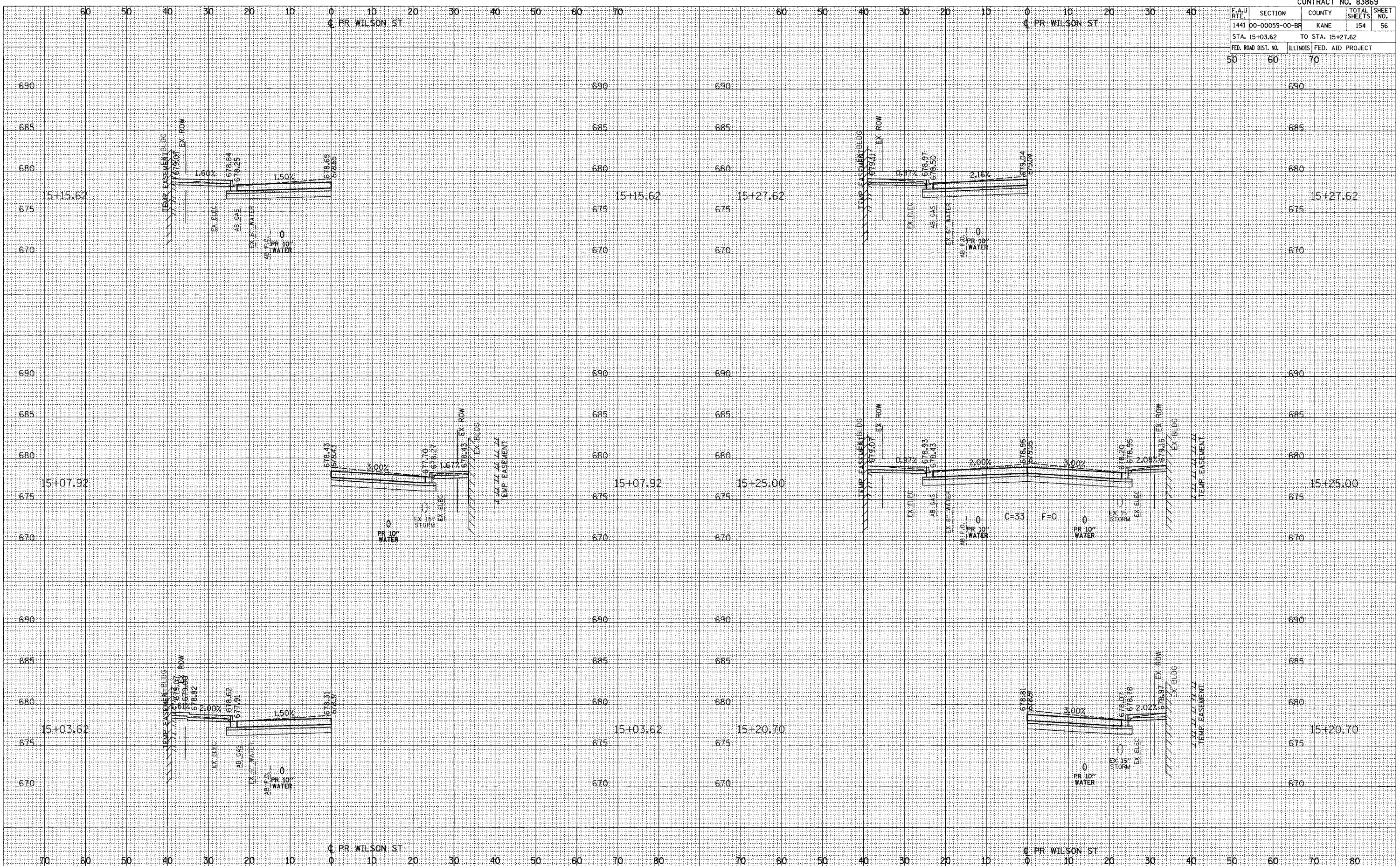


CONTRACT NO. 83869			
F.A.U. RTE.	SECTION	COUNTY	TOTAL SHEETS
1441	00-00059-00-BF	KANE	154
STA. 15+03.62		TO STA. 15+27.62	
FED. ROAD DIST. NO.	ILLINOIS FED. AID PROJECT		

SURVEY PLOTTED  
 NOTE BOOK TEMPLATE  
 NO. AREAS CHECKED

SURVEY PLOTTED  
 NOTE BOOK TEMPLATE  
 NO. AREAS CHECKED

PLOT DATE 7/25/2006  
 PLOT SCALE 1"=40'  
 USER NAME \*USER\*



CROSS SECTIONS STA 15+03.62 TO STA 15+27.62