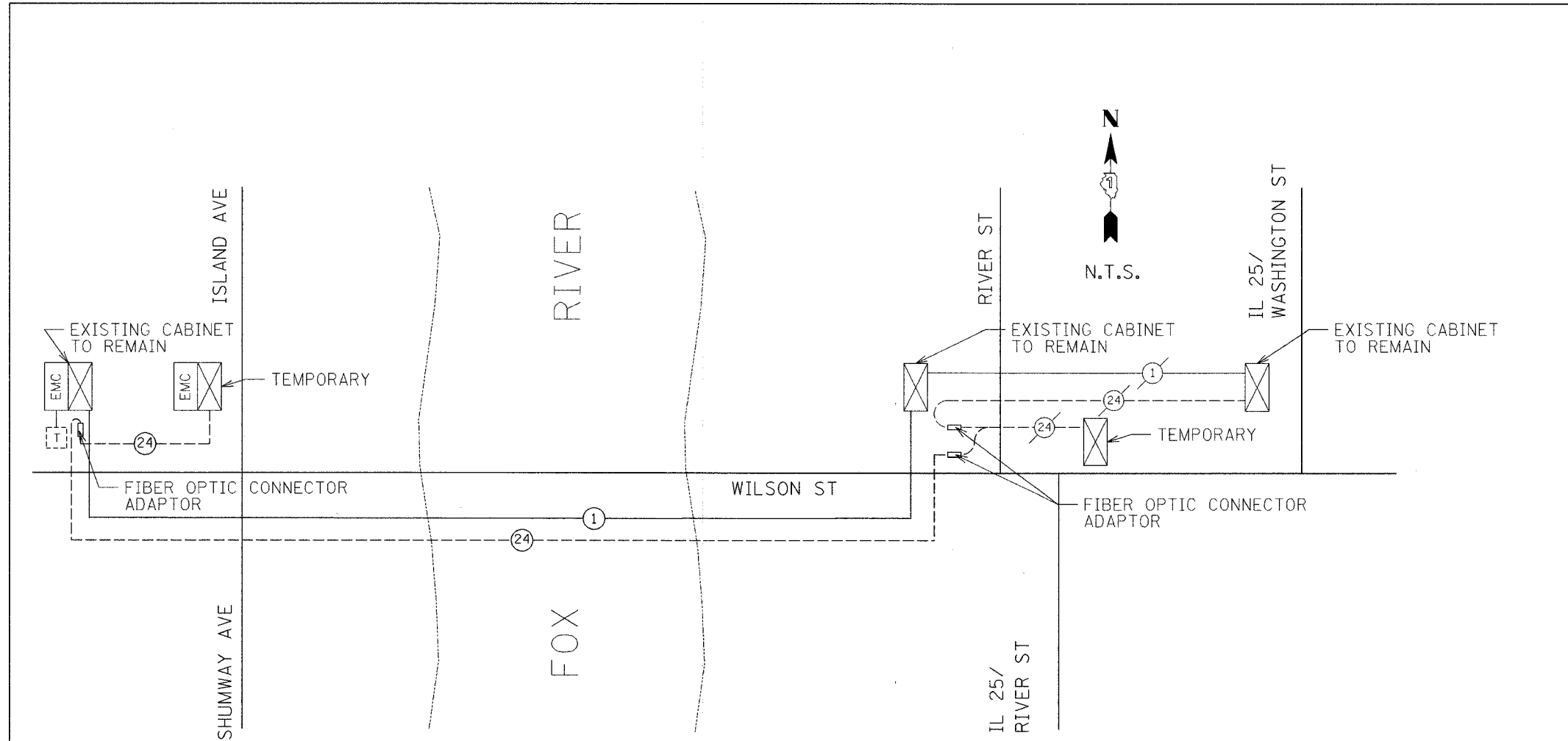


F.A.U. RTE.	SECTION	COUNTY	TOTAL SHEETS	SHEET NO.
1441	00-00059-00-BR	KANE	154	69
STA. N/A		TO STA. N/A		
FED. ROAD DIST. NO.		ILLINOIS FED. AID PROJECT		

INTERCONNECT SCHEMATIC LEGEND

EXISTING INTERSECTION CONTROLLER	
PROPOSED INTERSECTION CONTROLLER	
EXISTING MASTER CONTROLLER	
PROPOSED MASTER CONTROLLER	
MASTER MASTER CONTROLLER	
EXISTING INTERSECTION & SAMPLING (SYSTEM) DETECTORS	
PROPOSED INTERSECTION & SAMPLING (SYSTEM) DETECTORS	
EXISTING INTERSECTION LOOP DETECTORS	
PROPOSED SAMPLING (SYSTEM) DETECTORS	
EXISTING SAMPLING (SYSTEM) DETECTORS	
PROPOSED SAMPLING (SYSTEM) DETECTORS	
EXISTING SAMPLING (SYSTEM) DETECTORS; PROPOSED INTERSECTION AND SAMPLING (SYSTEM) DETECTORS.	
EXISTING SAMPLING (SYSTEM) DETECTORS; PROPOSED SAMPLING (SYSTEM) DETECTORS.	
EXISTING PREFORMED INTERSECTION & SAMPLING (SYSTEM) DETECTORS	
PROPOSED PREFORMED INTERSECTION & SAMPLING (SYSTEM) DETECTORS	
EXISTING SAMPLING (SYSTEM) PREFORMED DETECTORS	
PROPOSED SAMPLING (SYSTEM) PREFORMED DETECTORS	
EXISTING FIBER OPTIC CABLE IN CONDUIT, NO. 62.5/1 25. MM 12F SM12F	
PROPOSED FIBER OPTIC CABLE IN CONDUIT, NO. 62.5/125, MM 12F SM12F	
EXISTING INTERCONNECT CABLE - NO. 62.5/125 12F FIBER OPTIC CABLE	
PROPOSED INTERCONNECT CABLE - NO. 62.5/125 12F FIBER OPTIC CABLE	
EXISTING INTERCONNECT CABLE - NO. 18 3 PAIR TWISTED, SHIELDED	
PROPOSED INTERCONNECT CABLE - NO. 18 3 PAIR TWISTED, SHIELDED	
EXISTING LOOP DETECTOR CABLE 2/C TWISTED, SHIELDED	
PROPOSED LOOP DETECTOR CABLE 2/C TWISTED, SHIELDED	
EXISTING ELECTRIC CABLE, 1/C (AS SPECIFIED)	
PROPOSED ELECTRIC CABLE, 1/C (AS SPECIFIED)	
EXISTING TELEPHONE CONNECTION	
PROPOSED TELEPHONE CONNECTION	



NOTES FOR TEMPORARY INTERCONNECT

- PRIOR TO THE START OF STAGE 2 CONSTRUCTION, A TEMPORARY FIBER OPTIC CABLE SHALL BE INSTALLED IN CONDUIT AT ISLAND / SHUMWAY FROM THE EXISTING CABINET TO THE TEMPORARY CABINET. THE TEMPORARY FIBER OPTIC CABLE SHALL HAVE MULTIMODE CONNECTORS INSTALLED ON TWO PAIRS OF FIBERS IN EACH CABINET. THE CONNECTORS ON THE PROPOSED FIBER OPTIC CABLE FROM IL 25 / RIVER STREET SHALL BE CONNECTED TO THE CONNECTORS ON THE TEMPORARY FIBER OPTIC CABLE IN THE EXISTING CABINET USING ADAPTERS RECOMMENDED BY THE CONNECTOR MANUFACTURER. THE CONNECTORS ON THE TEMPORARY FIBER OPTIC CABLE AT THE TEMPORARY CABINET SHALL BE CONNECTED TO THE CONTROLLER MODEM.
- A PROPOSED 62.5/125 MM 12F SM 12F CABLE SHALL BE INSTALLED IN THE NEW AND EXISTING CONDUIT BETWEEN THE EXISTING TRAFFIC SIGNAL CONTROLLER CABINETS ON WILSON STREET AT ISLAND AVENUE / SHUMWAY AVENUE AND AT IL 25 / RIVER STREET.
- THE CONNECTORS ON THE PROPOSED FIBER OPTIC CABLE TO ISLAND / SHUMWAY AVENUE SHALL BE CONNECTED TO THE CONNECTORS ON THE TEMPORARY FIBER OPTIC CABLE IN THE EXISTING CABINET USING ADAPTERS RECOMMENDED BY THE CONNECTOR MANUFACTURER.

PLOT DATE = 08/13/2006
 FILE NAME = s112005conv11dgn.ctb
 PLOT SCALE = #SCALE#
 USER NAME = #USER#

REVISIONS	
NAME	DATE

ILLINOIS DEPARTMENT OF TRANSPORTATION
 WILSON STREET
 TEMPORARY
 INTERCONNECT SCHEMATIC
 STAGE 2 AND STAGE 3

SCALE: NTS
 DATE 07/28/2006
 DRAWN BY JW
 CHECKED BY AKK