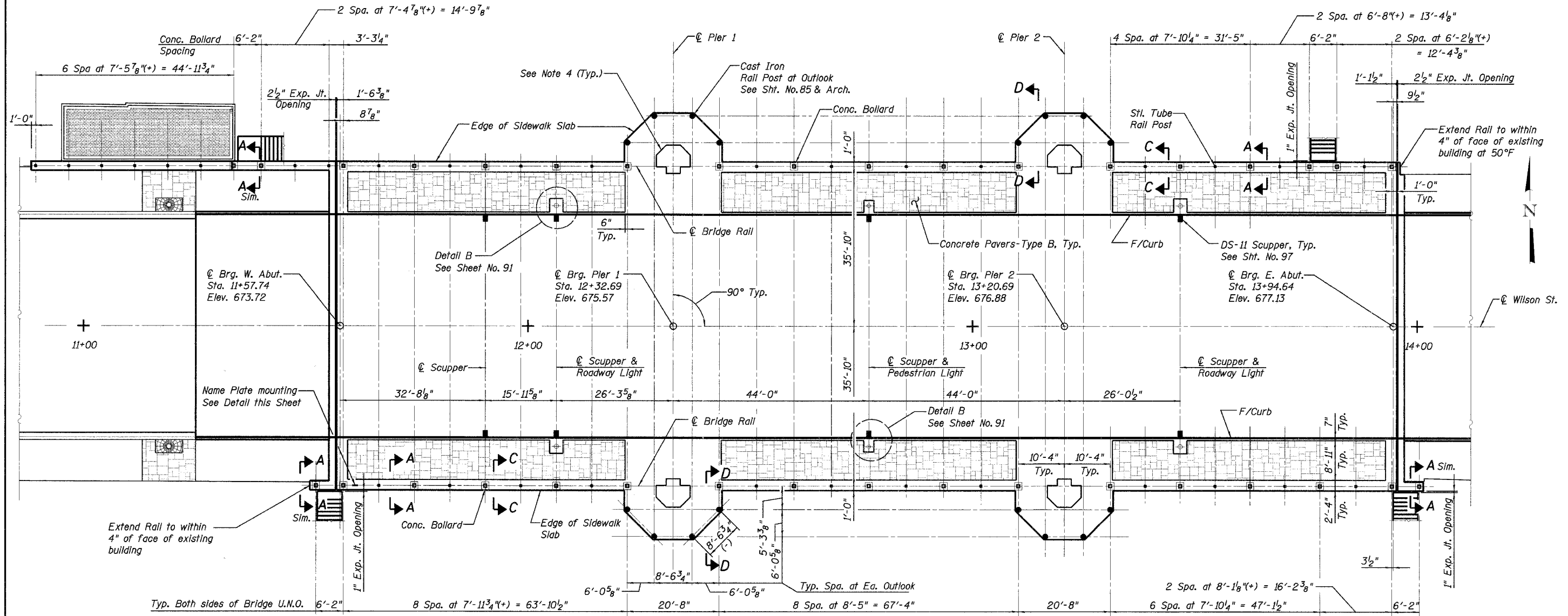


STATE OF ILLINOIS  
DEPARTMENT OF TRANSPORTATION

ROUTE NO.	SECTION	COUNTY	SHEETS	SHEET NO.	SHEET NO. S12 of S52 SHEETS
FAU 1441	00-00059-00-BR	KANE	154	83	
FED. ROAD DIST. NO. 7		ILLINOIS		FED. AID PROJECT	

Contract # 83869



**PLAN**  
Scale: 3/32"=1'-0"

**NOTES**

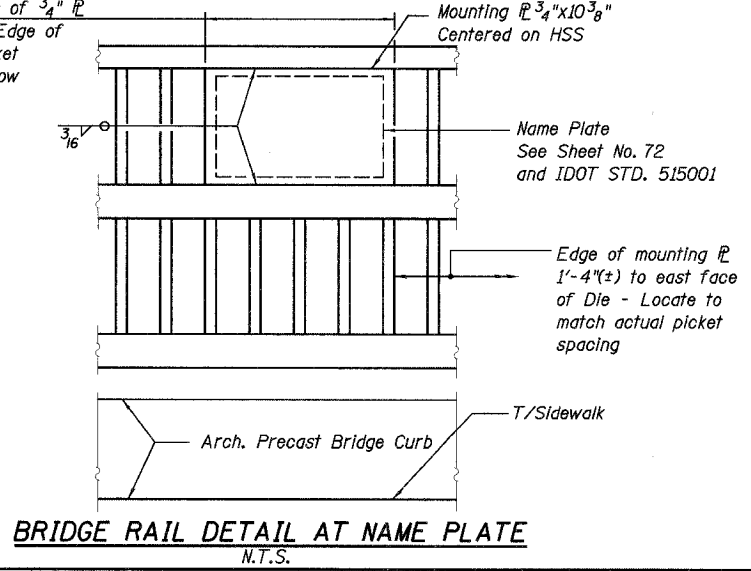
1. For Section A-A and C-C See Sheet No. 84
2. For Section D-D See Sheet No. 85
3. For Expansion Joints See Sheet No. 110 and 111
4. For bench/planter assemblies at outlooks See Arch.
5. For Profile Grade Line and elevations along centerline of bridge See Sheet No. 72 & 86
6. Establish E/Sidewalk Elevations per Deck Grades on Sheet No. 86

**BRIDGE RAIL & OUTLOOK RAIL NOTES**

1. All vertical surfaces are perpendicular to true horizontal (plumb). This includes posts, pickets, precast dies, etc., along all bridge rail and pedestrian rail at the outlooks.
2. Horizontal surfaces are parallel to true horizontal to the elevation at the outside edge of sidewalk at the centerline of each die/concrete bollard. The steel bridge rail spanning between two consecutive dies/concrete bollards will be a straight line parallel (tangent) to the profile grade line, between the centerlines of each die/concrete bollard. The minimum bridge rail height of 3'-6" must be maintained.

**BRIDGE RAIL LAYOUT**  
**WILSON ST OVER FOX RIVER**  
**SECTION 00-00059-00-BR**  
**KANE COUNTY**  
**STRUCTURE NO. 045-6051**

DESIGNED	GWS
CHECKED	DWH
DRAWN	EF
CHECKED	DWH



**BRIDGE RAIL DETAIL AT NAME PLATE**  
N.T.S.

**LOCHNER**  
H.W. LOCHNER, INC., CHICAGO, ILLINOIS