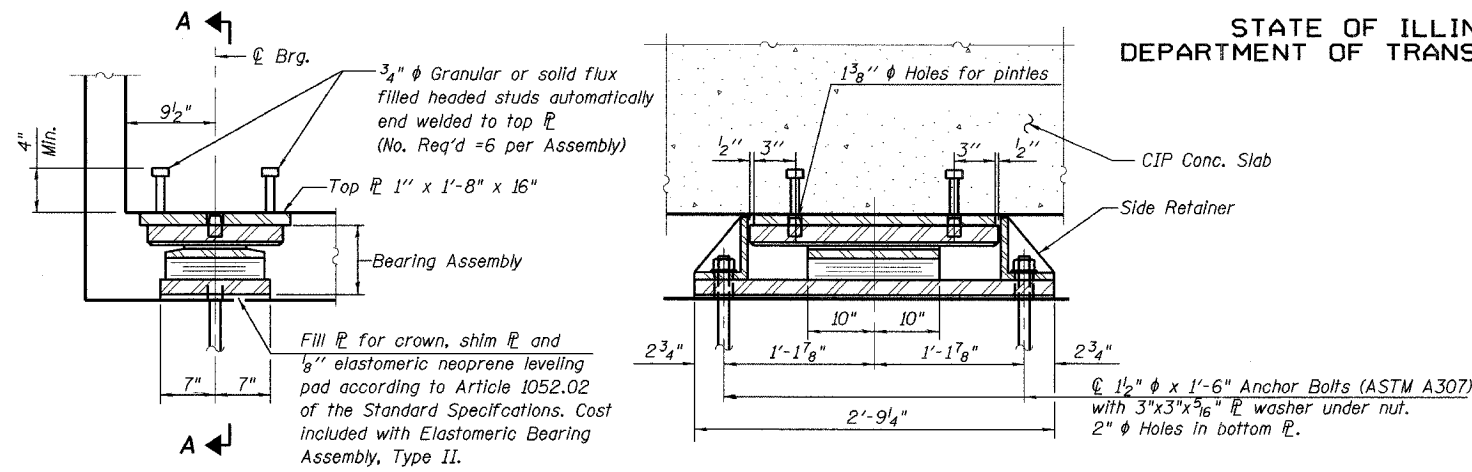


STATE OF ILLINOIS
DEPARTMENT OF TRANSPORTATION

ROUTE NO.	SECTION	COUNTY	SHEET NO.	SHEET NO.
FAU 1441	00-00059-00-BR	KANE	154	94
FED. ROAD DIST. NO. 7		ILLINOIS	FED. AID PROJECT-	

Contract # 83869

SHEET NO. S23
of S52 SHEETS

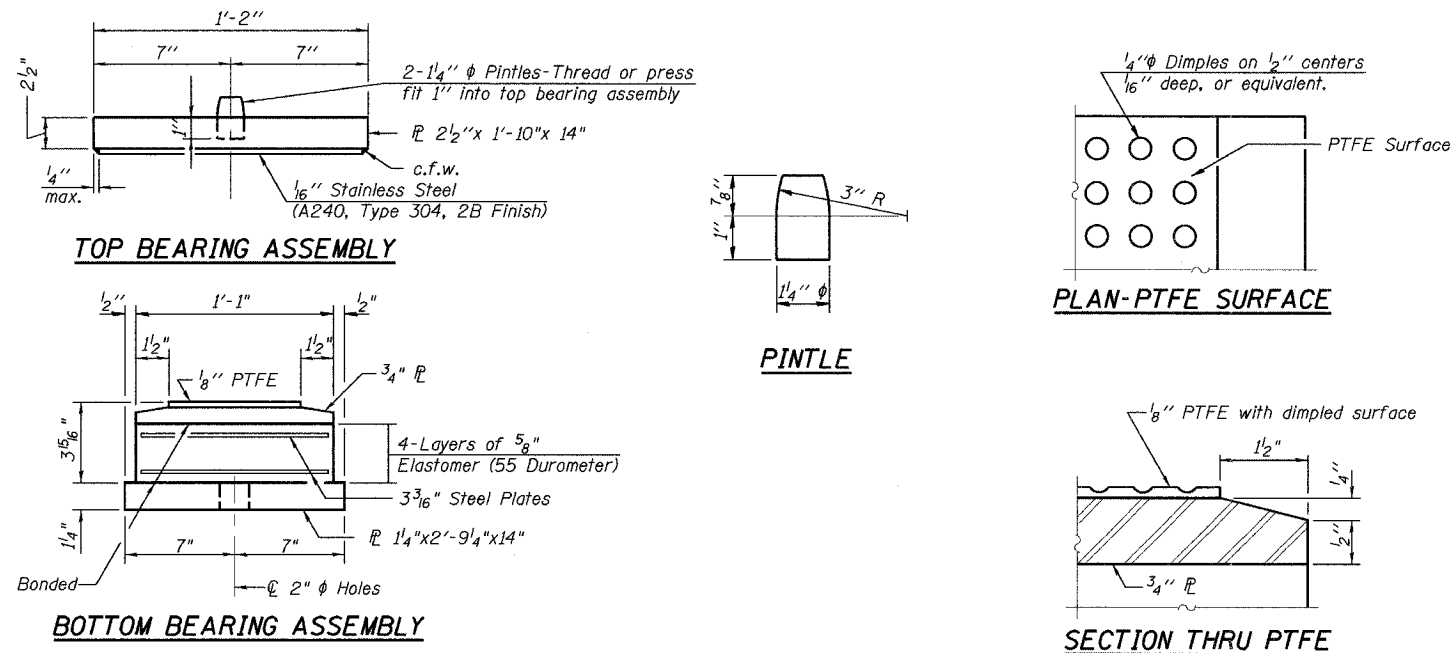


Notes:
 The 1/8" PTFE sheet shall be bonded directly to the top steel plate with a two-component, medium viscosity epoxy resin, conforming to the requirements of the Federal Specification MMM-A-134, Type I. The bond agent shall be applied on the full area of the contact surfaces. Bonding of 1/8" PTFE sheet during vulcanizing process will be permitted provided the process and method of adjusting assembly height is approved by the Engineer. See sheet No.96 for anchor bolt installation.

SECTION AT ABUT.

SECTION A-A

TYPE II ELASTOMERIC EXP. BRG.



TOP BEARING ASSEMBLY

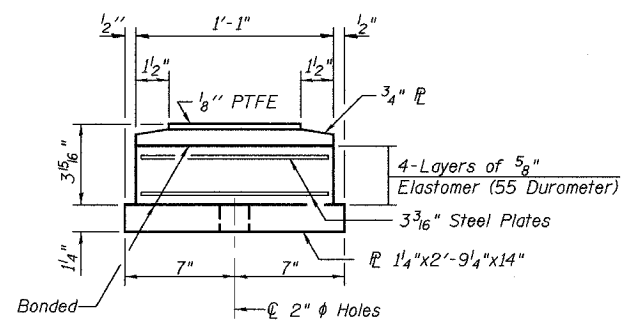
PINTLE

PLAN-PTFE SURFACE

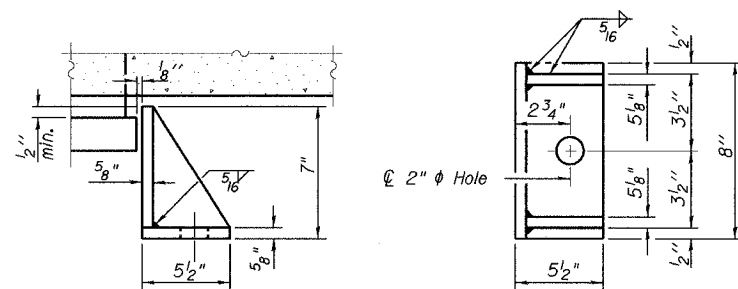
SECTION THRU PTFE

TOP PLATE

Cost Included with "Elastomeric Bearing Assembly, Type II"

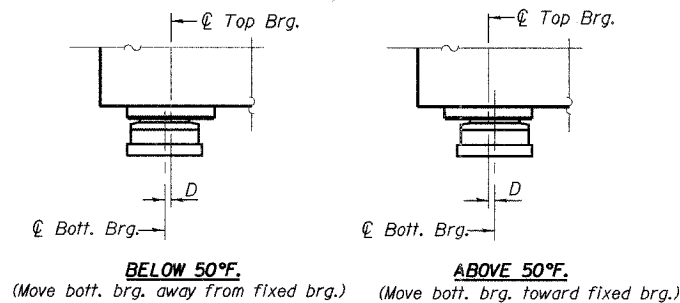


BOTTOM BEARING ASSEMBLY



SIDE RETAINER

Cost included with Elastomeric Bearing Assembly, Type II. Equivalent rolled angle with stiffeners will be allowed in lieu of welded plates.



SETTING ANCHOR BOLTS AT EXP. BRG.

D=1/8" per each 100" of expansion for every 15° temp. change from the normal temp. of 50°F.

NOTES

- All steel for the Type II bearings and bearing plates shall conform to the requirements of AASHTO M270 Grade 50.
- For Anchor Bolt Installation see Sheet No. 96
- For shim plate requirements see "General Notes" on Sheet No. 73
- Cost of furnishing and erecting anchor bolts, threaded studs and shim plates for the bearing assemblies is included in the cost of Elastomeric Bearings of the type specified.
- The bearing seat elevations are computed based on the bearing heights shown on the plans. Contractor shall adjust final bearing seat elevations to accommodate actual bearing heights provided by the Bearing Supplier.
- Edge distances shown are minimum distances required. Bearing shop drawings shall indicate the exact locations of anchor bolts and include provisions made by the Contractor to ensure that the anchor bolts will not interfere with reinforcement bars.

BILL OF MATERIAL

Item	Unit	Total
Elastomeric Bearing Assembly, Type II	Each	28

ABUTMENT BEARING DETAILS
WILSON ST OVER FOX RIVER
SECTION 00-00059-00-BR
KANE COUNTY
STRUCTURE NO. 045-6051

LOCHNER
 H.W. LOCHNER, INC., CHICAGO, ILLINOIS

DESIGNED - DWH
CHECKED - KSS
DRAWN - EF
CHECKED - KSS