

STATE OF ILLINOIS  
DEPARTMENT OF TRANSPORTATION

ROUTE NO.	SECTION	COUNTY	TOTAL SHEETS	SHEET NO.	SHEET NO. S40
FAU 1441	00-00059-00-BR	KANE	154	111	of 552 SHEETS
FED. ROAD DIST. NO. 7		ILLINOIS	FED. AID PROJECT		

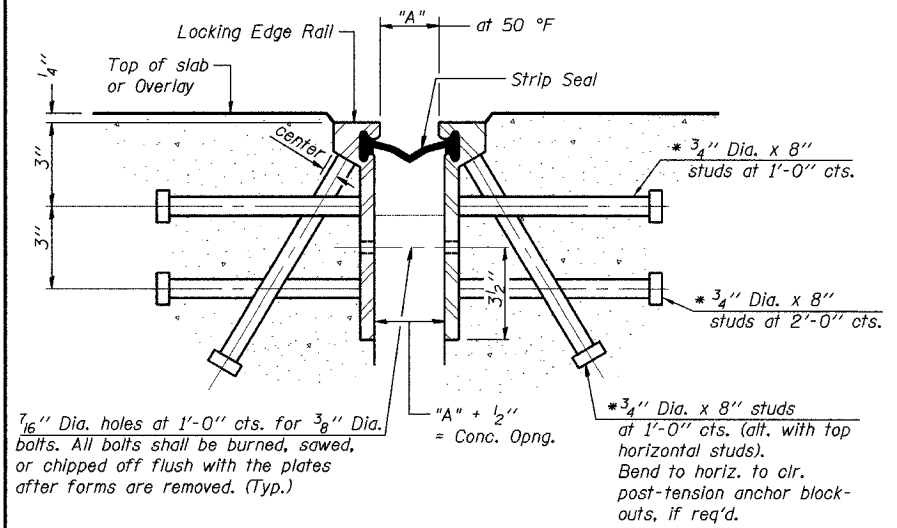
Contract # 83869

**GENERAL NOTES**

The strip seal shall be made continuous and shall have a minimum thickness of 1/4". The configuration of the strip seal shall match the configuration of the Locking Edge Rails.  
The height and thickness of the Locking Edge Rails shown are minimum dimensions. The actual configuration of the Locking Edge Rails and matching strip seal may vary from manufacturer to manufacturer. Flanged edge rails will not be allowed.  
Locking Edge Rails may be spliced at slope discontinuities and stage construction joints.  
The manufacturer's recommended installation methods shall be followed.

**BILL OF MATERIAL**

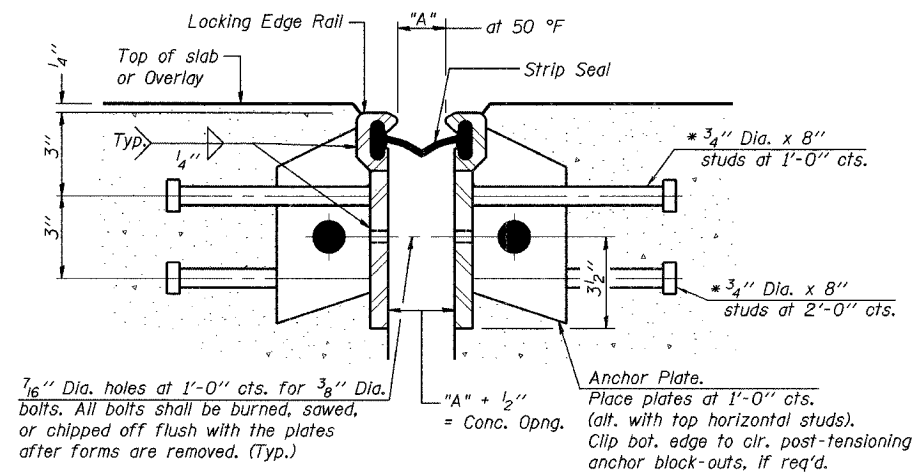
Item	Unit	Total
Strip Seal Expansion Joint (Special)	Foot	159



**SECTION THRU ROLLED RAIL EXP. JOINT**

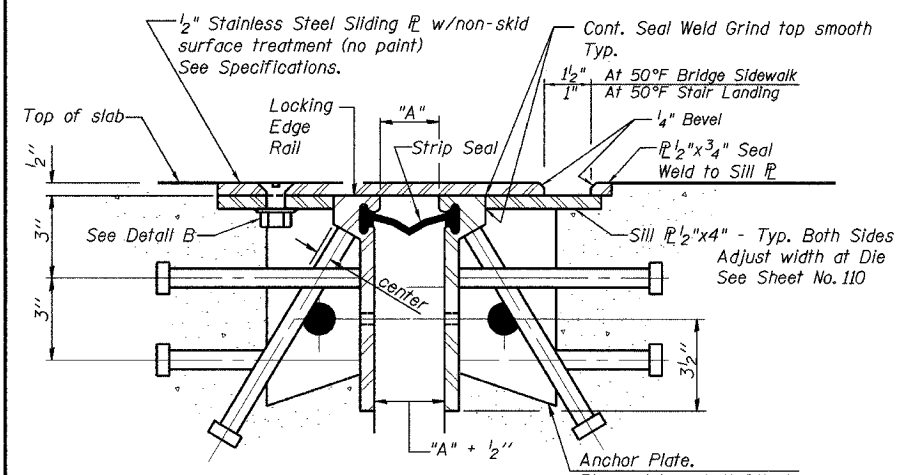
(600 Studs Required)

\* Granular or solid flux filled headed studs conforming to Article 1006.32 of the Std. Specs., automatically end welded.



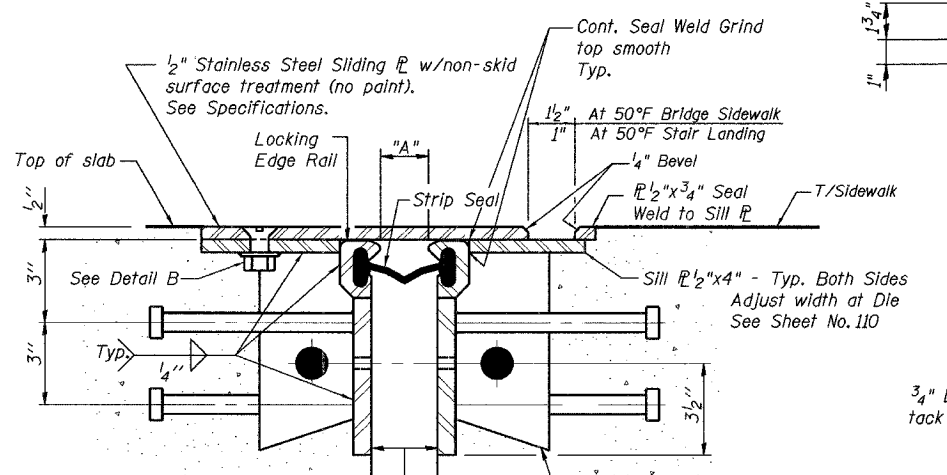
**SECTION THRU WELDED RAIL EXP. JOINT**

(360 Studs Required)  
(240 Anchor Plates Required)



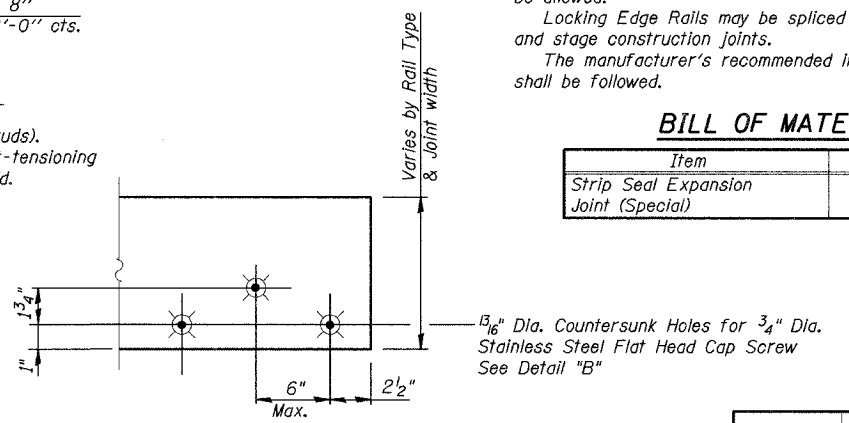
**SECTION THRU ROLLED RAIL EXP. JOINT W/COVER PLATE**

(272 Studs Required)  
(108 Anchor Plates Required)

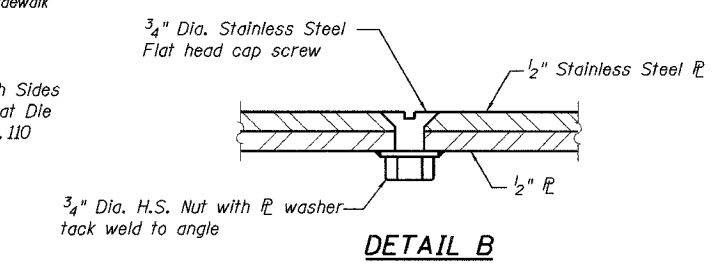


**SECTION THRU WELDED RAIL EXP. JOINT W/COVER PLATE**

(164 Studs Required)  
(108 Anchor Plates Required)



**DETAIL SLIDING PLATE**

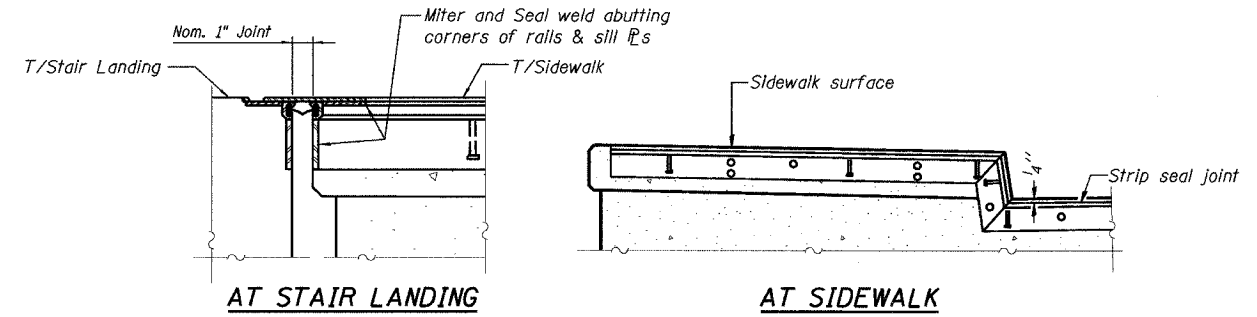


**DETAIL B**

Location	Required Strip Seal rated movement	"A"
E. Abut.	1"	2"
W. Abut.	2"	2"
Stair	Nom.	1"

"A" = 2" at 50°F (Bridge Deck)  
"A" = 1" at 50°F (Stairs)  
Note: See Section above for notes not shown.

"A" = 2" at 50°F (Bridge Deck)  
"A" = 1" at 50°F (Stairs)  
Note: See Section above for notes not shown.

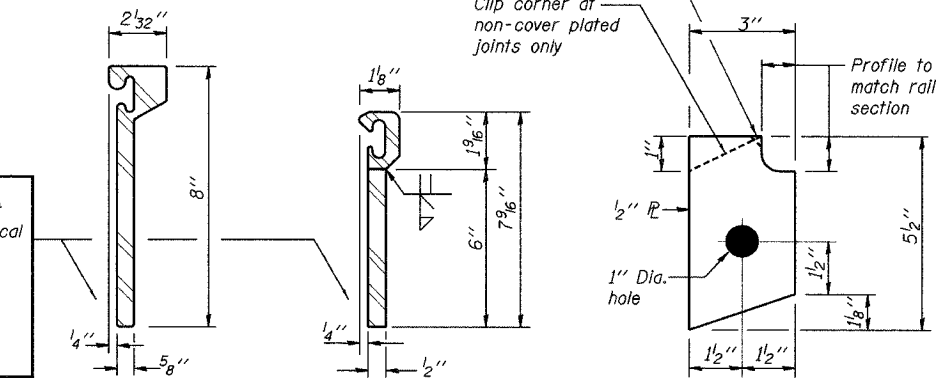


**TYPICAL END TREATMENTS**

**LOCKING EDGE RAIL SPLICE**

The inside of the locking edge rail groove shall be free of weld residue.

**ROLLED (EXTRUDED) RAIL WELDED RAIL LOCKING EDGE RAILS**



**ANCHOR PLATE**

(for welded rail or rolled rail with sidewalk cover plate see Sections)

**NOTE**

After fabrication all surfaces of the steel plates and shapes shall be given one shop coat of paint specified per Special Provision "Cleaning and Painting New Metal Structures" (except stainless steel). No field painting required.

**EXPANSION JOINT DETAILS II  
WILSON ST OVER FOX RIVER  
SECTION 00-00059-00-BR  
KANE COUNTY  
STRUCTURE NO. 045-6051**

**LOCHNER**  
H.W. LOCHNER, INC., CHICAGO, ILLINOIS

DESIGNED - GWS
CHECKED - DWH
DRAWN - EF
CHECKED - DWH

9/14/2006 10:54 PM