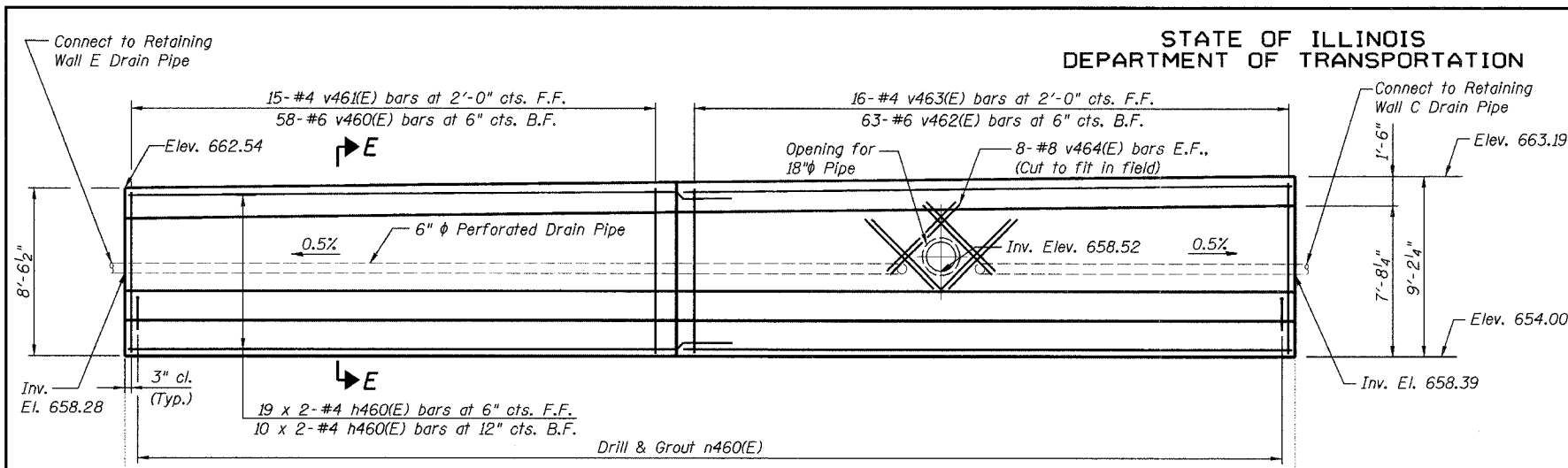


STATE OF ILLINOIS
DEPARTMENT OF TRANSPORTATION

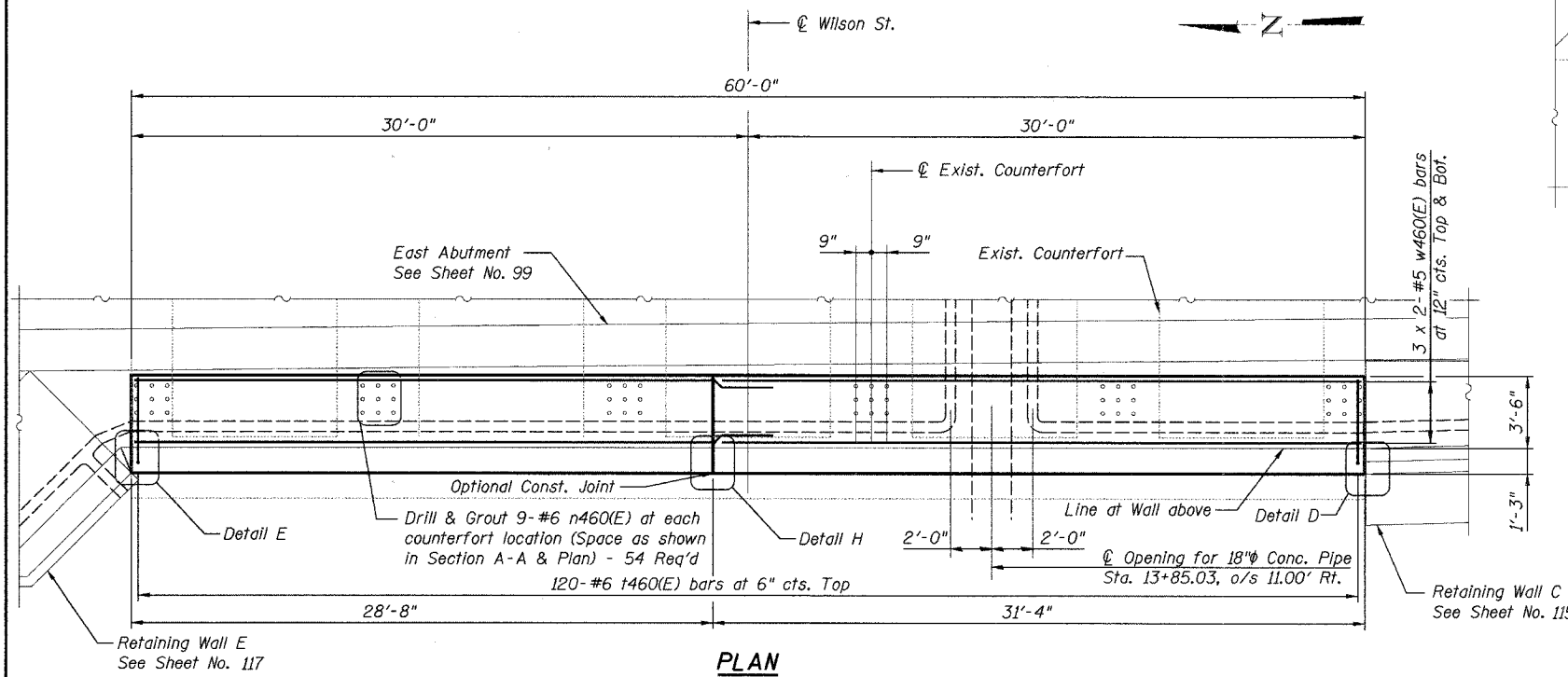
ROUTE NO.	SECTION	COUNTY	TOTAL SHEETS	SHEET NO.
FAU 1441	00-00059-00-BR	KANE	154	116
FED. ROAD DIST. NO. 7		ILLINOIS	FED. AID PROJECT	

SHEET NO. S45
of 552 SHEETS

Contract # 83869



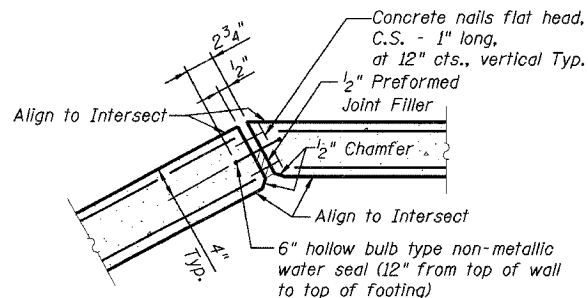
ELEVATION
(Looking East)



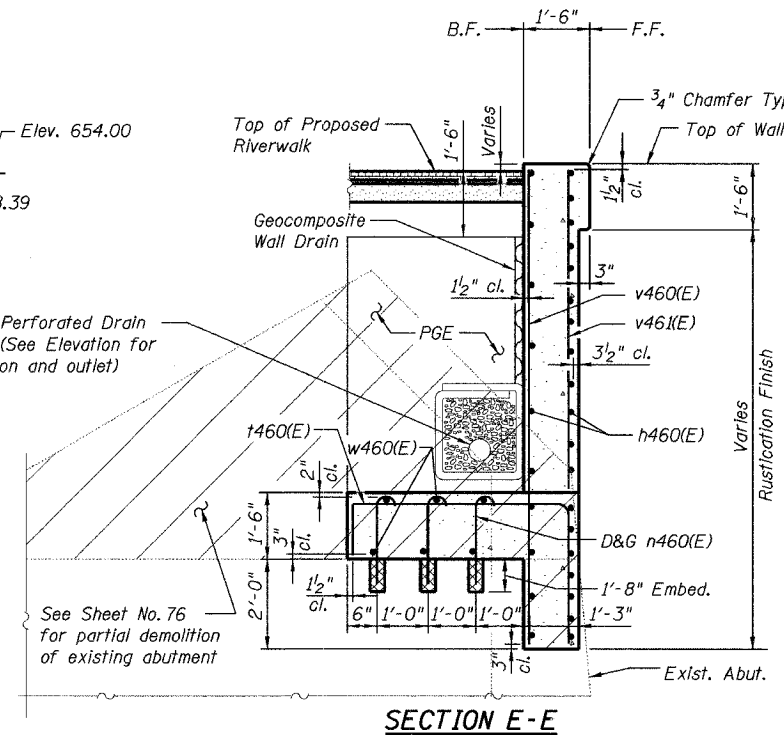
PLAN

Typ. Lap Splice	
Bar Size	Min. Lap
#4	1'-8"
#5	2'-2"
#5*	3'-0"
#6	2'-7"
#7	3'-5"
#8	4'-6"

* Top Horizontal Bar



DETAIL E



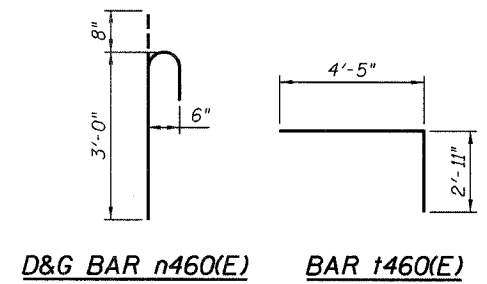
SECTION E-E

BILL OF MATERIAL

Bar	No.	Size	Length	Shape
h460(E)	58	#4	30'-7"	
t460(E)	120	#6	7'-4"	
v460(E)	58	#6	8'-2"	
v46(E)	15	#4	4'-9"	
v462(E)	63	#6	8'-6"	
v463(E)	16	#4	5'-1"	
v464(E)	16	#8	5'-4"	
w460(E)	12	#5	30'-10"	
Concrete Structures	Cu. Yd.		37.2	
Reinforcement Bars, Epoxy Coated	Pound		4740	
Porous Granular Embankment	Cu. Yd.		34	
Pipe Underdrains for Structures 6"	Foot		66	
Type I Rustication Finish (Special)	Sq. Ft.		442	
Geocomposite Wall Drain	Sq. Yd.		17	
Drill and Grout Dowel Bars	Each		54	

DOWEL SCHEDULE

Bar	No.	Size	Length	Shape
n460(E)	54	#6	3'-8"	



NOTES

- Reinforcement bars designated (E) shall be epoxy coated.
- F.F. denotes Front Face
B.F. denotes Back Face
E.F. denotes Each Face
- Cut h460(E), v460(E), and v46(E) bars to fit circular opening for 18" pipe.
- For Detail D see Sheet No. 115
- For Detail H see Sheet No. 118
- Bedrock elevations are based on available soil boring data and are approximate. It shall be the contractor's responsibility to verify the actual bedrock elevations in the field and make necessary approved adjustments prior to construction or ordering of materials. Such variations shall not be cause for additional compensation for a change in scope of work, however, the contractor will be paid for the quantity actually furnished at the unit price for the work.
- See Arch. Plans for Detail of Rustication Finish, Type 1.
- See Specifications for information regarding protection of existing buildings and structures.

RETAINING WALL D
WILSON ST OVER FOX RIVER
SECTION 00-00059-00-BR
KANE COUNTY
STRUCTURE NO. 045-6051

LOCHNER
H.W. LOCHNER, INC., CHICAGO, ILLINOIS