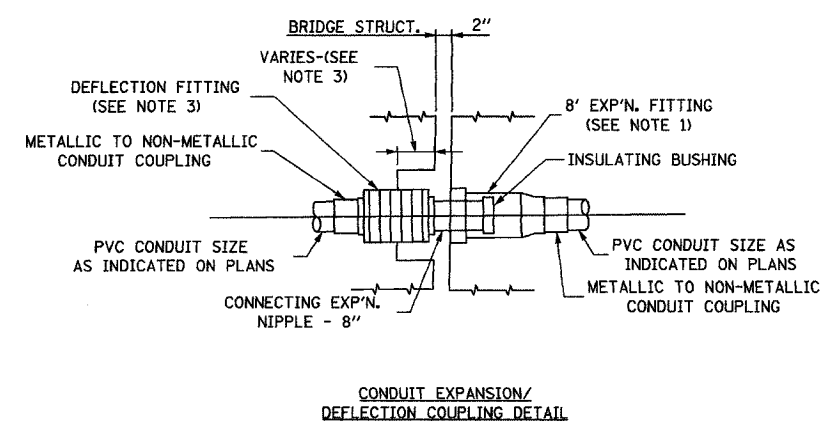
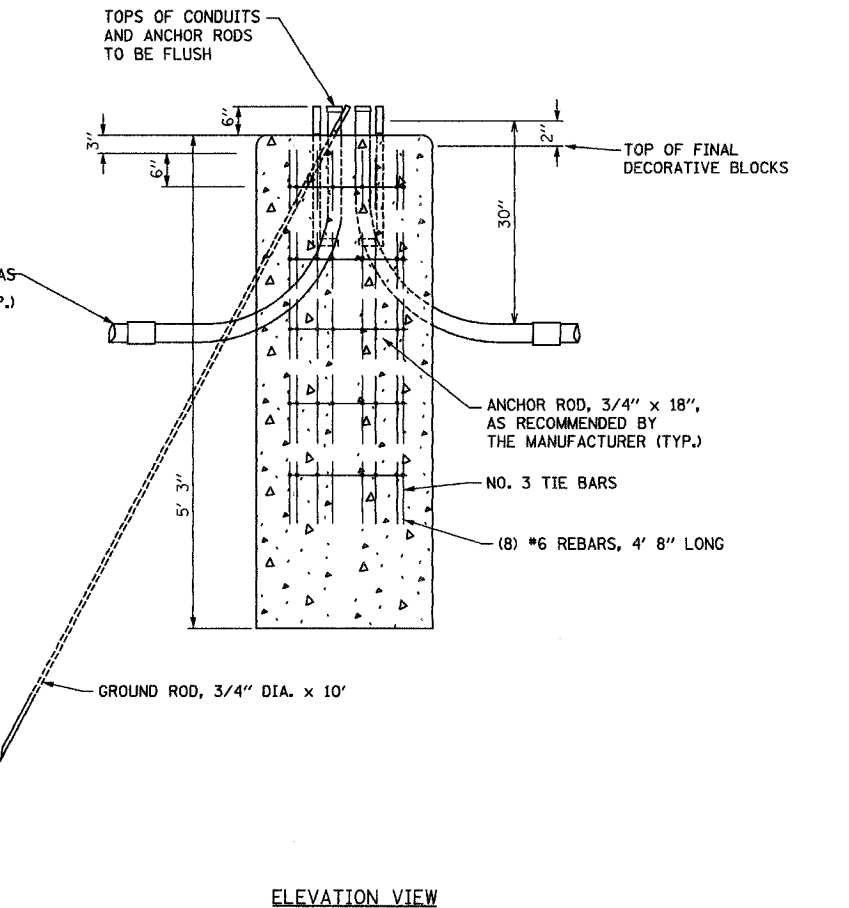
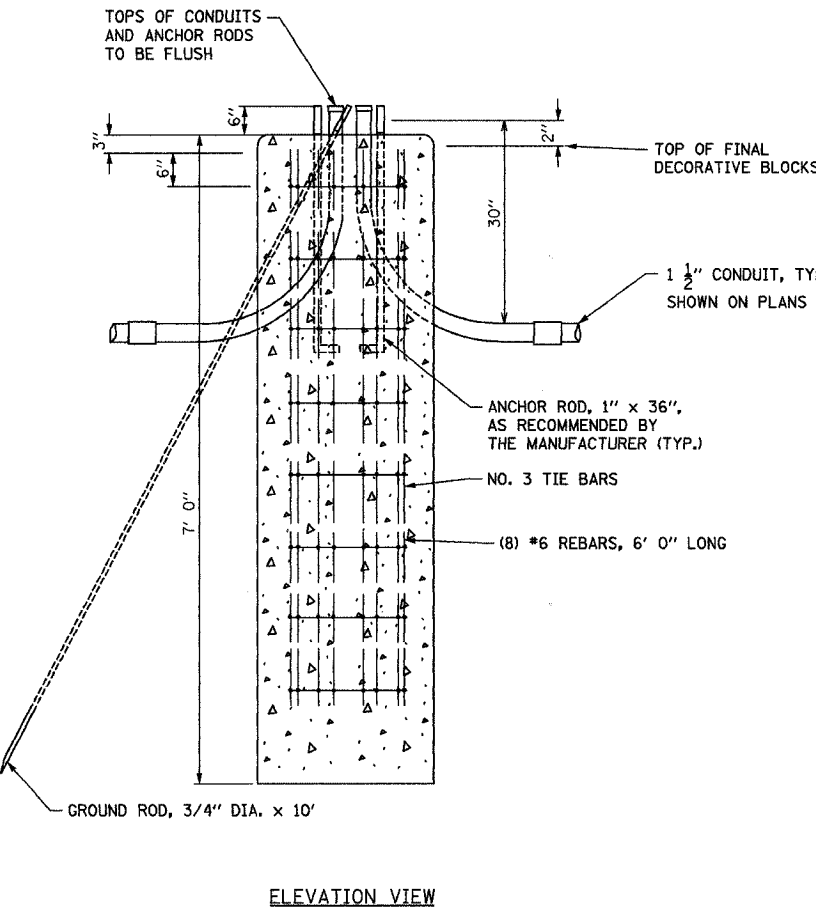
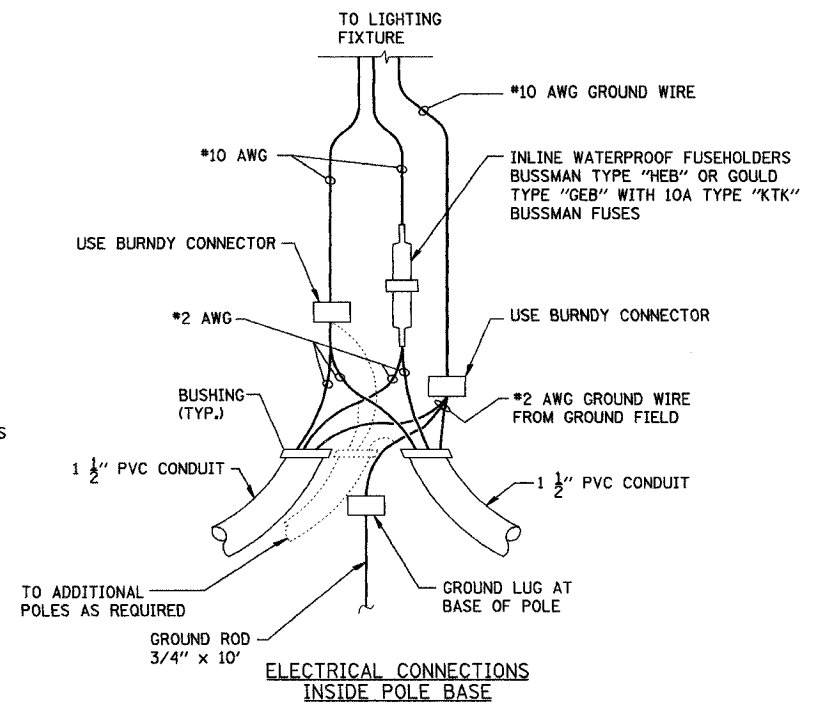
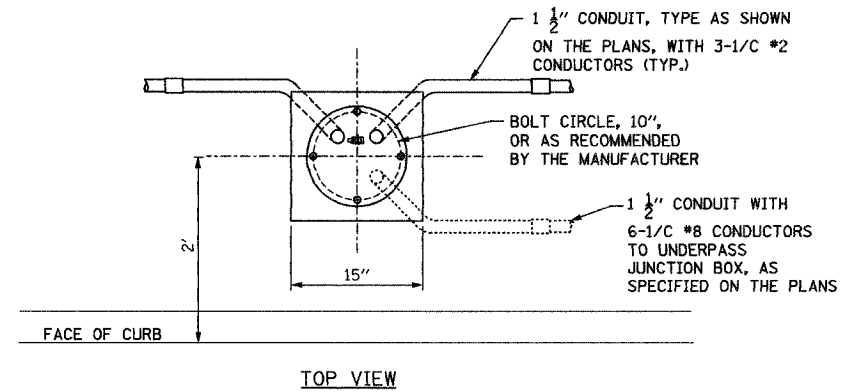
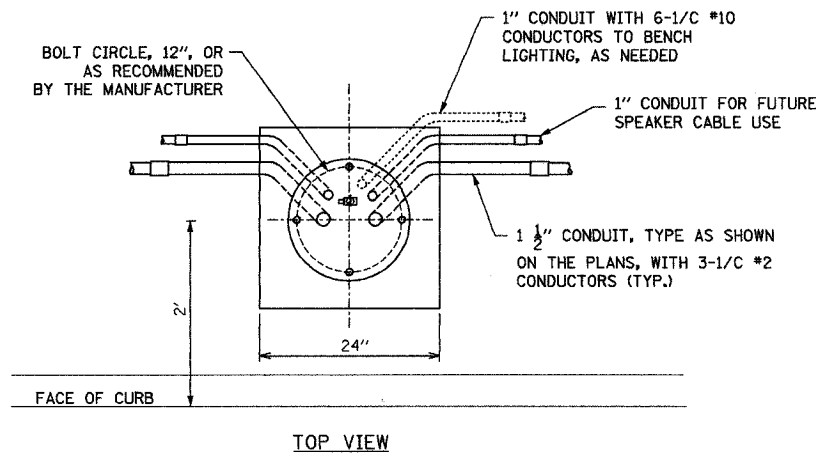


F.A. RTE.	SECTION	COUNTY	TOTAL SHEETS	SHEET NO.
1441	00-00059-00-BR	KANE	154	149
STA.	TO STA.			
FED. ROAD DIST. NO.	ILLINOIS	FED. AID PROJECT		



- NOTES:
1. THE BARREL OF THE FITTING WILL BE FULLY EMBEDDED IN THE CONCRETE OF ONE SIDE OF THE EXPANSION JOINT.
 2. CONDUIT BENDS AND RADII WILL BE IN ACCORDANCE WITH THE STANDARD SPECIFICATIONS.
 3. A CAVITY OPENING, IF REQUIRED, MUST BE A 3" LARGER DIAMETER THAN THE DEFLECTION SLEEVE DIAMETER AND A MAXIMUM DEPTH OF HALF OF THE DEFLECTION SLEEVE LENGTH. THE DEFLECTION FITTING WILL BE CENTERED IN THE OPENING AND EMBEDDED IN THE CONCRETE ONLY UP TO THE DEFLECTION FITTING CENTER.
 4. EXPANSION / DEFLECTION COUPLING SHALL ACCOMODATE AND EXPANSION RANGE OF 10.4"

ROADWAY LIGHT POLE FOUNDATION DETAIL

PEDESTRIAN LIGHT POLE FOUNDATION DETAIL

NOTE: FOUNDATIONS ARE FOR GROUND MOUNTED POLES. SEE ARCHITECTURAL PLANS FOR FOUNDATIONS FOR POLES MOUNTED ON THE BRIDGE OR RETAINING WALL.

EJM ENGINEERING, INC.
411 South Wells Street Suite 800
Chicago, Illinois 60607

ILLINOIS DEPARTMENT OF TRANSPORTATION
WILSON STREET
FOUNDATION AND CONDUIT DETAILS

REVISIONS	
NAME	DATE

SCALE: 1"=20'
DATE: 07/28/06
DRAWN BY: JDM
CHECKED BY: RS

PLOT DATE = #DATE#
FILE NAME = #FILE#
PLOT SCALE = #SCALE#
USER NAME = #USER#