

F.A.U. RTE.	SECTION	COUNTY	TOTAL SHEETS	SHEET NO.
	05-00032-00-LT	COOK	8	5
CONTRACT NO.			83870	
FED. ROAD DIST. NO.	ILLINOIS FED. AID PROJECT			

ITEM	SPECIFICATION	MANUFACTURER/MODEL NO. OR EQUAL
1 MAIN CIRCUIT BREAKER	100 AMPERE, 2 P., 240 V RATING, 22K AIC	SIEMENS NO. ED42B100
2 LAMPHOLDER CIRCUIT BREAKER	20 AMPERE, 1 P., 120 V RATING, 22K AIC	SIEMENS NO. ED41B020
3 PHOTOELECTRIC CONTROL CIRCUIT BREAKER	15 AMPERE, 1 P., 120 V RATING, 22K AIC	SIEMENS NO. ED41B015
4 AUXILIARY RELAY	120 V OPERATED SPST 60 HZ COIL 600V NORMALLY OPEN CONTACTS	MAGNECRAFT NO. W389ACX-9
5 CABINET RECEPTACLE AND BOX	COMMERCIAL GRADE GFCI 20A/120V, MOUNTED IN A WEATHERPROOF CAST ALUMINUM SINGLE GANG BOX WITH WEATHERPROOF COVER	RECEPTACLE: LEVITON NO. 8899, BOX: APPLETON NO. WSM150 COVER: APPLETON NO. WHG1
6 CABINET LIGHT AND BOX	120V WEATHERPROOF LAMPHOLDER MOUNTED IN A CAST ALUMINUM BOX & EXT. GRADE 100W LAMP	LIGHT & BOX: RAB NO. VX100DG
7 CONTACTOR	100 AMPERE, 2 POLE, 120 V COIL, MECH HELD	SQUARE D NO. 8903 SQD 10 V02
8 BRANCH LINE CIRCUIT BREAKERS	7- 30 AMPERE, 2 P., 240 V RATING, 22K AIC	SIEMENS NO. ED42B030
9 POWER DISTRIBUTION BLOCK	600 VOLT, INSULATED, SIZE AS REQUIRED	MARATHON
10 SERVICE CABLES	3-600V (XLP-TYPE USE) NO. 2	N/A
11 LAMPHOLDER WIRE	2-600V XLP NO. 12	N/A
12 CONTROL WIRE	2-600V XLP NO. 12	N/A
13 SURGE ARRESTOR	10 K AMPERE RATING	SQUARE D NO. SDSA 1175
14 PHOTOELECTRIC CONTROL WIRE	3-600V XLP NO. 12	3-600V XLP NO. 12
15 DOOR SWITCH	20A/120V, DOOR MOUNTED SNAP ACTION TYPE PLUNGER SWITCH	OMRON NO. A-20GQ-K
16 HAND-AUTO-OFF CONTROL SWITCH	20 A, 3 POS. MTD IN CAST ALUM. ENCLOSURE	SQUARE D NO. 9001 KYK 111
17 PHOTOCCELL	120V, MTD. ON CABINET, DELAY TYPE, SPST-NC	FISHER PIERCE NO. FFFA-105

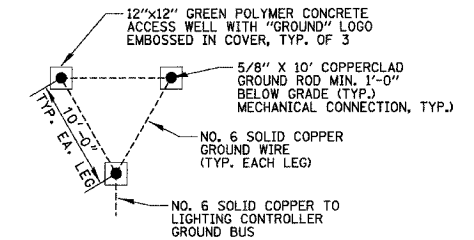
NOTES:

- ALL ITEMS LISTED IN LIGHTING CONTROLLER #1 COMPONENT SCHEDULE SHALL BE CONSIDERED INCIDENTAL TO THE PRICE BID FOR "STREET LIGHTING CONTROLLER" INCLUDING CABINET AND FOUNDATION.
- THE LIGHTING CONTROLLER TOGETHER WITH ALL OF ITS COMPONENTS SHALL BE LISTED AS AN "ENCLOSED INDUSTRIAL CONTROL PANEL" UNDER UL508A.

LIGHTING CONTROLLER #1 COMPONENT SCHEDULE

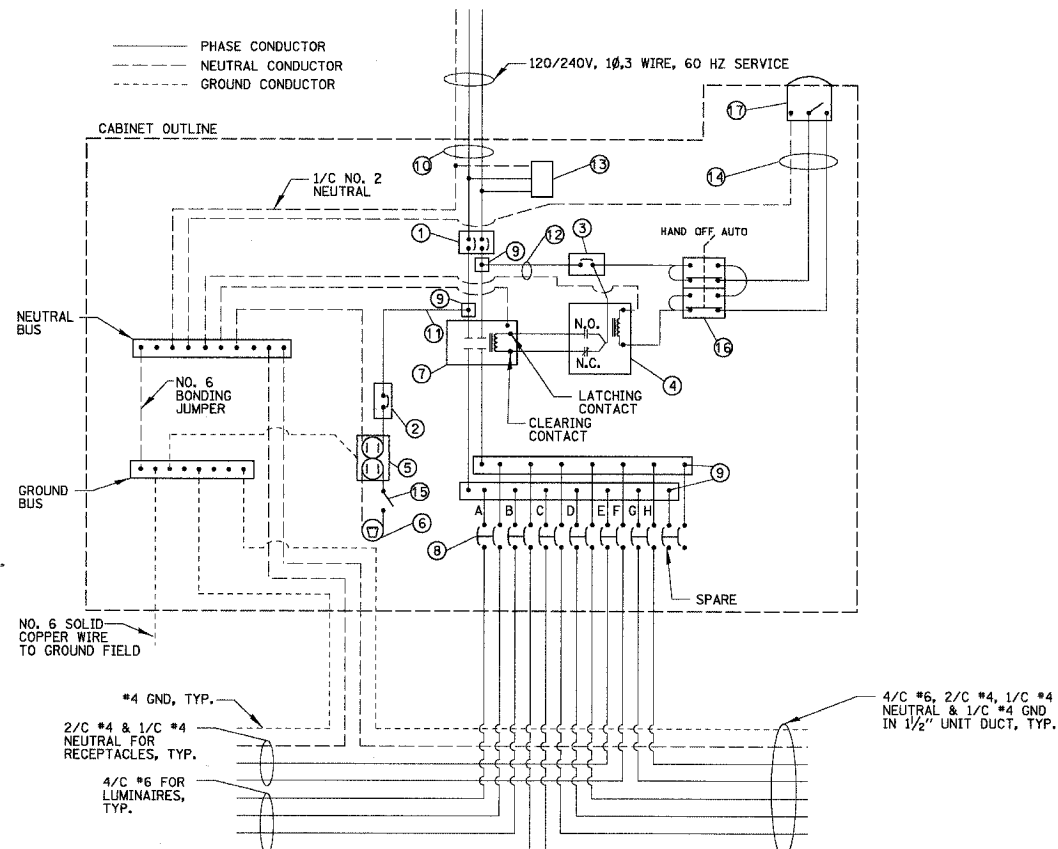
CIRCUIT ID	250W LUMINAIRE		POLE MOUNTED RECEPTACLE		TOTAL CIRCUIT LOAD (WATTS)
	QUANTITY	LOAD/POLE (WATTS)	QUANTITY	LOAD/POLE (WATTS)	
A	7	304W	-	180W	2128 W
B	6	304W	-	180W	1824 W
C	5	304W	-	180W	1520 W
D	5	304W	-	180W	1520 W
E	-	304W	7	180W	1260 W
F	-	304W	6	180W	1080 W
G	-	304W	5	180W	900 W
H	-	304W	5	180W	900 W
TOTAL	23	N/A	23	N/A	11.1 KW

**LIGHTING CONTROLLER #1
CIRCUIT WATTAGE LOADS**



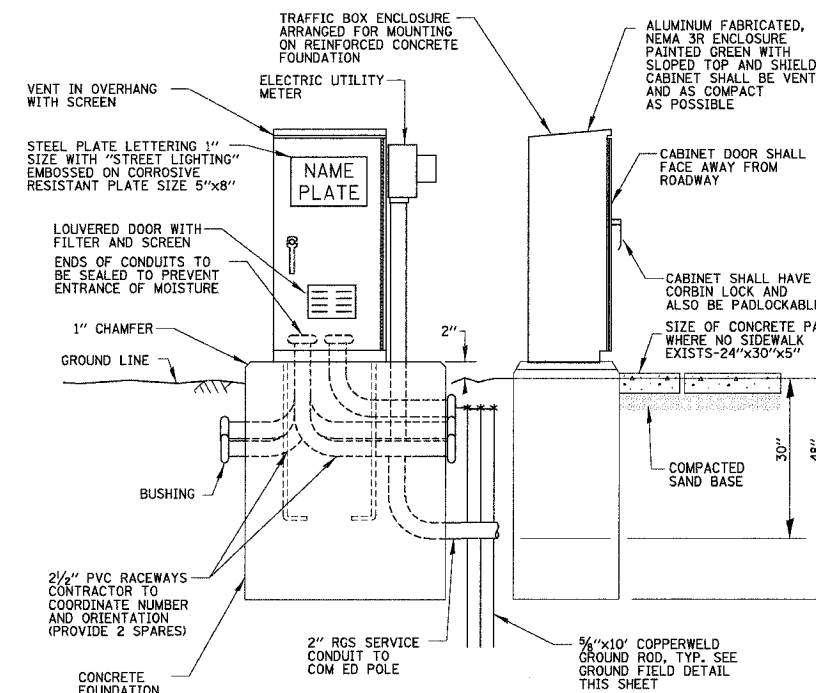
GROUND FIELD DETAIL (TYP.)

N.T.S.



LIGHTING CONTROLLER #1 WIRING DETAIL

N.T.S.



NOTE:
ALL ITEMS SHOWN ABOVE INCLUDING FOUNDATION SHALL BE INCLUDED IN THE PRICE BID FOR "STREET LIGHTING CONTROLLER", EXCEPT FOR THE SERVICE CONDUIT AND GROUND RODS WHICH WILL BE PAID FOR SEPARATELY.

**PROPOSED LIGHTING CONTROLLER #1
CABINET AND FOUNDATION**

N.T.S.

REVISIONS	
NAME	DATE

ILLINOIS DEPARTMENT OF TRANSPORTATION
**88TH AVENUE
ROADWAY LIGHTING DETAILS-1**

SCALE: NO SCALE

DRAWN BY AJD
DESIGN BY AJD
CHECKED BY JPC

DATE: 8/22/2006