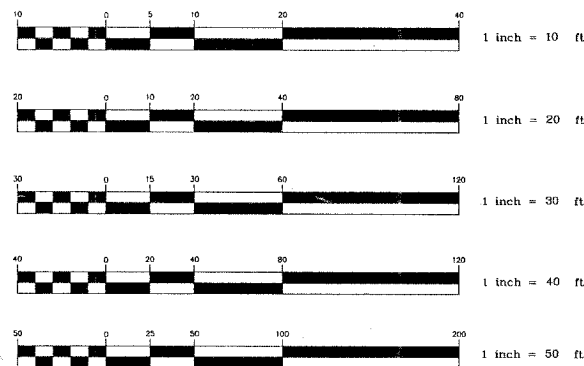


INDEX TO SHEETS:

SHEET NO.	DESCRIPTION
1.	COVER SHEET
2.	GENERAL NOTES - SUMMARY OF QUANTITIES
3.	TYPICAL SECTIONS
4-9.	PLAN SHEETS
10.	TRAFFIC CONTROL AND PROTECTION FOR SIDE ROADS
11.	CURB OR CURB AND GUTTER R&R

LIST OF STATE STANDARDS:

STANDARD NO.	DESCRIPTION
000001-04:	STANDARD SYMBOLS, ABBREVIATIONS AND PATTERNS
424001-04:	CURB RAMPS FOR SIDEWALKS
606001-02:	CONCRETE CURB TYPE B AND COMBINATION CONCRETE CURB AND GUTTER
701606-04:	URBAN LANE CLOSURE, MULTILANE 2W WITH MOUNTABLE MEDIAN
701801-03:	LANE CLOSURE MULTILANE 1W OR 2W OR SIDEWALK CLOSURE
702001-06:	TRAFFIC CONTROL DEVICES



FULL SIZE PLANS HAVE BEEN PREPARED USING STANDARD ENGINEERING SCALES. REDUCED SIZED PLANS WILL NOT CONFORM TO STANDARD SCALES. IN MAKING MEASUREMENTS ON REDUCED PLANS, THE ABOVE SCALES MAY BE USED.

J.U.L.I.E.
JOINT UTILITY LOCATION FOR EXCAVATION
1-800-892-0123

CONTRACT NO. 83874

STATE OF ILLINOIS

DEPARTMENT OF TRANSPORTATION

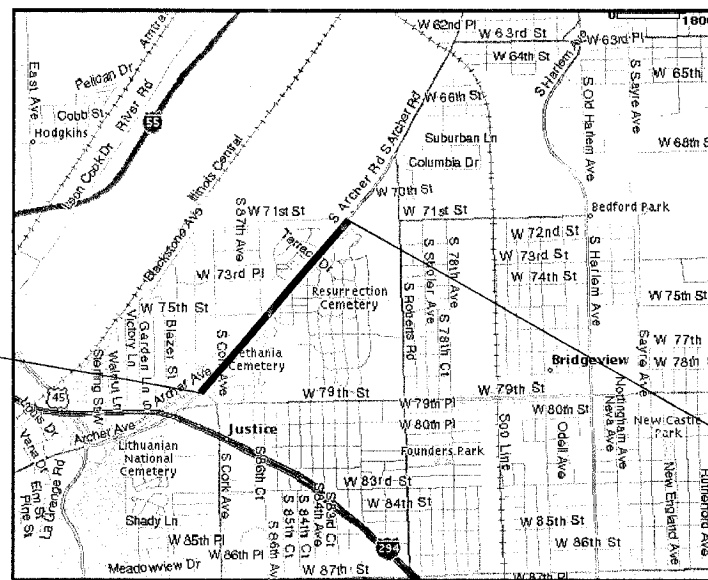
DIVISION OF HIGHWAYS

**PLANS FOR PROPOSED
FEDERAL AID HIGHWAY**

**FAU RTE. 3565 (ARCHER AVENUE - IL ROUTE 171)
SIDEWALK CONSTRUCTION,
OAK GROVE ROAD TO 71ST STREET
SECTION NO. 02-00026-00-SW
PROJECT NO: CMM-8003(351)
JOB NO: C-91-080-04
VILLAGE OF JUSTICE, COOK COUNTY**



PROJECT BEGINS
AT STA. 12+21



LOCATION MAP

TRAFFIC DATA
ADT = 17,900
SPEED LIMIT = 45

PROJECT ENDS
AT STA. 76+38

FAU RTE.	SECTION	COUNTY	TOTAL SHEETS	SHEET NO.
3565	02-00026-00-SW	COOK	11	1
STA. 12+21		TO STA. 76+38		
FED. ROAD DIST. NO. ILLINOIS		FED. AID PROJECT		
CONTRACT NO. 83874				



LOCATION OF SECTION INDICATED AS [black box]

STATE OF ILLINOIS
DEPARTMENT OF TRANSPORTATION
DIVISION OF HIGHWAYS

APPROVED 7/28 /2006
[Signature]
VILLAGE OF JUSTICE, PRESIDENT

PASSED AUGUST 15 /2006
[Signature]
DISTRICT 1 ENGINEER OF LOCAL ROADS & STREETS

RELEASING FOR BID
BASED ON LIMITED
REVIEW Aug. 16 /2006
[Signature]
DEPUTY DIRECTOR OF HIGHWAYS/REGION 1 ENGINEER

hbe Hoeffler-Butler Engineering, Inc.
Consulting Civil Engineers - Land Surveyors
PROFESSIONAL DESIGN FIRM LICENSE NO. 184-L-0819
874 S. ROBERTS ROAD HICKORY HILLS, ILLINOIS 60437
(708) 599-8980 FAX (708) 599-8793

STEPHEN A. LEVINE
Professional Engineer
No. 38359
Professional Seal
[Signature]
7/27/06
Expires 11/30/07

GROSS LENGTH OF PROJECT 6417 FEET (1.22 MILES)
NET LENGTH OF PROJECT 6417 FEET (1.22 MILES)

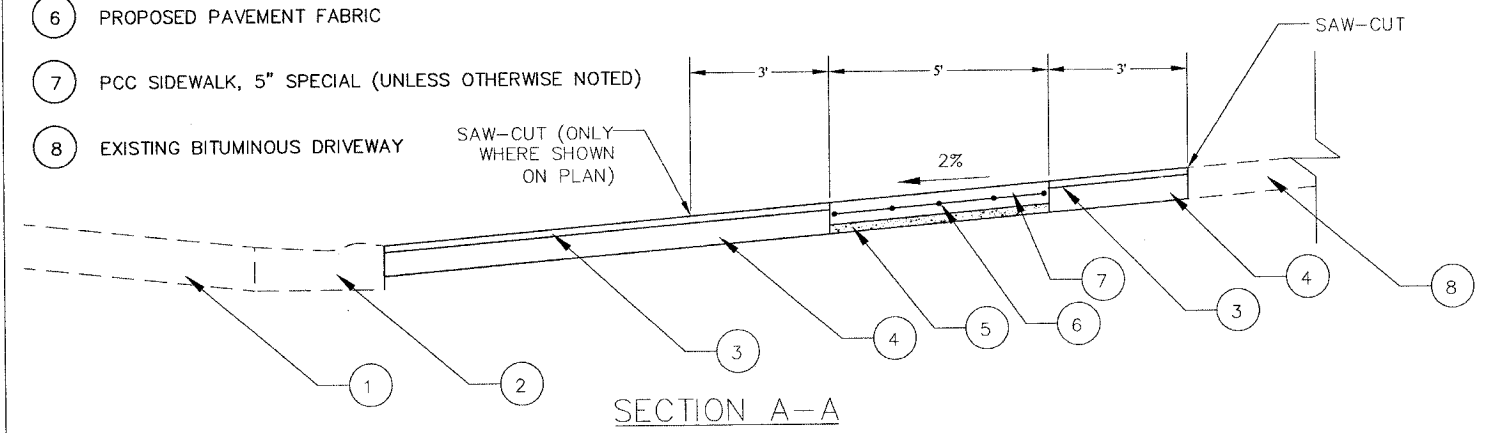
(PRINTED BY AUTHORITY OF THE STATE OF ILLINOIS)

FEDERAL-AID DESIGN ENGINEER: KEVIN STALLWORTH 1-847-705-4189
CONSULTANT: HOEFFLER BUTLER ENGINEERING, INC. 1-708-599-8980

HBE JOB# 05-719

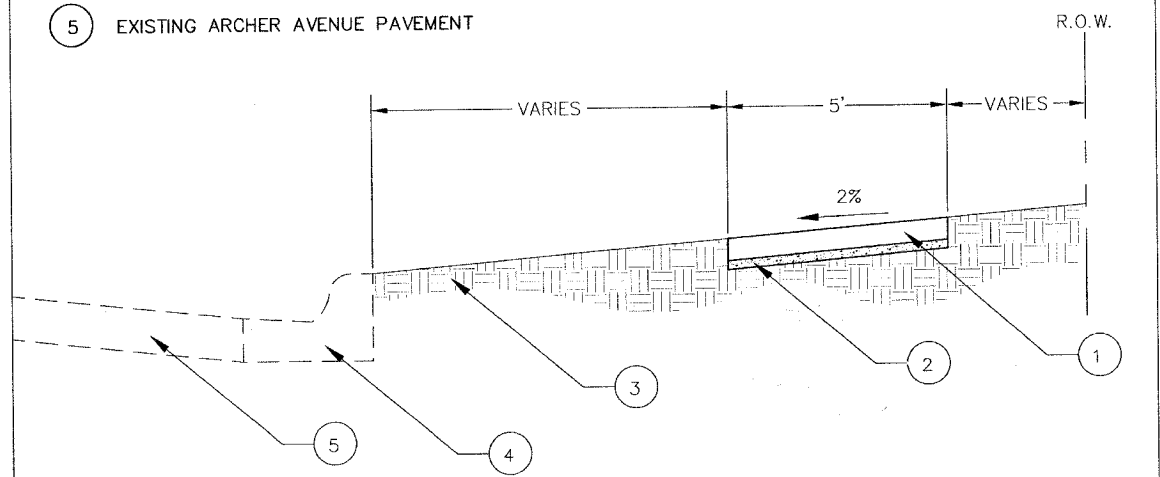
FAU RTE.	SECTION	COUNTY	TOTAL SHEETS	SHEET NO.
3565	02-00026-00-SW	COOK	11	3
STA.		TO STA.		
FED. ROAD DIST. NO.		ILLINOIS	FED. AID PROJECT	
CONTRACT NO. 83874				

- 1 EXISTING ARCHER AVENUE PAVEMENT
- 2 EXISTING CURB AND GUTTER(DEPRESSED)
- 3 PROPOSED BITUMINOUS DRIVEWAY PAVEMENT, SUPERPAVE (MIX "C", N50)
- 4 PROPOSED AGGREGATE BASE COURSE, TYPE B, 8"
- 5 PROPOSED AGGREGATE BASE COURSE, TYPE B, 2"
- 6 PROPOSED PAVEMENT FABRIC
- 7 PCC SIDEWALK, 5" SPECIAL (UNLESS OTHERWISE NOTED)
- 8 EXISTING BITUMINOUS DRIVEWAY

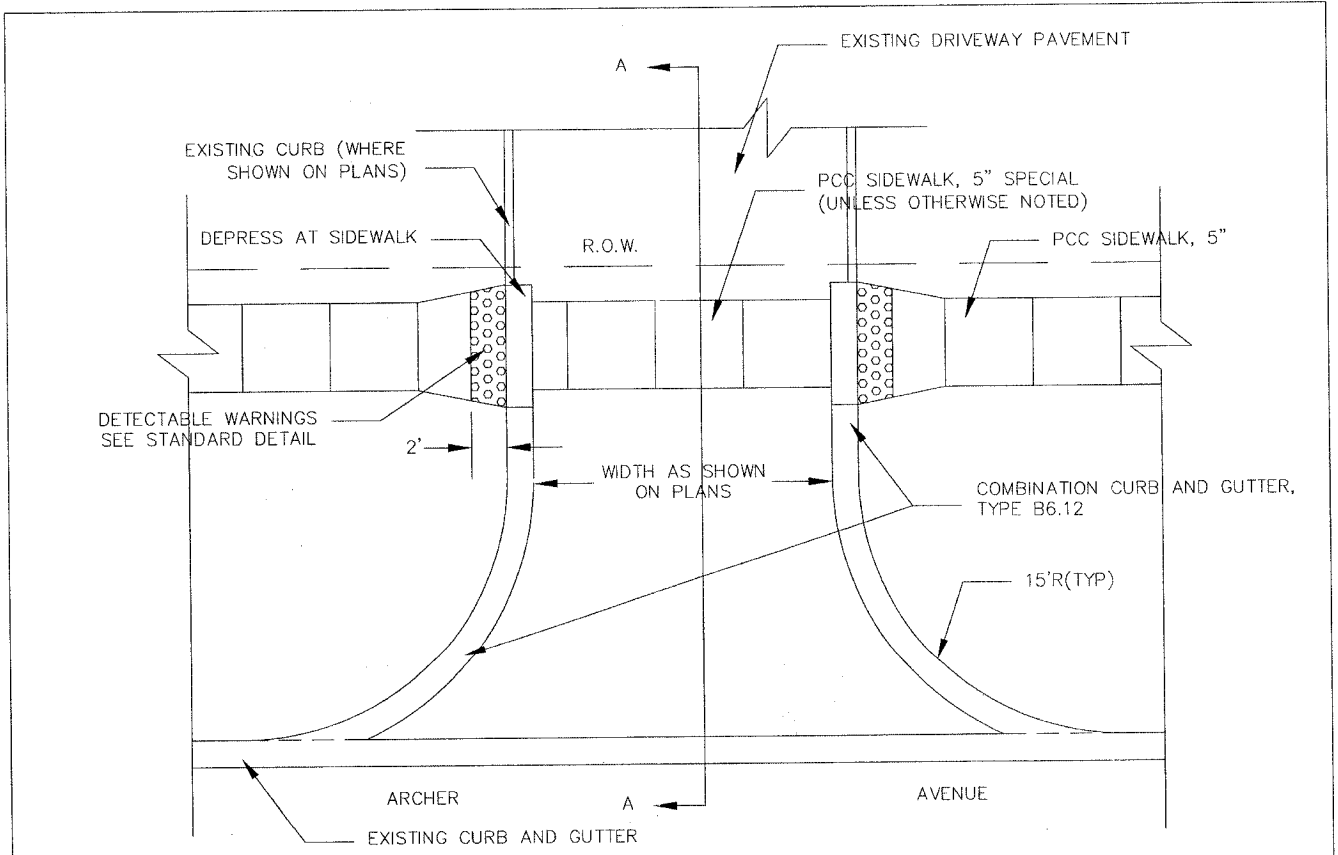


SECTION A-A
TYPICAL CROSS SECTION
AT BITUMINOUS DRIVEWAYS

- 1 PROPOSED P.C.C. SIDEWALK, 5"
- 2 PROPOSED AGGREGATE BASE COURSE, TYPE B, 2"
- 3 EXISTING GROUND
- 4 EXISTING CURB AND GUTTER
- 5 EXISTING ARCHER AVENUE PAVEMENT



TYPICAL CROSS SECTION



BITUMINOUS DRIVEWAY DETAIL

ITEM	AC TYPE	VOIDS	RAP%
BITUMINOUS CONCRETE SURFACE COURSE SUPERPAVE, MIX C, N50	PG 64-22	4% AT 50 GYR	15%
CLASS D PATCHES	PG 64-22	4% AT 50 GYR	15%

THE UNIT WEIGHT FOR BITUMINOUS MIXTURES IS 112 LBS/S.Y./IN.

(hbe) Hoeffler-Butler Engineering, Inc.
 Consulting Civil Engineers - Land Surveyors
 PROFESSIONAL DESIGN FIRM LICENSE NO. 094-000819
 8714 S. ROBERTS ROAD - HICKORY HILLS, ILLINOIS 60457
 (708) 359-8900 FAX (708) 359-8790

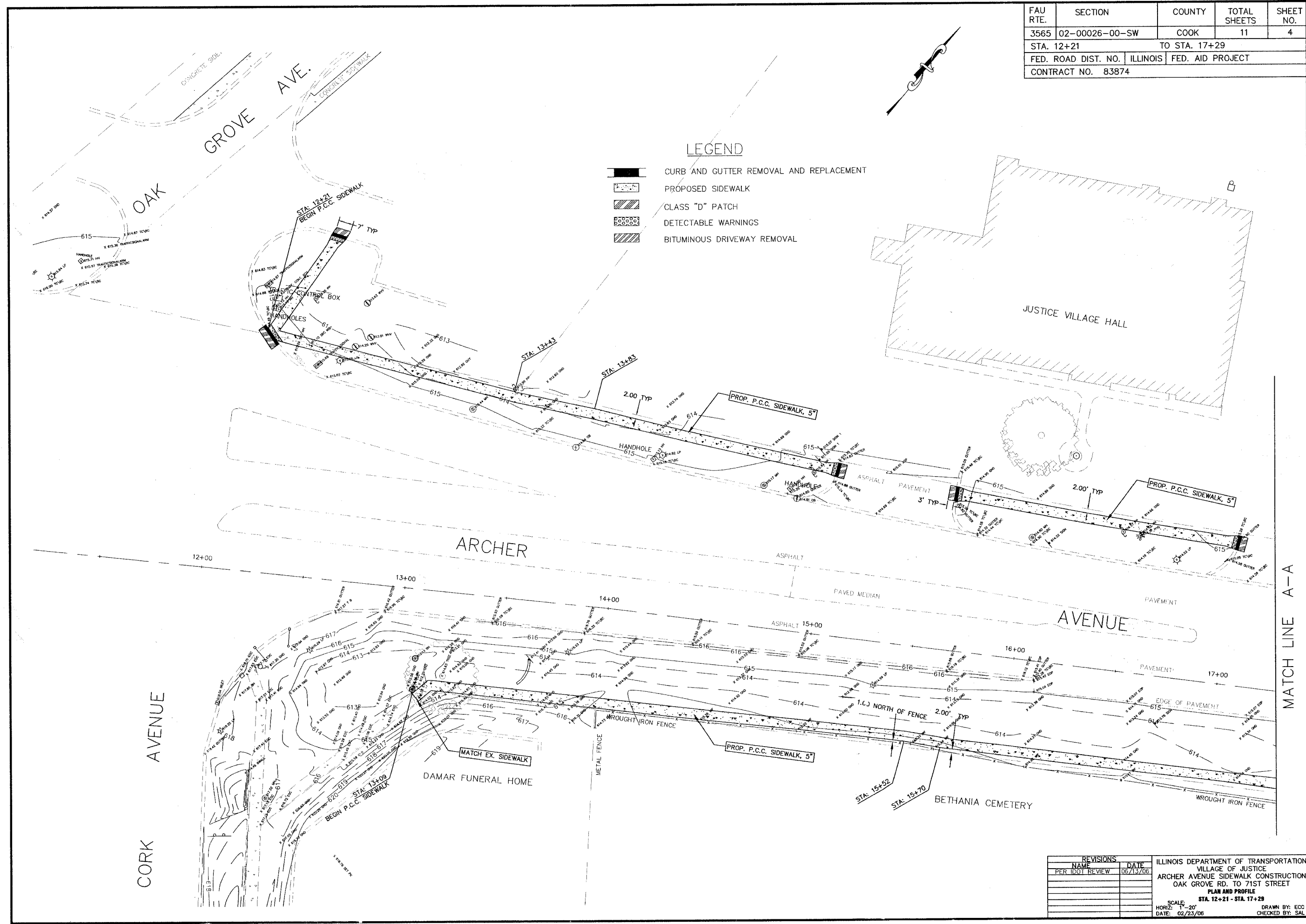
REVISIONS		DATE
NAME	PER IDOT REVIEW	
		06/13/06

ILLINOIS DEPARTMENT OF TRANSPORTATION
 VILLAGE OF JUSTICE
 ARCHER AVENUE SIDEWALK CONSTRUCTION
 OAK GROVE RD. TO 71ST STREET
 TYPICAL CROSS SECTIONS
 AND DRIVEWAY DETAIL

SCALE: 1" = 20'
 HORIZ. DATE: 02/23/06
 DRAWN BY: ECC
 CHECKED BY: SAL

HBE JOB#03-719

FAU RTE.	SECTION	COUNTY	TOTAL SHEETS	SHEET NO.
3565	02-00026-00-SW	COOK	11	4
STA. 12+21		TO STA. 17+29		
FED. ROAD DIST. NO.		ILLINOIS	FED. AID PROJECT	
CONTRACT NO.		83874		



LEGEND

- CURB AND GUTTER REMOVAL AND REPLACEMENT
- PROPOSED SIDEWALK
- CLASS "D" PATCH
- DETECTABLE WARNINGS
- BITUMINOUS DRIVEWAY REMOVAL

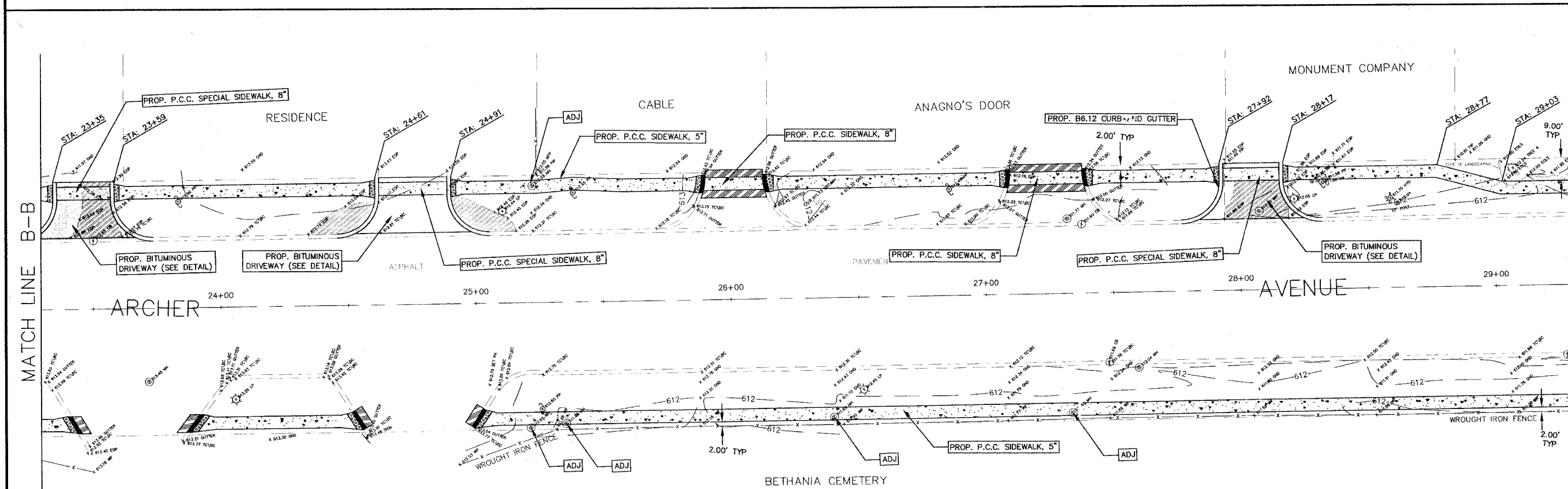
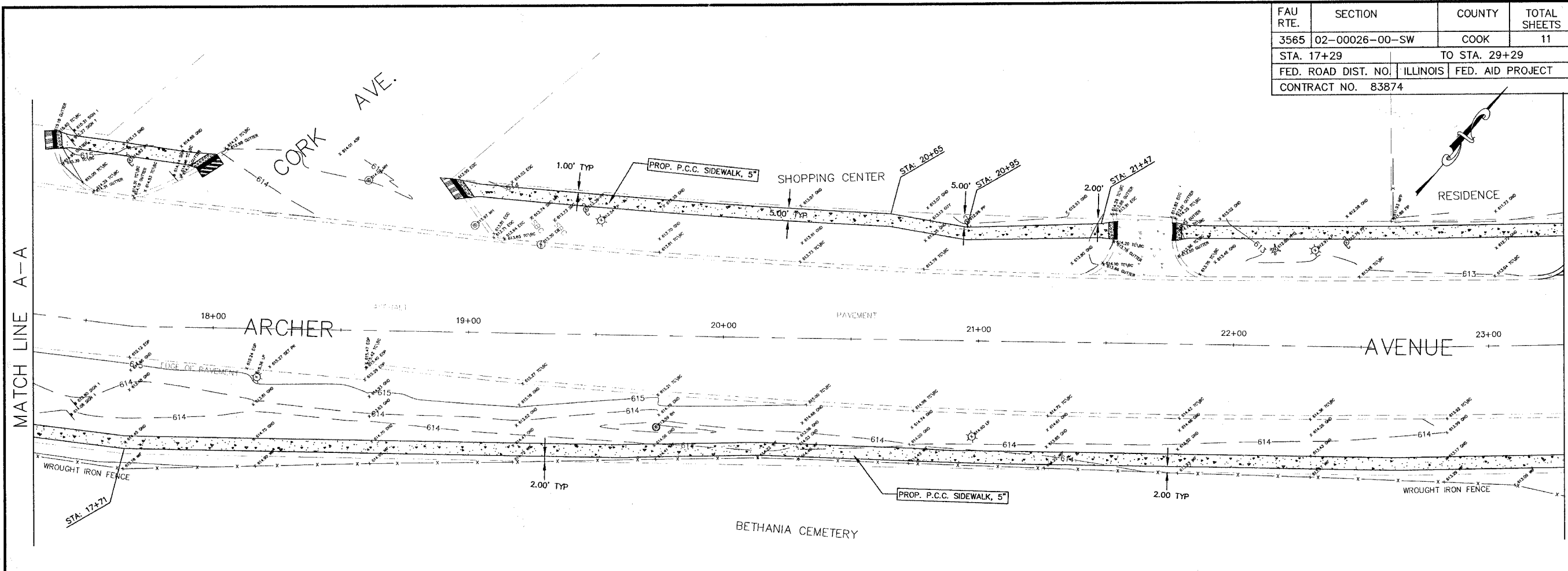
hbe **Hoefler-Butler Engineering, Inc.**
 Consulting Civil Engineers - Land Surveyors
 PROFESSIONAL DESIGN FIRM LICENSE NO. 044-00087
 8714 S. ROBERTS ROAD, HOOVER, ILLINOIS 60457
 (708) 599-5998 FAX (708) 599-8776

MATCH LINE A-A

REVISIONS		ILLINOIS DEPARTMENT OF TRANSPORTATION VILLAGE OF JUSTICE ARCHER AVENUE SIDEWALK CONSTRUCTION OAK GROVE RD. TO 71ST STREET PLAN AND PROFILE STA. 12+21 - STA. 17+29
NAME	DATE	
PER IDOT REVIEW	06/13/06	SCALE: 1" = 20' HORIZ: 1" = 20' DATE: 02/25/06 DRAWN BY: ECC CHECKED BY: SAL

HBE JOB# 03-719

FAU RTE.	SECTION	COUNTY	TOTAL SHEETS	SHEET NO.
3565	02-00026-00-SW	COOK	11	5
STA. 17+29		TO STA. 29+29		
FED. ROAD DIST. NO.	ILLINOIS	FED. AID PROJECT		
CONTRACT NO. 83874				



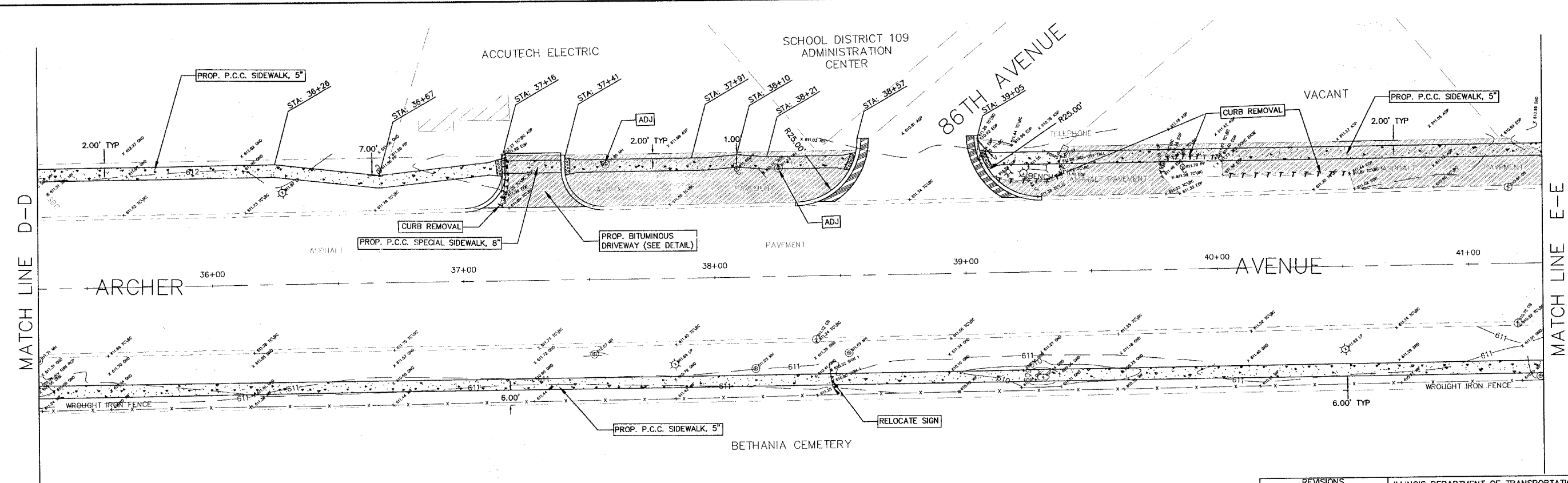
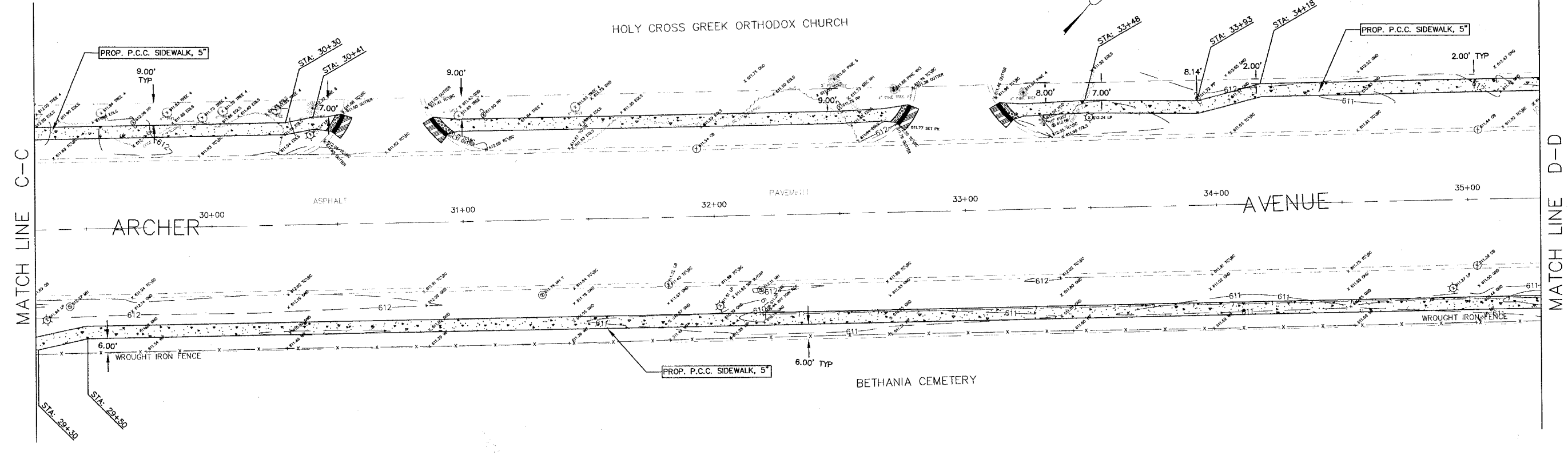
hbe **Hoeflerle-Butler Engineering, Inc.**
 Consulting Civil Engineers - Land Surveyors
 PROFESSIONAL DESIGN FIRM LICENSE NO. 084-00089
 874 S. ROBERTS ROAD - HICKORY HILLS, ILLINOIS 60437
 (708) 599-9900 FAX (708) 599-9796

REVISIONS		DATE
NAME	PER	
PER IDOT REVIEW		06/13/06

ILLINOIS DEPARTMENT OF TRANSPORTATION
 VILLAGE OF JUSTICE
 ARCHER AVENUE SIDEWALK CONSTRUCTION
 OAK GROVE RD. TO 71ST STREET
PLAN AND PROFILE
 STA. 17+29 - 29+29
 SCALE:
 HORIZ: 1"=20'
 DATE: 02/23/06
 DRAWN BY: ECC
 CHECKED BY: SAL

HBE JOB#03-719

FAU RTE.	SECTION	COUNTY	TOTAL SHEETS	SHEET NO.
3565	02-00026-00-SW	COOK	11	6
STA. 29+29		TO STA. 41+30		
FED. ROAD DIST. NO.	ILLINOIS	FED. AID PROJECT		
CONTRACT NO. 83874				

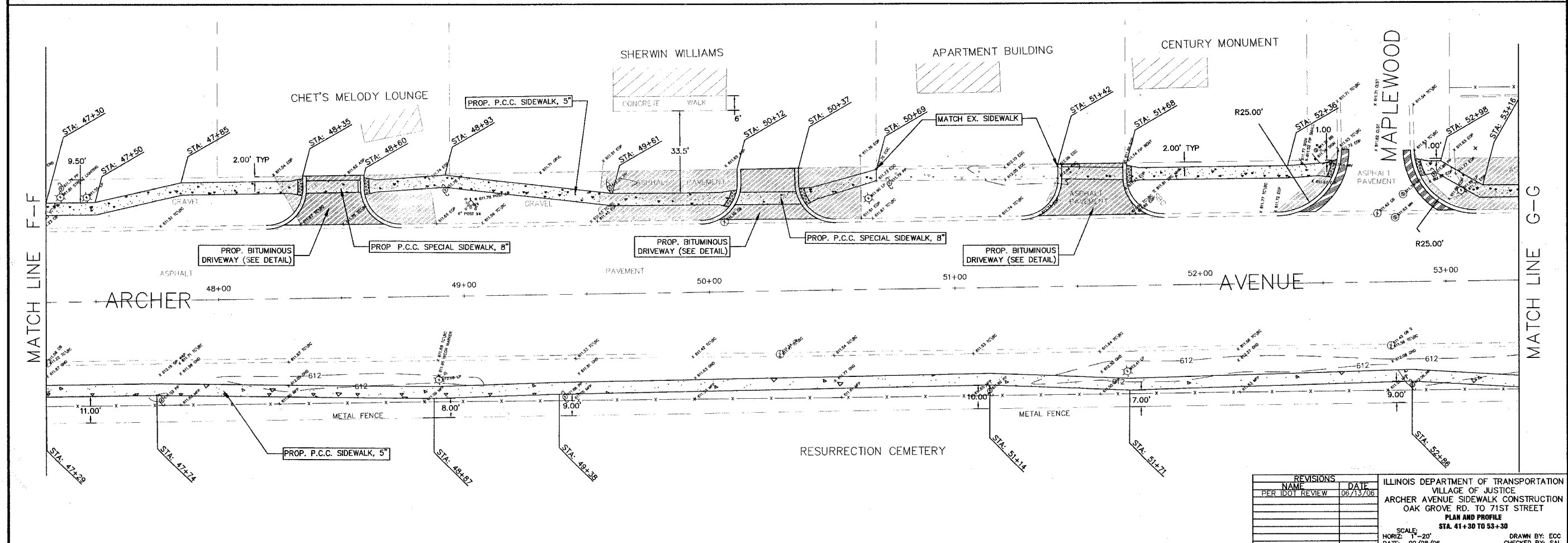
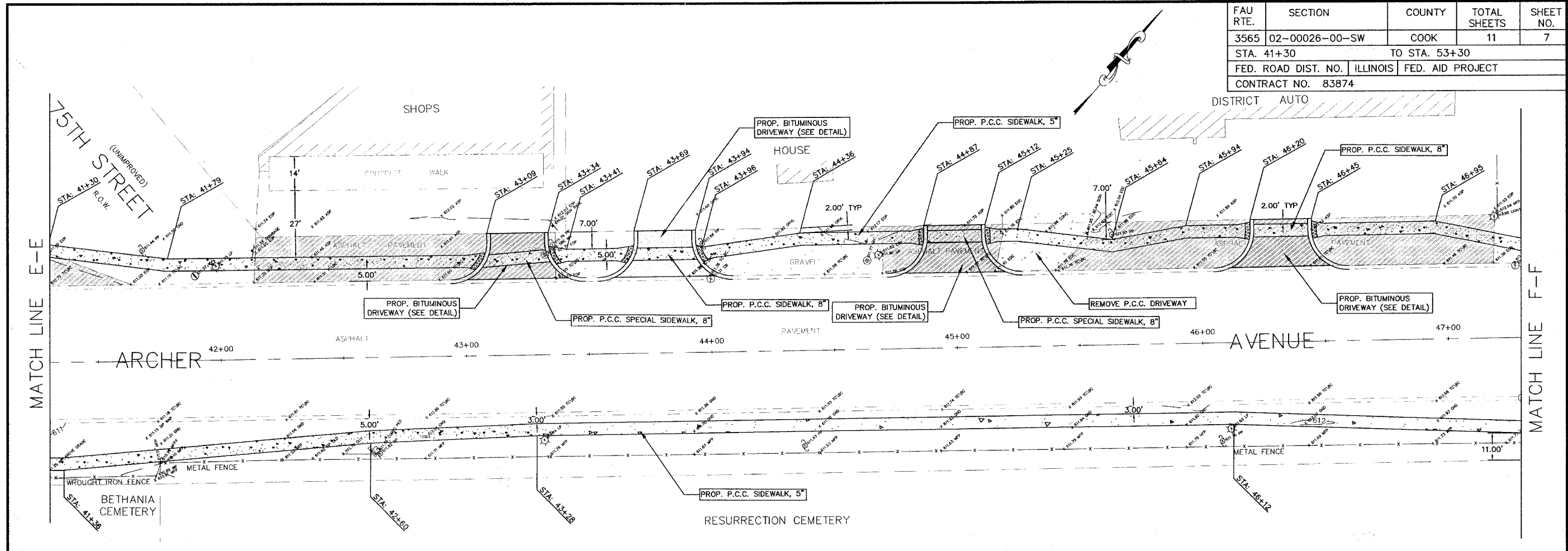


hbe **Hoefler-Butler Engineering, Inc.**
 Consulting Civil Engineers • Land Surveyors
 PROFESSIONAL DESIGN FIRM LICENSE NO. 04-06867
 8714 S. ROBERTS ROAD • HICKORY HILLS, ILLINOIS 60457
 (708) 599-8988 FAX (708) 599-8796

REVISIONS		ILLINOIS DEPARTMENT OF TRANSPORTATION VILLAGE OF JUSTICE ARCHER AVENUE SIDEWALK CONSTRUCTION OAK GROVE RD. TO 71ST STREET PLAN AND PROFILE STA. 29+29 TO 41+30
NAME	DATE	
PER IDOT REVIEW	06/13/06	SCALE: HORIZ. 1" = 20' DATE: 02/23/06 DRAWN BY: EDC CHECKED BY: SAL

HBE JOB# 03-719

FAU R.T.E.	SECTION	COUNTY	TOTAL SHEETS	SHEET NO.
3565	02-00026-00-SW	COOK	11	7
STA. 41+30		TO STA. 53+30		
FED. ROAD DIST. NO.	ILLINOIS	FED. AID PROJECT		
CONTRACT NO. 83874				

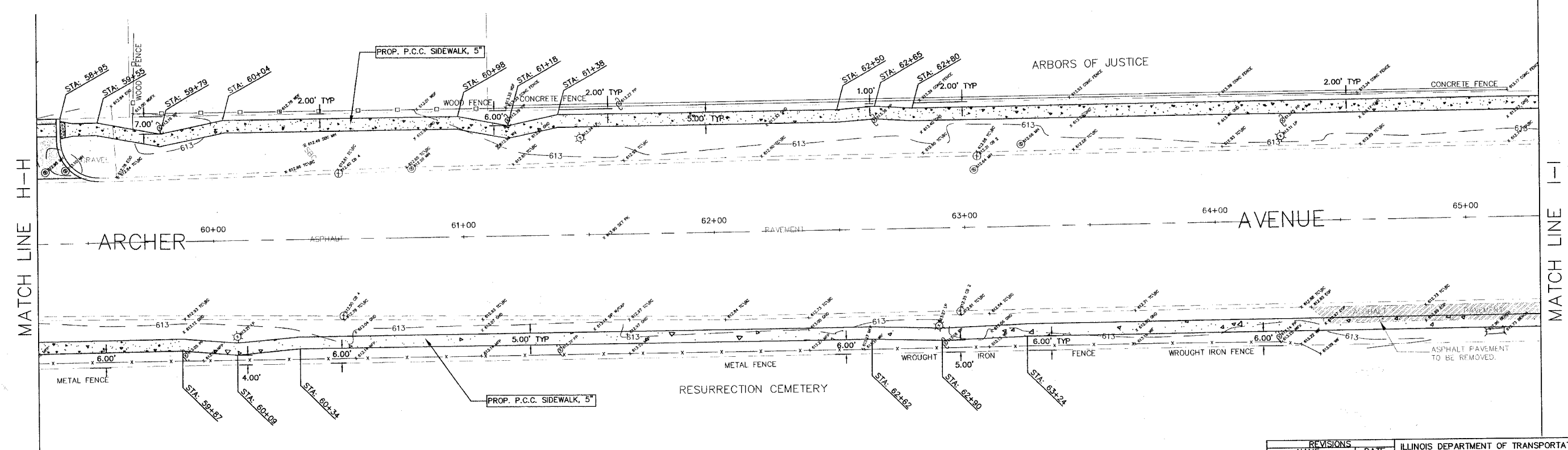
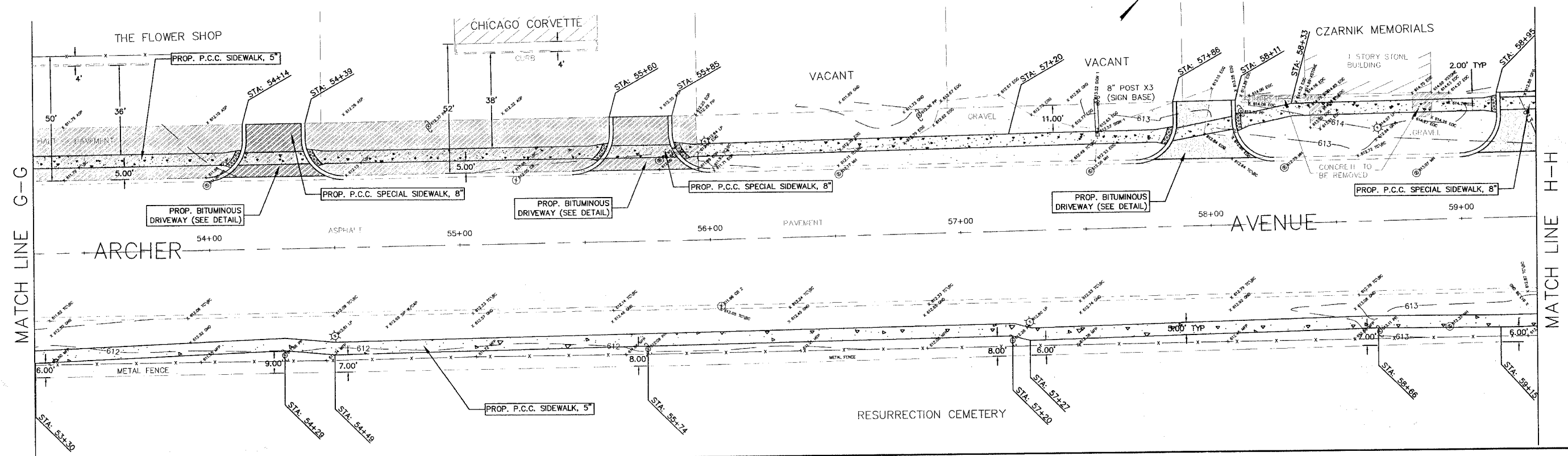


hbe **Hoefler-Butler Engineering, Inc.**
 Consulting Civil Engineers - Land Surveyors
 PROFESSIONAL DESIGN FIRM LICENSE NO. 184-08819 60457
 8714 S. ROBERTS ROAD, HICKORY HILLS, ILLINOIS 60457
 (708) 599-8900 FAX (708) 599-8799

REVISIONS		DATE	ILLINOIS DEPARTMENT OF TRANSPORTATION VILLAGE OF JUSTICE ARCHER AVENUE SIDEWALK CONSTRUCTION OAK GROVE RD. TO 71ST STREET PLAN AND PROFILE STA. 41+30 TO 53+30
NO.	DESCRIPTION		
1	PER IDOT REVIEW	06/13/06	SCALE: HORIZ: 1"=20' DATE: 02/28/06 DRAWN BY: ECC CHECKED BY: SAL

HEB 02/28/06-03-719

FAU RTE.	SECTION	COUNTY	TOTAL SHEETS	SHEET NO.
3565	02-00026-00-SW	COOK	11	8
STA. 53+30		TO STA. 65+30		
FED. ROAD DIST. NO.	ILLINOIS	FED. AID PROJECT		
CONTRACT NO. 83874				



hbe **Hoefler-Butler Engineering, Inc.**
 Consulting Civil Engineers • Land Surveyors
 PROFESSIONAL DESIGN FIRM LICENSE NO. 04-000873 60457
 874 S. KEMPERS ROAD, ROCKY HILLS, ILLINOIS 60670
 (708) 379-8980 FAX (708) 379-8790

REVISIONS		DATE
NAME	PER	
		06/13/06

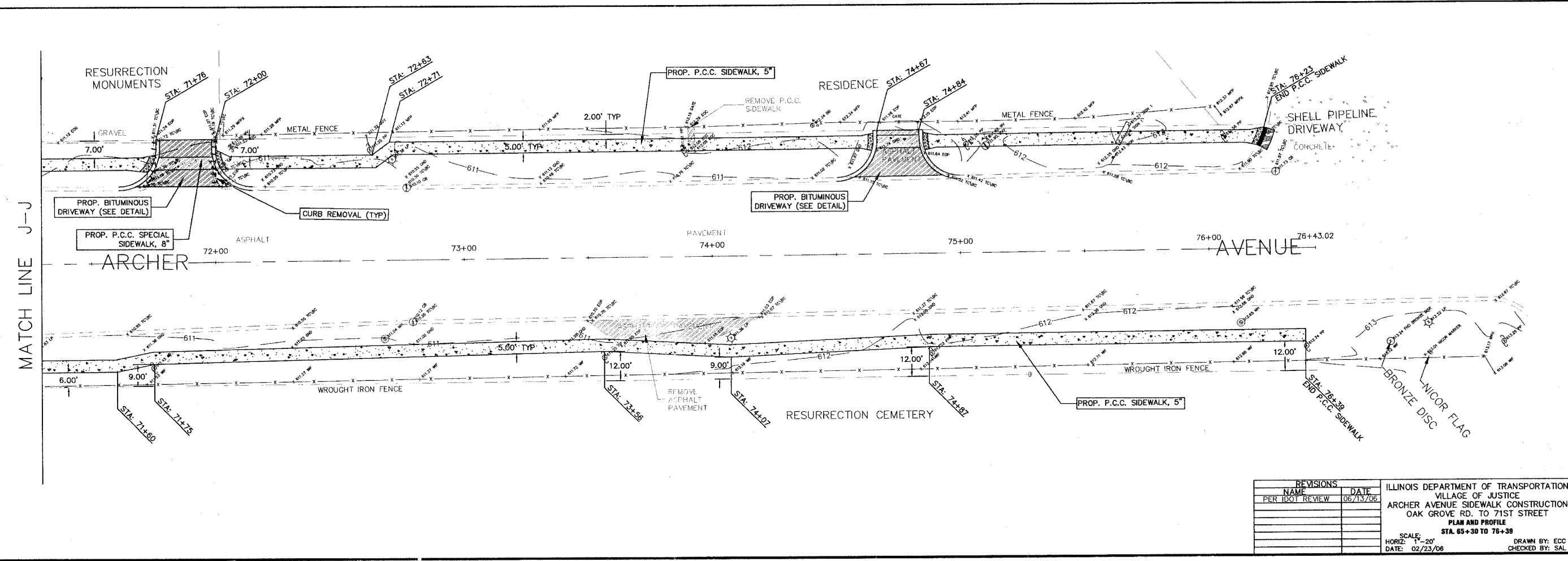
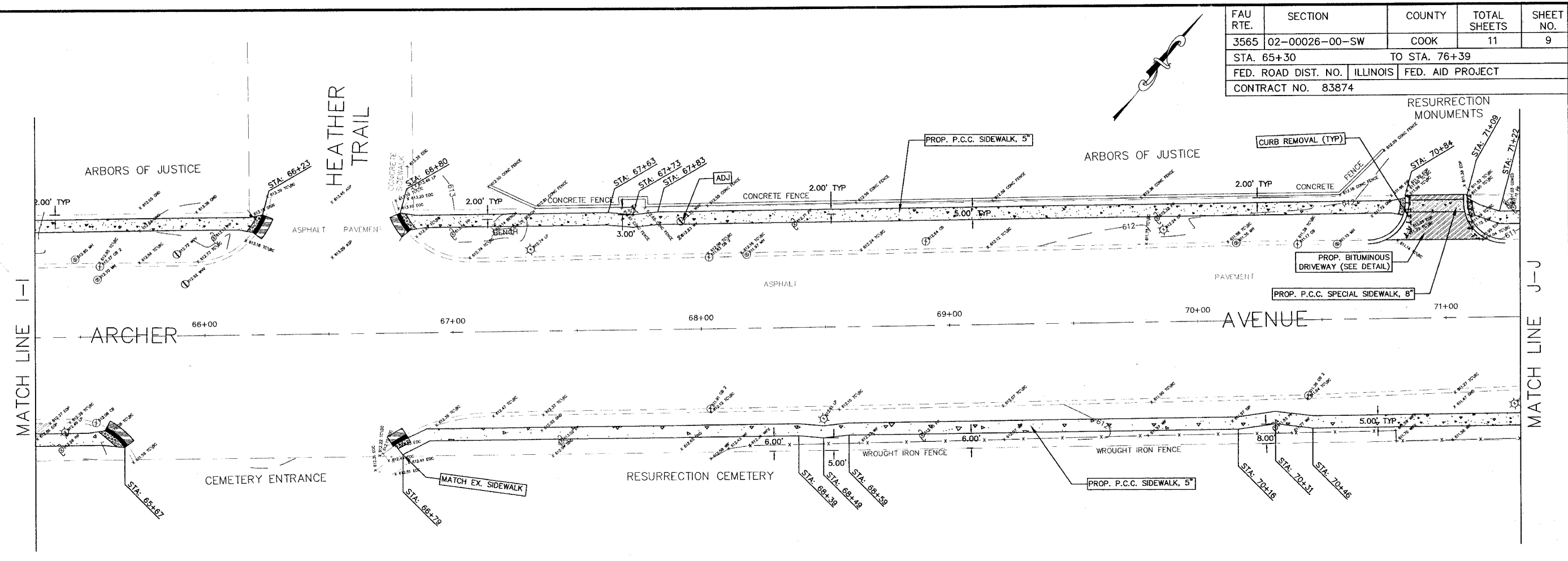
ILLINOIS DEPARTMENT OF TRANSPORTATION
 VILLAGE OF JUSTICE
 ARCHER AVENUE SIDEWALK CONSTRUCTION
 OAK GROVE RD. TO 71ST STREET
 PLAN AND PROFILE
 STA. 53+30 TO 65+30

SCALE:
 HORIZ: 1" = 20'
 DATE: 02/28/06

DRAWN BY: ECC
 CHECKED BY: SAL

HBE JOB# 03-719

FAU RTE.	SECTION	COUNTY	TOTAL SHEETS	SHEET NO.
3565	02-00026-00-SW	COOK	11	9
STA. 65+30		TO STA. 76+39		
FED. ROAD DIST. NO.		ILLINOIS	FED. AID PROJECT	
CONTRACT NO. 83874				

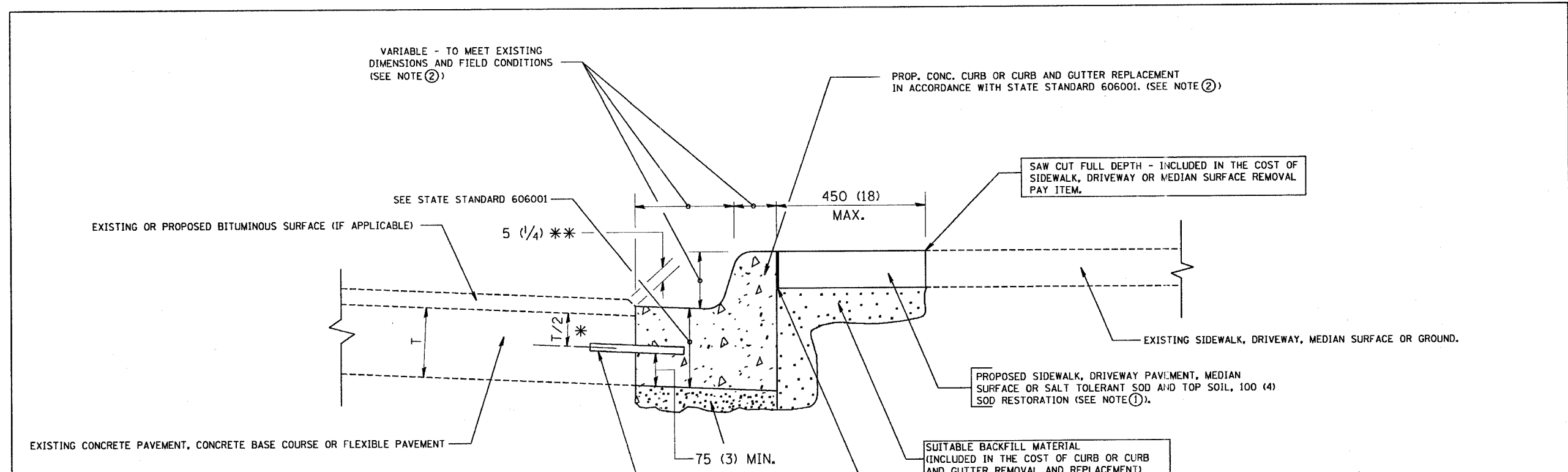


hbe Hoeffler-Butler Engineering, Inc.
 Consulting Civil Engineers - Land Surveyors
 PROFESSIONAL DESIGN FIRM LICENSE NO. 04-00089
 674 S. ROBERTS ROAD - HICKORY HILLS, ILLINOIS 60437
 (708) 599-8986 FAX (708) 599-8796

REVISIONS		ILLINOIS DEPARTMENT OF TRANSPORTATION VILLAGE OF JUSTICE ARCHER AVENUE SIDEWALK CONSTRUCTION OAK GROVE RD. TO 71ST STREET PLAN AND PROFILE STA. 65+30 TO 76+39
NAME	DATE	
PER IDOT REVIEW	06/13/06	SCALE: 1"=20' HORIZ: 1"=20' DATE: 02/23/06 DRAWN BY: ECC CHECKED BY: SAL

HBE JOB# 03-719

FAU RTE.	SECTION	COUNTY	TOTAL SHEETS	SHEET NO.
3565	02-00026-00-SW	COOK	11	11
STA. 12+21		TO STA. 76+38		
FED. ROAD DIST. NO.		ILLINOIS	FED. AID PROJECT	
CONTRACT NO. 83874				



- * 75 (3) MINIMUM FROM TOP AND BOTTOM OF THE CONCRETE PAVEMENT OR BASE COURSE.
- * * IF THE FINAL SURFACE OF THE PAVEMENT IS CONCRETE, THE GUTTER IS TO BE FLUSH WITH THE PAVEMENT.
- NOTE: ① SIDEWALK, DRIVEWAY PAVEMENT OR MEDIAN SURFACE SHALL BE SIMILAR TO THE MATERIAL BEING REMOVED AND WILL BE PAID FOR SEPARATELY.
- SALT TOLERANT SOD AND TOP SOIL, 100 (4) RESTORATION WILL NOT BE PAID FOR SEPARATELY, BUT SHALL BE INCLUDED IN THE COST OF CURB OR CURB AND GUTTER REMOVAL AND REPLACEMENT.
- ② CURB OR CURB AND GUTTER REPLACEMENT SHALL MATCH THE SHAPE OF THE EXISTING CURB OR CURB AND GUTTER UNLESS OTHERWISE SPECIFIED.
- ③ FOR CURB OR CURB AND GUTTER REMOVAL AND REPLACEMENT ADJACENT TO FLEXIBLE PAVEMENT DELETE EPOXY COATED TIE BARS.
- ④ LONGITUDINAL BARS, IF ENCOUNTERED IN THE EXISTING CURB OR CURB AND GUTTER, ARE NOT TO BE REPLACED. CUTTING AND REMOVING LONGITUDINAL BARS SHALL BE INCLUDED IN THE COST OF CURB OR CURB AND GUTTER REMOVAL AND REPLACEMENT.
- ⑤ THE COST OF BITUMINOUS SURFACE REMOVAL IN THE EXISTING GUTTER FLAG SHALL BE INCLUDED IN THE COST OF THE CURB AND GUTTER REMOVAL AND REPLACEMENT.
- ⑥ THE REMOVAL AND REPLACEMENT OF THE EXISTING CURB OR CURB AND GUTTER SHALL BE DONE IN ACCORDANCE WITH THE APPLICABLE PORTIONS OF SECTION 440 AND 606 OF THE STANDARD SPECIFICATIONS.
- ⑦ THE LOCATIONS OF REMOVAL AND REPLACEMENT OF EXISTING CURB OR CURB AND GUTTER SHALL BE DETERMINED BY THE RESIDENT ENGINEER AT THE TIME OF CONSTRUCTION.

UNSUITABLE SUB-BASE MATERIAL TO BE REMOVED, IF DIRECTED BY THE ENGINEER, SHALL BE REPLACED WITH EITHER SUB-BASE GRANULAR MATERIAL, TYPE B OR ADDITIONAL THICKNESS OF CONCRETE.

REMOVAL AND REPLACEMENT 100 (4) OR LESS IS INCLUDED IN THE COST OF CURB OR CURB AND GUTTER REMOVAL AND REPLACEMENT.

REMOVAL AND REPLACEMENT IN EXCESS OF 100 (4) WILL BE PAID FOR IN ACCORDANCE WITH ARTICLE 109.04 OF THE STANDARD SPECIFICATIONS.

PROPOSED NO. 20 (NO. 6) EPOXY COATED TIE BARS 600 (24) LONG AT 600 (24) CENTERS WILL NOT BE PAID FOR SEPARATELY. DELETE EPOXY COATED TIE BARS IF EXISTING TIE BARS ARE USUABLE AS DETERMINED BY THE ENGINEER. (SEE NOTE ③).

BASIS OF PAYMENT:
THIS WORK WILL BE PAID FOR AT THE CONTRACT UNIT PRICE PER METER (FOOT) FOR "CURB REMOVAL AND REPLACEMENT" OR "COMBINATION CONCRETE CURB AND GUTTER REMOVAL AND REPLACEMENT".

CURB OR CURB AND GUTTER REMOVAL AND REPLACEMENT

REVISIONS	
NAME	DATE
M. DE YONG	05/28/91
A. HOUSEH	03/11/94
R. SHAH	02/24/96
R. SHAH	03/02/96
R. SHAH	08/19/96
R. SHAH	09/12/96
R. SHAH	09/19/96
R. SHAH	10/03/96
A. ABBAS	03/21/97
M. GOMEZ	01/22/01

ALL DIMENSIONS ARE IN MILLIMETERS (INCHES) UNLESS OTHERWISE SHOWN.

ILLINOIS DEPARTMENT OF TRANSPORTATION

CURB OR CURB AND GUTTER REMOVAL AND REPLACEMENT

SCALE: VERT. _____
HORIZ. _____

DATE: 2/15/2006

DRAWN BY _____
CHECKED BY _____
BD600-06 (BD-24)
REVISION DATE: 12/06/99

hbe Hoeffler-Butler Engineering, Inc.
Consulting Civil Engineers - Land Surveyors
PROFESSIONAL DESIGN FIRM LICENSE NO. 084-00089
8714 S. ROBERTS ROAD - ROCKFORD HILLS, ILLINOIS 60057
708-999-8980 FAX 708-999-8790

PLT: MME
DATE: 2/15/2006
PLOT SCALE: 1/8" = 1'-0"
USER: MME

HBE 084-03-719