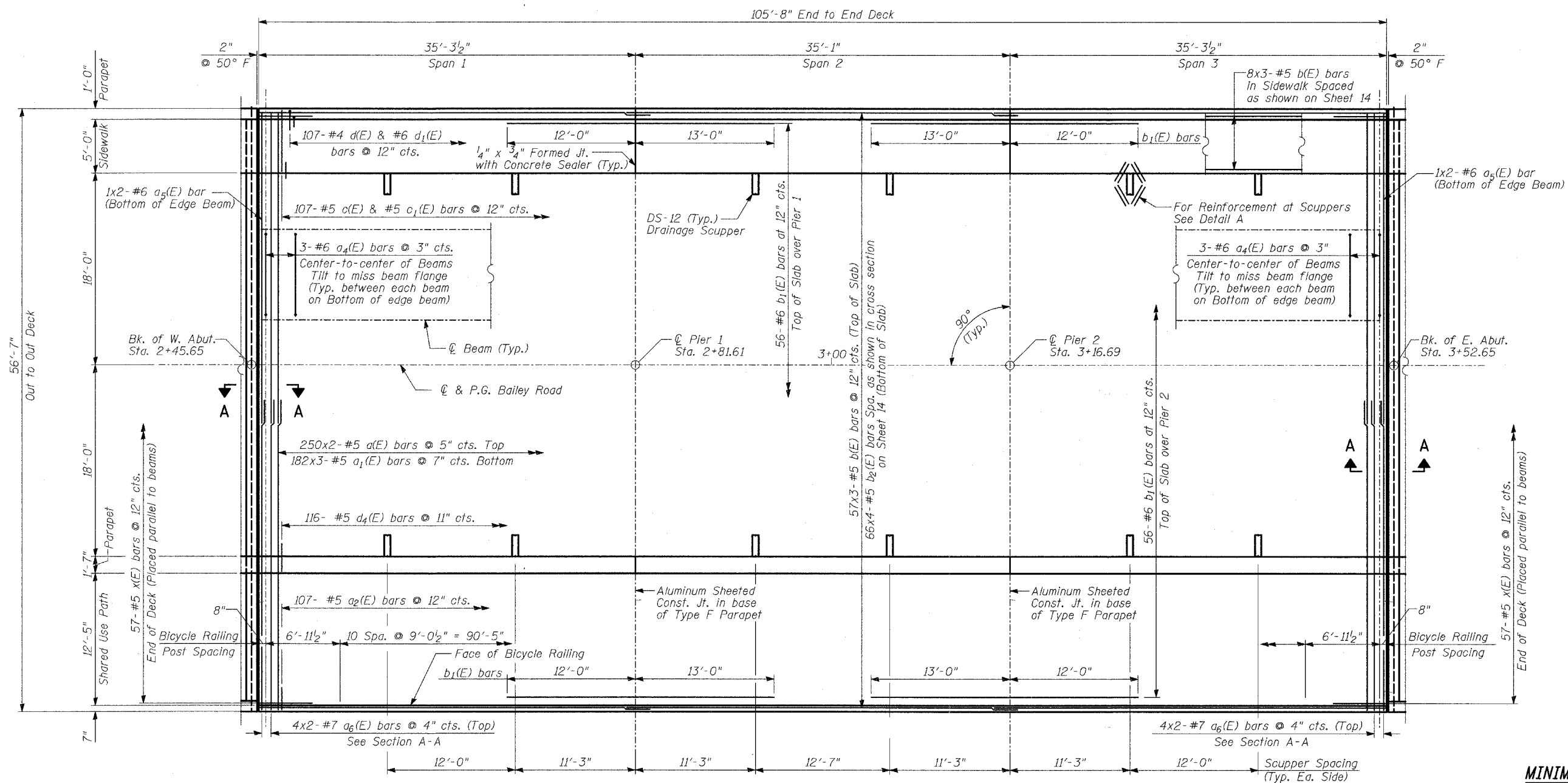


STATE OF ILLINOIS
DEPARTMENT OF TRANSPORTATION

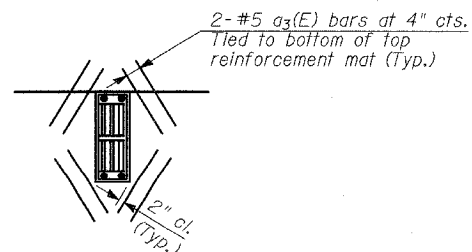
ADJUT. NO.	SECTION	COUNTY	TOTAL SHEETS	SHEET NO.
1545	*	DUPAGE	97	33
FED. ROAD DIST. NO.	ILLINOIS	FED. AID PROJECT		
00-00115-00-BR			CONTRACT NO. 83961	



PLAN

MINIMUM BAR LAPS

Bar	Lap
#5	2'-2"
#6	2'-7"
#7	3'-5"

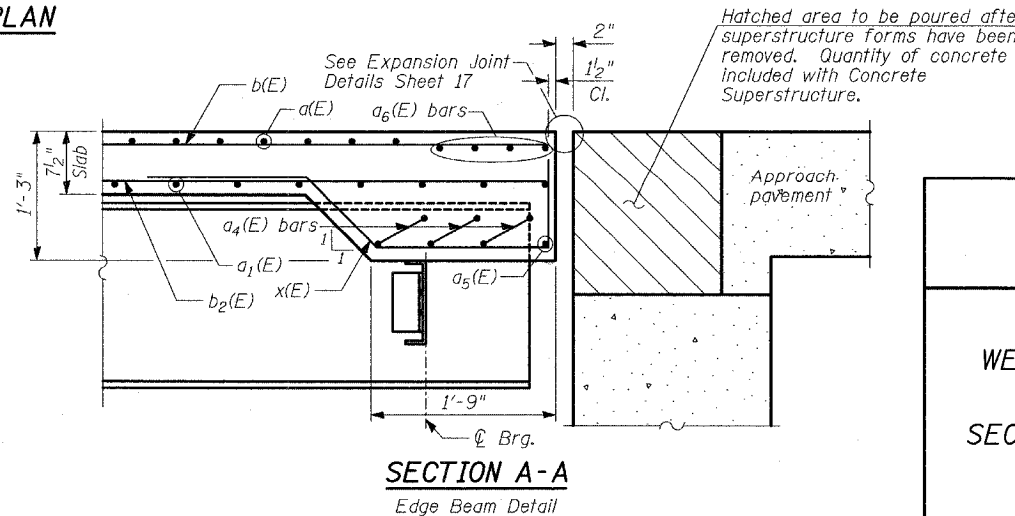


DETAIL A

Note:
Cut longitudinal reinforcement to clear drainage scuppers.

NOTES:

- See Sheet 14 for Superstructure Details and Bill of Material.
- Bars indicated thus 20x3-#5 etc. indicates 20 lines of bars with 3 lengths per line.
- See Sheet 13 for Parapet Reinforcement.
- Dimensions are based on a Rolled Rail Strip Seal Joint. If the Contractor elects to use the Welded Rail Strip Seal Joint, deck dimensions may require adjustments to satisfy the details on Sheet 17.



SECTION A-A
Edge Beam Detail

DECK PLAN

BAILEY ROAD OVER THE
WEST BRANCH OF THE DUPAGE RIVER
FAU 1545
SECTION 00-00115-00-BR STA. 2+99.15
DUPAGE COUNTY
S.N. 022-3028

TYLIN INTERNATIONAL

DESIGNED	- DE
CHECKED	- SNB
DRAWN	- DE
CHECKED	- SNB