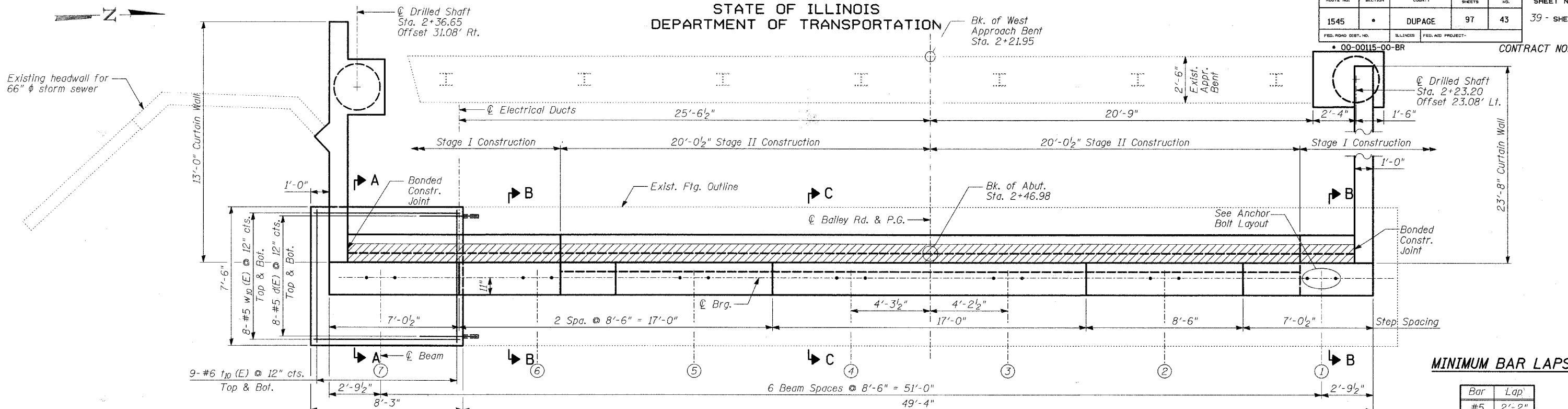


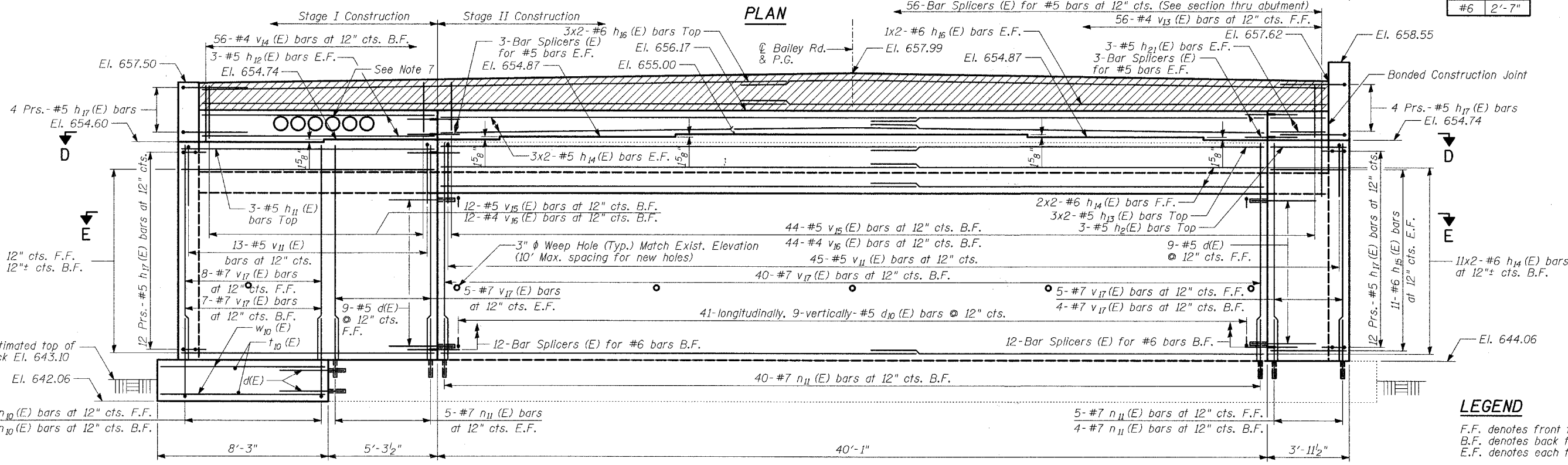
STATE OF ILLINOIS
DEPARTMENT OF TRANSPORTATION

ROUTE NO.	SECTION	COUNTY	TOTAL SHEETS	SHEET NO.	SHEET NO. - 22
1545	•	DUPAGE	97	43	39 - SHEETS
FED. ROAD DIST. NO.		ILLINOIS	FED. AID PROJECT-		CONTRACT NO. 83961
• 00-00115-00-BR					



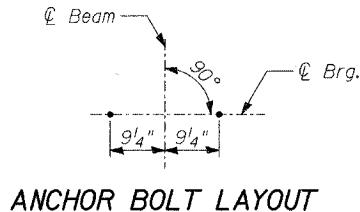
MINIMUM BAR LAPS

Bar	Lap
#5	2'-2"
#6	2'-7"



NOTES:

- Space reinforcement in cap to miss anchor bolts.
- All edges shall have standard $\frac{3}{4}$ " chamfers.
- Epoxy grout #5 bars in 9" deep minimum drilled holes and #7 bars in 12" deep minimum drilled holes according to Article 584 of the Standard Specifications. The grout and method of application shall be approved by the Engineer.
- Bars indicated thus: 3x2-#5 etc. indicates 3 lines of bars with 2 lengths per line.
- For Sections A-A, B-B, C-C, D-D and E-E see Sheet 24.
- For details of reinforcement and Bill of Material see Sheet 28.
- 8" PVC Pipe Sleeve for 6" PVC Electrical conduits. Price of 8" PVC shall be included in the cost of "Concrete Structures".
- Pour steps monolithically with cap.
- Allowable Bearing Pressure for footing=12,000 psf. Allowable Bearing Pressure for drilled shafts is 20 tons/sq.ft



TYLIN INTERNATIONAL

DESIGNED	PL
CHECKED	SP
DRAWN	PL
CHECKED	SP

WEST ABUTMENT

BAILEY ROAD OVER THE
WEST BRANCH OF THE DUPAGE RIVER
FAU 1545
SECTION 00-00115-00-BR STA. 2+99.15
DUPAGE COUNTY
S.N. 022-3028