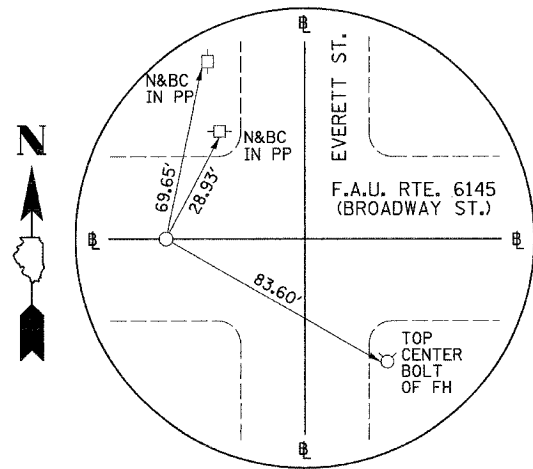
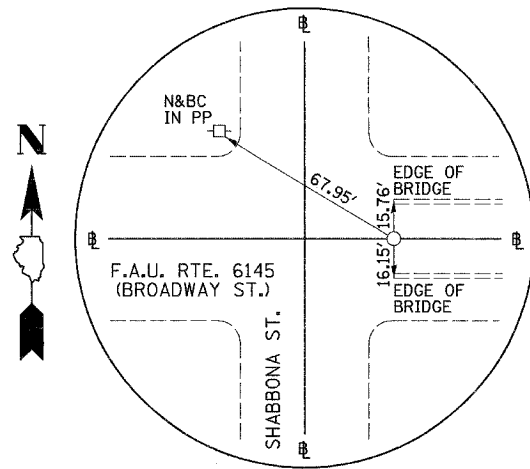


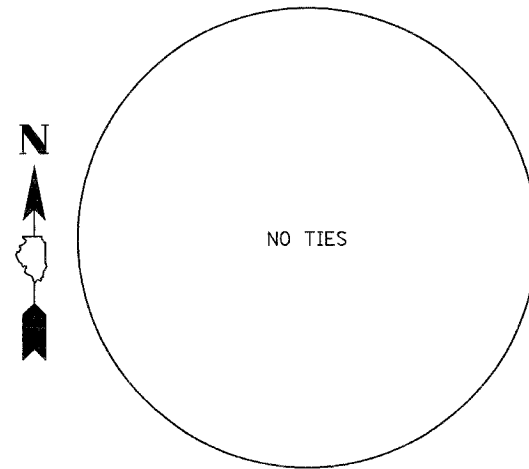
F.A.U. RTE.	SECTION	COUNTY	TOTAL SHEETS	SHEET NO.
6145	01-00590-00-BR	LoSALLE	168	20
STA. N/A		TO STA. N/A		
FED. ROAD DIST. NO. 3		ILLINOIS	FEDERAL AID PROJECT	
CONTRACT NO. 87293				



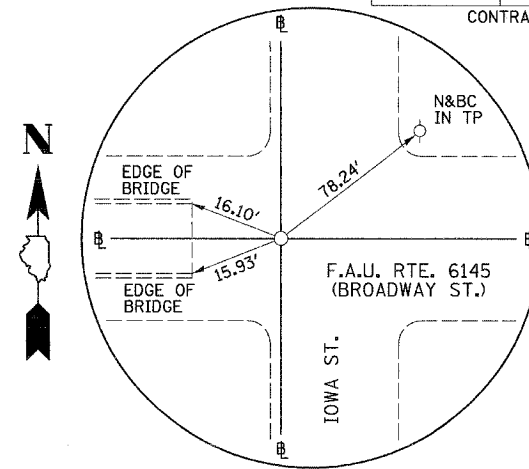
P.O.T. #22 STA. 12+06.45  
F.A.U. RTE. 6145 (BROADWAY ST.)  
(P.K. NAIL)



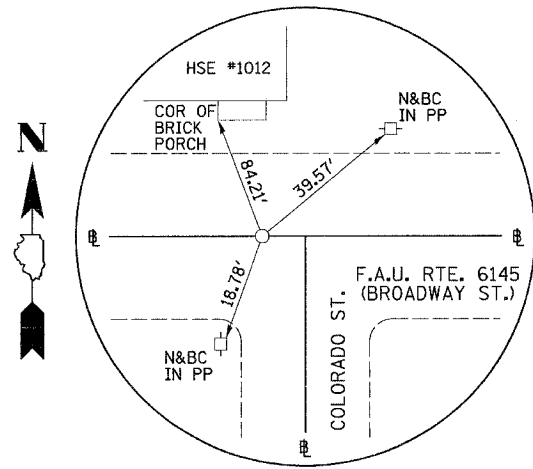
P.O.T. #23 STA. 16+65.73  
F.A.U. RTE. 6145 (BROADWAY ST.)  
(P.K. NAIL)



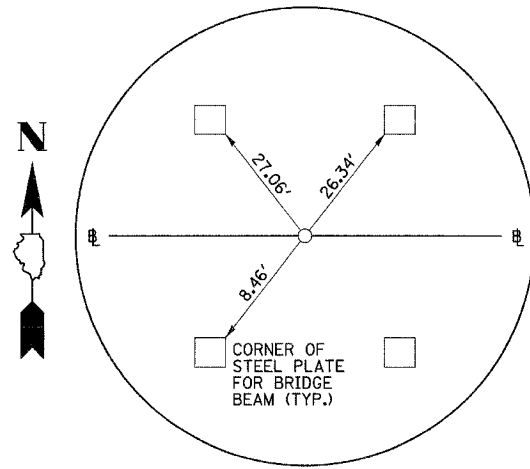
P.O.T. #24 STA. 23+50.30  
F.A.U. RTE. 6145 (BROADWAY ST.)  
(P.K. NAIL)



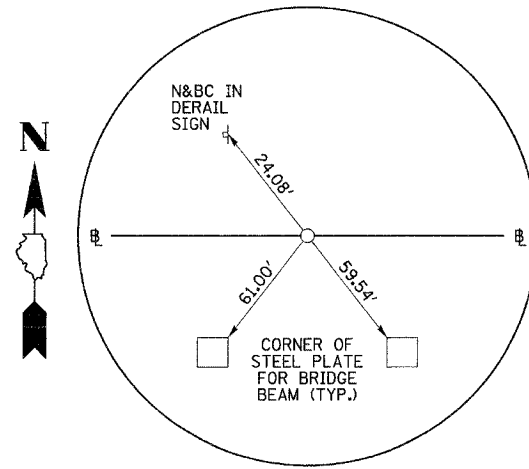
P.I. #25 STA. 27+39.80  
F.A.U. RTE. 6145 (BROADWAY ST.)  
(P.K. NAIL)



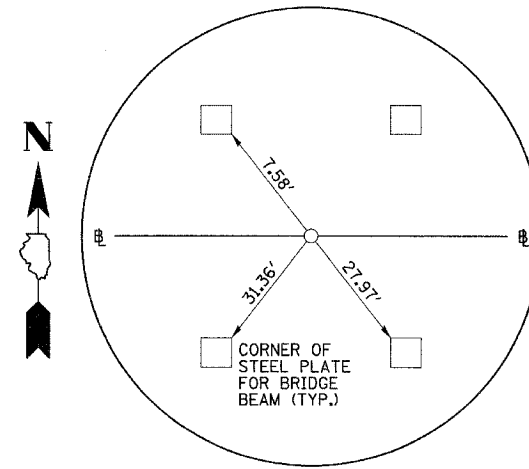
P.O.T. #26 P.I. STA. 31+16.90  
F.A.U. RTE. 6145 (BROADWAY ST.)  
(P.K. NAIL)



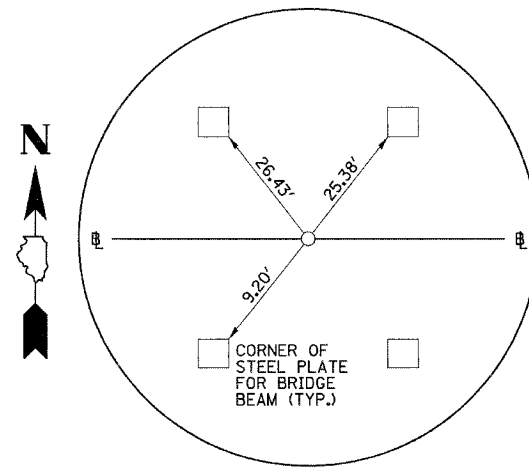
P.O.T. #28 STA. 18+49.93  
UNDER BRIDGE  
(I-ROD)



P.O.T. #29 STA. 21+00.85  
UNDER BRIDGE  
(I-ROD)



P.O.T. #30 STA. 23+82.81  
UNDER BRIDGE  
(I-ROD)



P.O.T. #31 STA. 25+09.69  
UNDER BRIDGE  
(I-ROD)