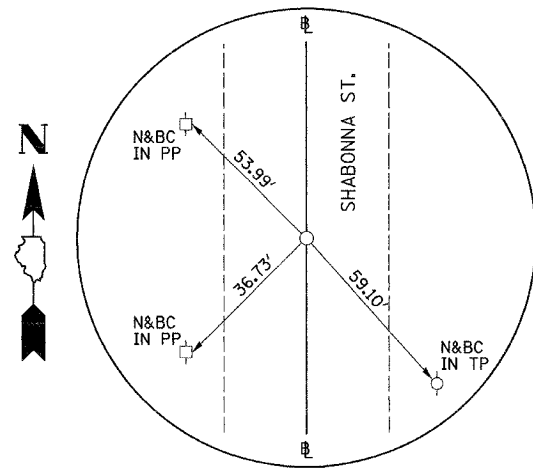
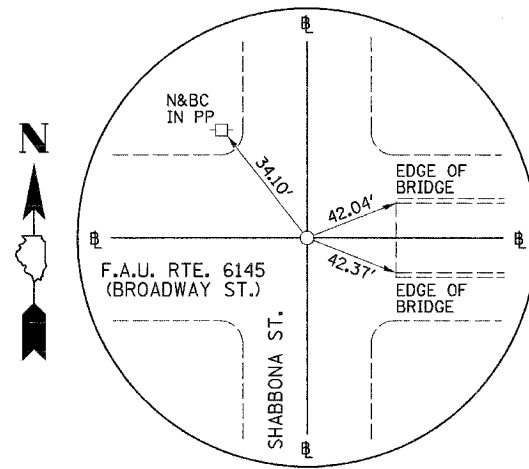


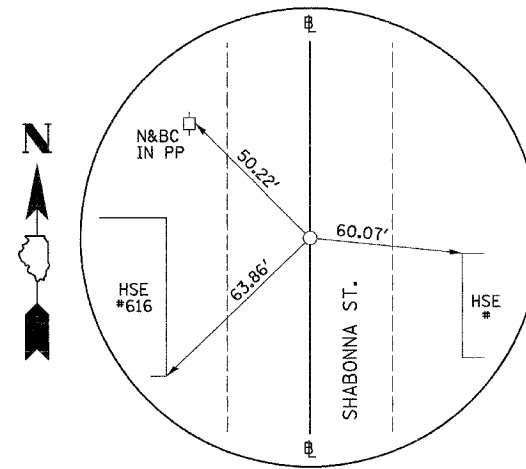
F.A.U. RTE.	SECTION	COUNTY	TOTAL SHEETS	SHEET NO.
6145	01-00590-00-BR	LOGSALLE	168	21
STA. N/A		TO STA. N/A		
FED. ROAD DIST. NO. 3 ILLINOIS		FEDERAL AID PROJECT		
CONTRACT NO. 87293				



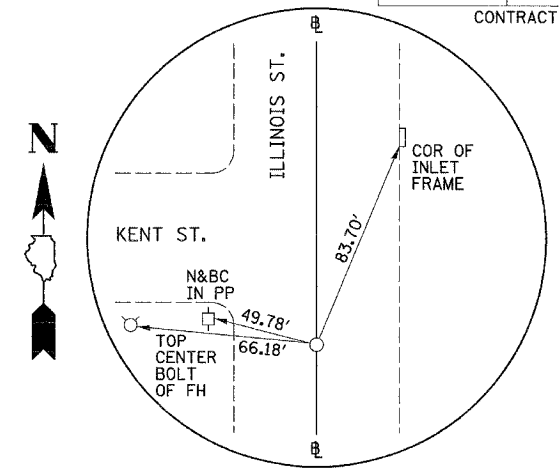
P.O.T. #35 STA. 65+87.34
SHABBONA ST.
(P.K. NAIL)



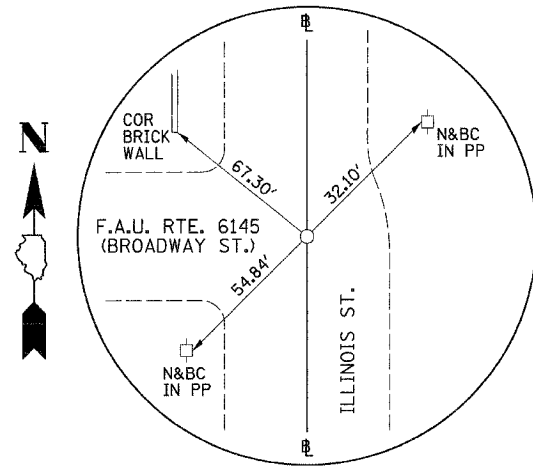
P.O.T. #36 STA. 70+00.00
SHABBONA ST.
(P.K. NAIL)



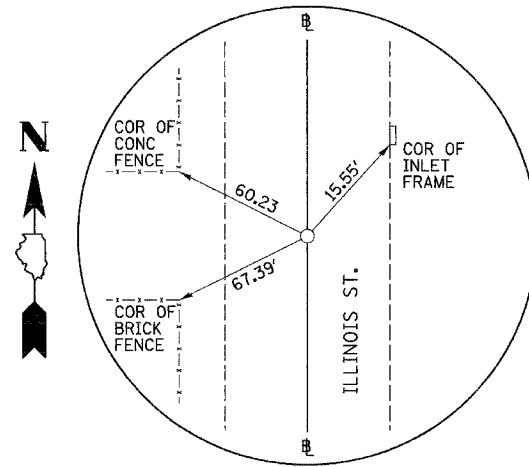
P.O.T. #37 STA. 74+89.18
SHABBONA ST.
(P.K. NAIL)



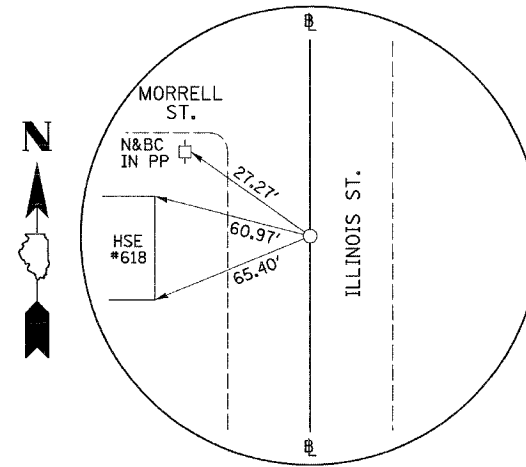
P.O.T. #38 STA. 83+93.34
ILLINOIS ST.
(P.K. NAIL)



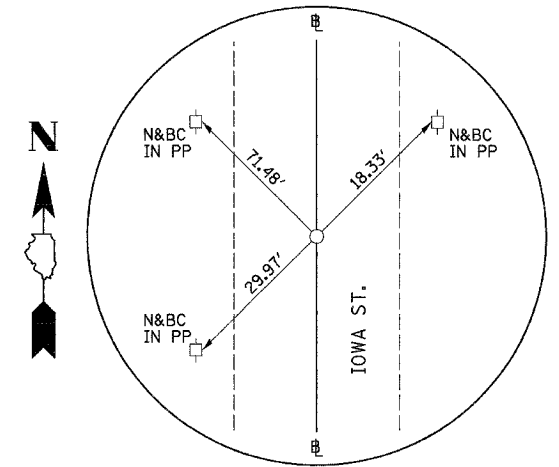
P.I. #39 STA. 90+00.00
ILLINOIS ST.
(P.K. NAIL)



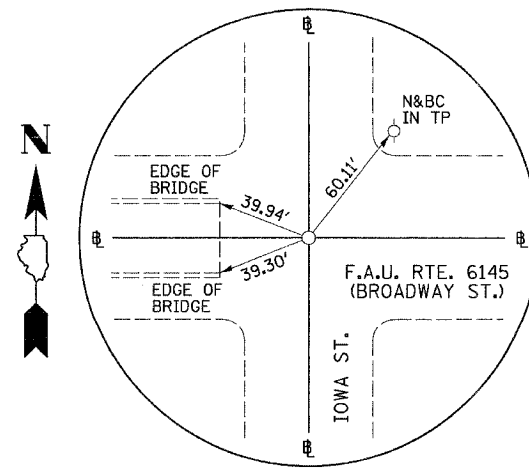
P.I. #40 STA. 91+67.00
ILLINOIS ST.
(P.K. NAIL)



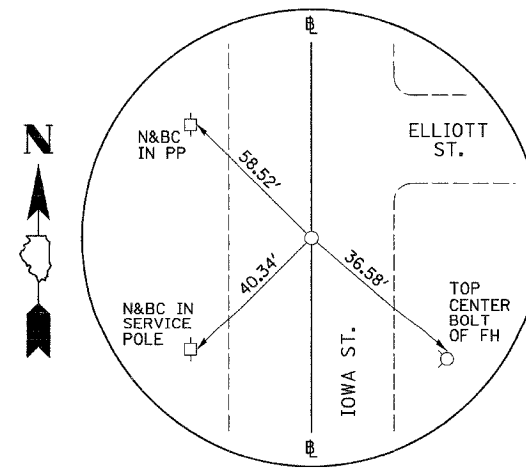
P.O.T. #41 STA. 95+12.96
ILLINOIS ST.
(P.K. NAIL)



P.O.T. #42 STA. 106+77.84
IOWA ST.
(P.K. NAIL)



P.O.T. #43 STA. 110+00.00
IOWA ST.
(P.K. NAIL)



P.O.T. #44 STA. 113+16.04
IOWA ST.
(P.K. NAIL)