

RTE. NO.	SECTION	COUNTY	TOTAL SHEETS	SHEET NO.
N/A	01-00590-00-BR	LaSALLE	168	31

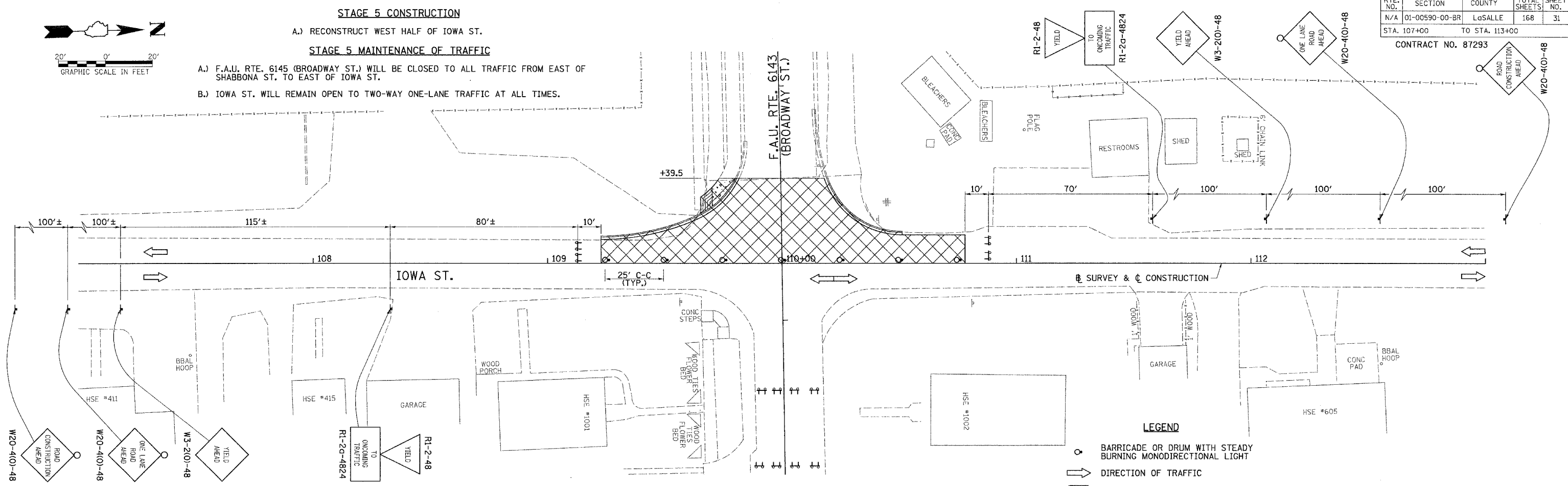
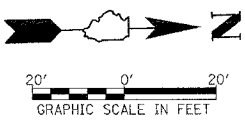
STA. 107+00 TO STA. 113+00  
CONTRACT NO. 87293

**STAGE 5 CONSTRUCTION**

A.) RECONSTRUCT WEST HALF OF IOWA ST.

**STAGE 5 MAINTENANCE OF TRAFFIC**

- A.) F.A.U. RTE. 6145 (BROADWAY ST.) WILL BE CLOSED TO ALL TRAFFIC FROM EAST OF SHABBONA ST. TO EAST OF IOWA ST.
- B.) IOWA ST. WILL REMAIN OPEN TO TWO-WAY ONE-LANE TRAFFIC AT ALL TIMES.



**LEGEND**

- BARRICADE OR DRUM WITH STEADY BURNING MONODIRECTIONAL LIGHT
- DIRECTION OF TRAFFIC
- CONSTRUCTION ZONE
- AREA CLOSED TO TRAFFIC
- TYPE III BARRICADE WITH FLASHING LIGHT (2-EA.)
- CONSTRUCTION SIGN

