

RTE. NO.	SECTION	COUNTY	TOTAL SHEETS	SHEET NO.
N/A	01-00590-00-BR	LoSALLE	168	32

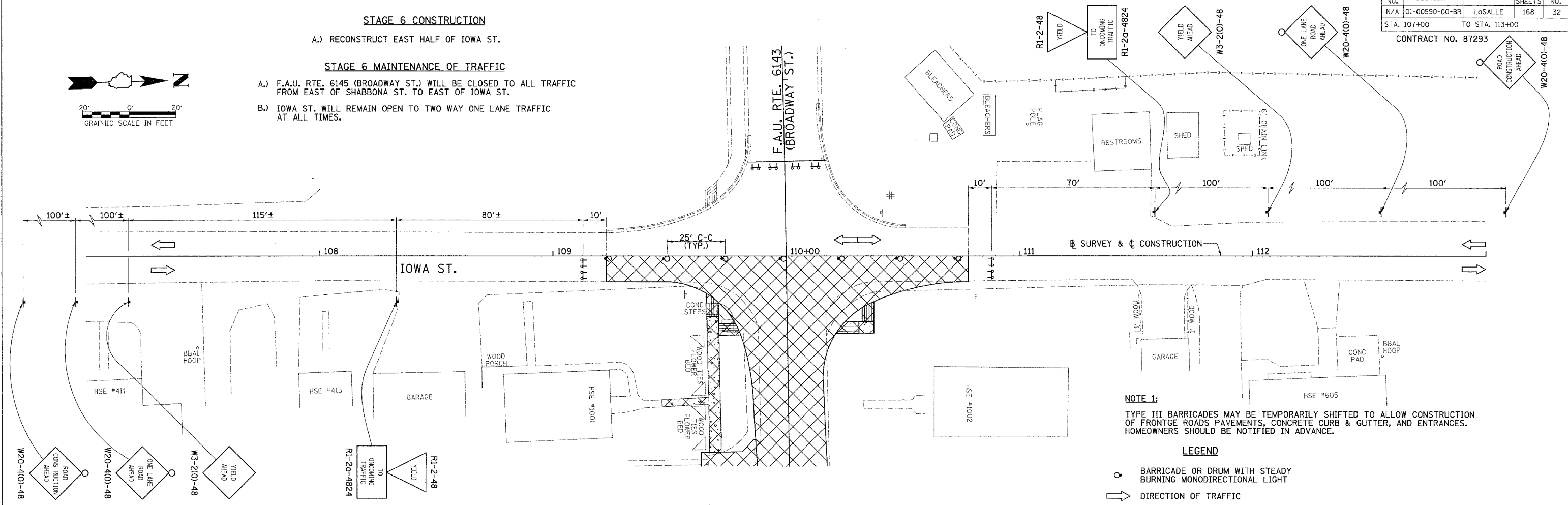
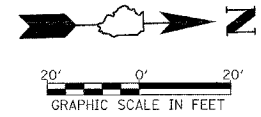
STA. 107+00 TO STA. 113+00  
CONTRACT NO. 87293

**STAGE 6 CONSTRUCTION**

A.) RECONSTRUCT EAST HALF OF IOWA ST.

**STAGE 6 MAINTENANCE OF TRAFFIC**

- A.) F.A.U. RTE. 6145 (BROADWAY ST.) WILL BE CLOSED TO ALL TRAFFIC FROM EAST OF SHABBONA ST. TO EAST OF IOWA ST.
- B.) IOWA ST. WILL REMAIN OPEN TO TWO WAY ONE LANE TRAFFIC AT ALL TIMES.



**NOTE 1:**  
TYPE III BARRICADES MAY BE TEMPORARILY SHIFTED TO ALLOW CONSTRUCTION OF FRONTGE ROADS PAVEMENTS, CONCRETE CURB & GUTTER, AND ENTRANCES. HOMEOWNERS SHOULD BE NOTIFIED IN ADVANCE.

**LEGEND**

- BARRICADE OR DRUM WITH STEADY BURNING MONODIRECTIONAL LIGHT
- ➔ DIRECTION OF TRAFFIC
- ▨ CONSTRUCTION ZONE
- ▧ AREA CLOSED TO TRAFFIC
- ⚡ TYPE III BARRICADE WITH FLASHING LIGHT (2-EA.)
- ⚡ CONSTRUCTION SIGN

