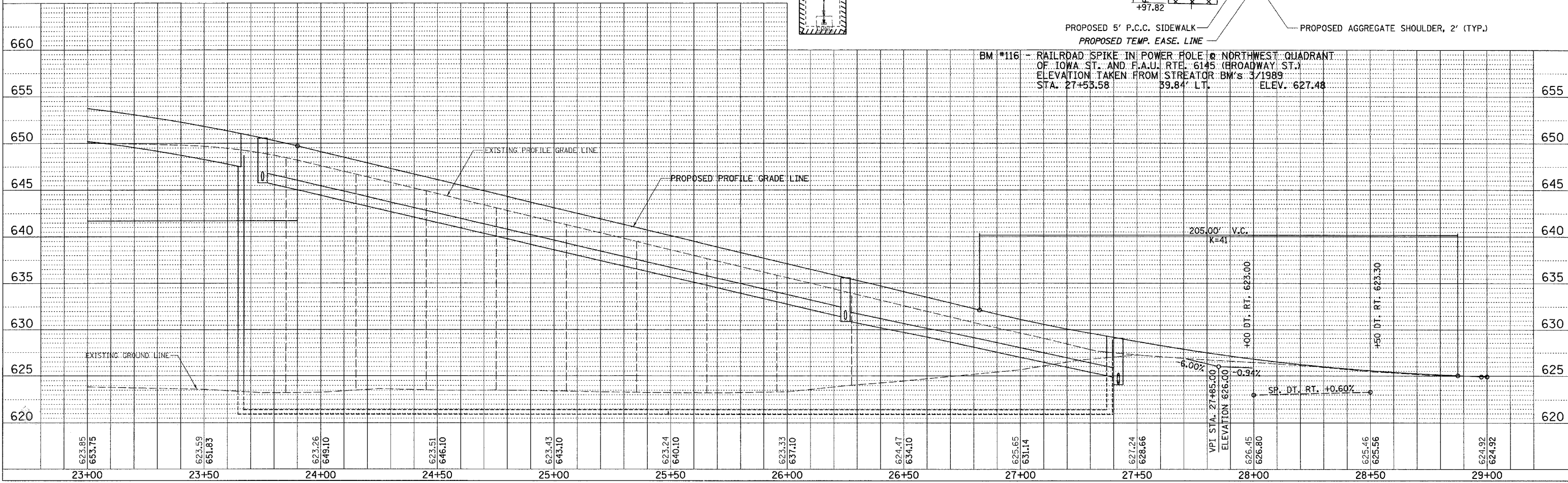
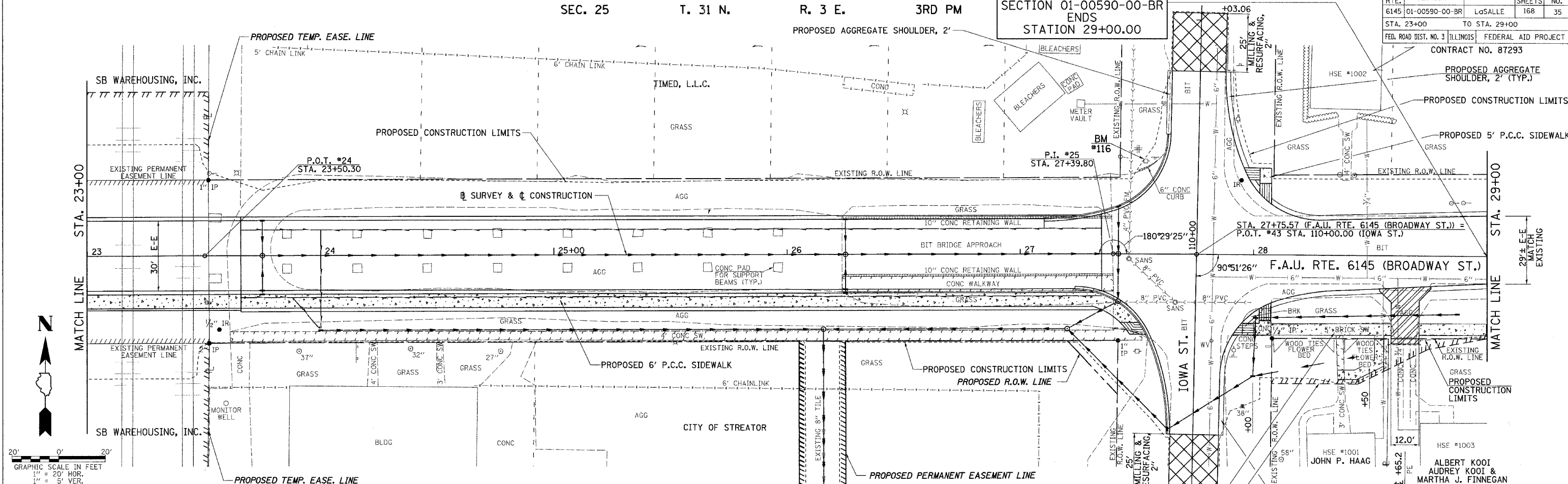
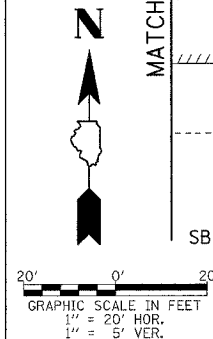


F.A.U. RTE.	SECTION	COUNTY	TOTAL SHEETS	SHEET NO.
6145	01-00590-00-BR	LsSALLE	168	35
STA. 23+00 TO STA. 29+00				
FED. ROAD DIST. NO. 3 ILLINOIS FEDERAL AID PROJECT				
CONTRACT NO. 87293				
PROPOSED AGGREGATE SHOULDER, 2' (TYP.)				
PROPOSED CONSTRUCTION LIMITS				
PROPOSED 5' P.C.C. SIDEWALK				

DATE	BY
SURVEYED	ALIGNED
CHECKED	CHECKED
NO. OF MAN. CHECKED	NO. OF MAN. CHECKED
NO.	NO.
CADD FILE NAME	

DATE	BY
SURVEYED	ALIGNED
CHECKED	CHECKED
NO. OF MAN. CHECKED	NO. OF MAN. CHECKED
NO.	NO.
CADD FILE NAME	



BM #116 - RAILROAD SPIKE IN POWER POLE @ NORTHWEST QUADRANT OF IOWA ST. AND F.A.U. RTE. 6145 (BROADWAY ST.) ELEVATION TAKEN FROM STREATOR BM'S 3/1989 STA. 27+53.58 39.84' LT. ELEV. 627.48