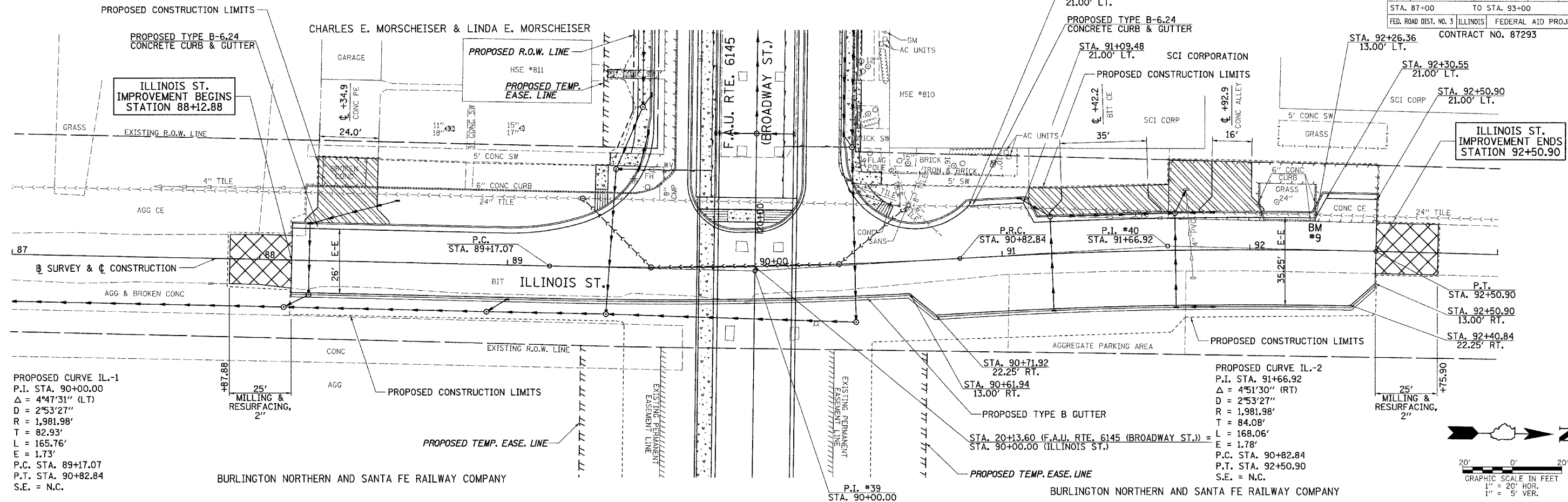


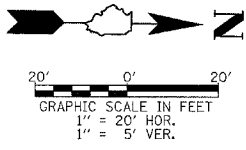
F.A.U. RTE.	SECTION	COUNTY	TOTAL SHEETS	SHEET NO.
6145	01-00590-00-BR	LoSALLE	168	40
STA. 87+00 TO STA. 93+00		FEDERAL AID PROJECT		
CONTRACT NO. 87293				

DATE	BY
SURVEYED	ALIGNED
NOTE BOOK	FILE NAME
NO.	

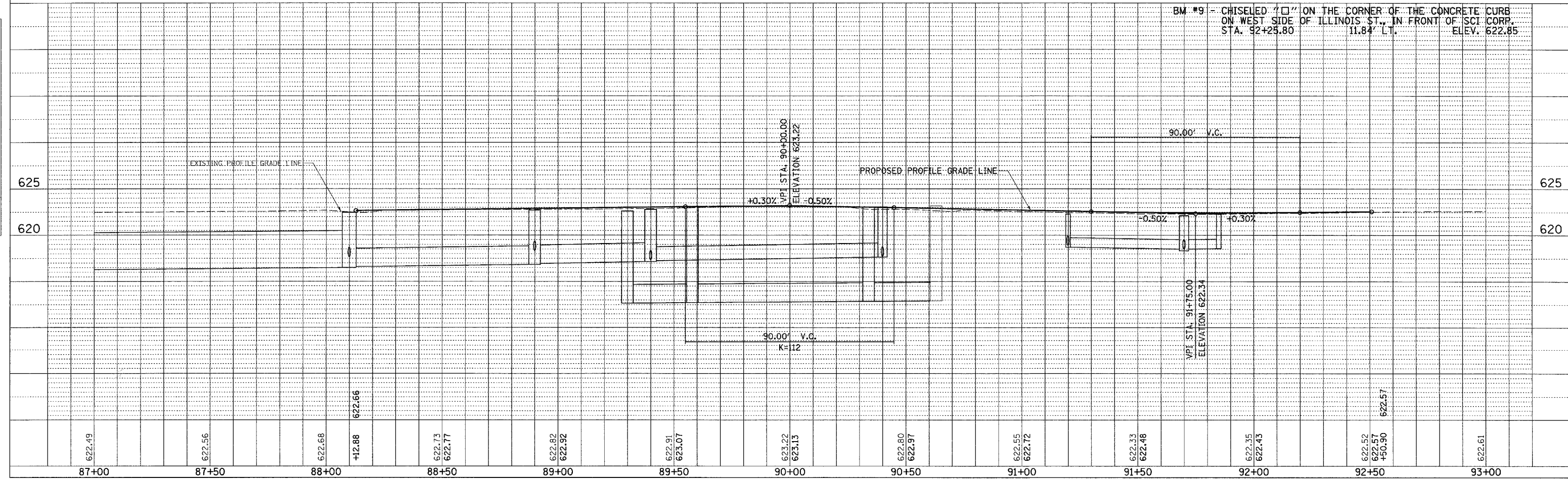


PROPOSED CURVE IL-1  
 P.I. STA. 90+00.00  
 $\Delta = 4^{\circ}47'31''$  (LT)  
 $D = 2^{\circ}53'27''$   
 $R = 1,981.98'$   
 $T = 82.93'$   
 $L = 165.76'$   
 $E = 1.73'$   
 P.C. STA. 89+17.07  
 P.T. STA. 90+82.84  
 S.E. = N.C.

PROPOSED CURVE IL-2  
 P.I. STA. 91+66.92  
 $\Delta = 4^{\circ}51'30''$  (RT)  
 $D = 2^{\circ}53'27''$   
 $R = 1,981.98'$   
 $T = 84.08'$   
 $L = 168.06'$   
 $E = 1.78'$   
 P.C. STA. 90+82.84  
 P.T. STA. 92+50.90  
 S.E. = N.C.



DATE	BY
SURVEYED	GRADES CHECKED
NOTE BOOK	BLK. NOTED
NO.	MEASURE NOTATIONS CHKD



BM #9 - CHISELED "C" ON THE CORNER OF THE CONCRETE CURB ON WEST SIDE OF ILLINOIS ST., IN FRONT OF SCI CORP. STA. 92+25.80 11.84' LT. ELEV. 622.85

87+00	87+50	88+00	88+50	89+00	89+50	90+00	90+50	91+00	91+50	92+00	92+50	93+00
-------	-------	-------	-------	-------	-------	-------	-------	-------	-------	-------	-------	-------