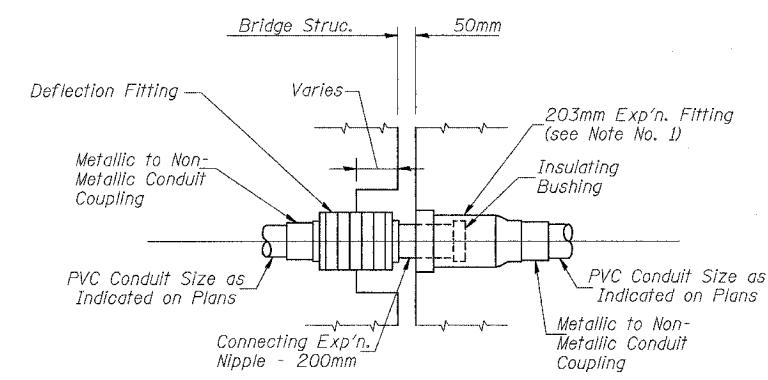
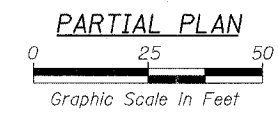
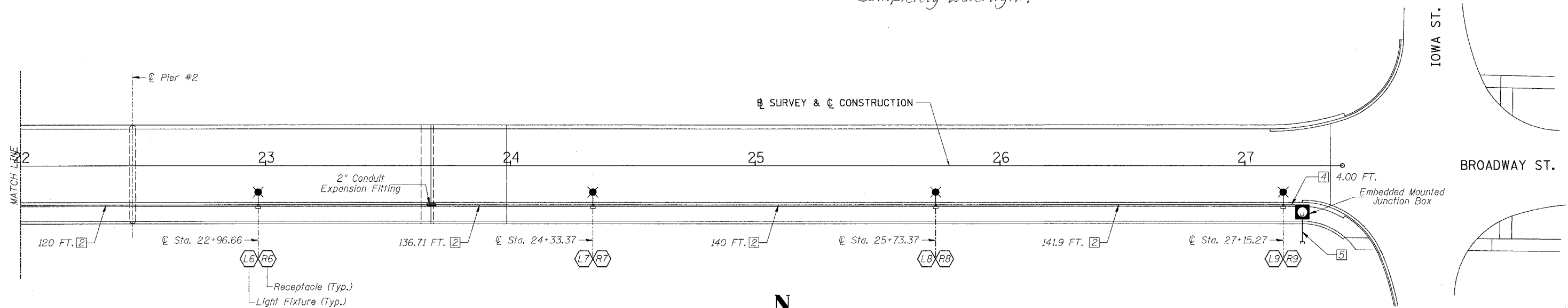


KEYED NOTES

- 1 3#4/0 & 1#2 IN 2" CONDUIT
- 2 2#4, 2#6, 1#4 GROUND, IN 2" CONDUIT
- 3 2#4, 2#6, 6#8, 1#4 GROUND, IN 2" CONDUIT (TRENCHED)
- 4 2#8, 1#8 GROUND IN 1" CONDUIT
- 5 PROVIDE CAPPED 2" SCHEDULE 40 PVC CONDUIT 3'-0" FROM JUNCTION BOX AND MARK FOR FUTURE.

GENERAL NOTES

1. SEE ELECTRICAL WIRING SCHEMATIC DETAILS SHEETS E-3, E-4 & E-5.
2. PROVIDE #4 WIRES FOR RECEPTACLE CIRCUITS, #6 WIRE FOR LIGHTING CIRCUITS AND #8 FOR PHOTO-CELL CIRCUITS
3. NOT USED
4. 2" EXPANSION/DEFLECTION COUPLING, LOCATION SHALL BE APPROVED BY THE ENGINEER.
5. SEE BRIDGE DRAWINGS FOR ADDITIONAL DETAILS
6. The 2 Stainless Steel Junction boxes must be completely Watertight.

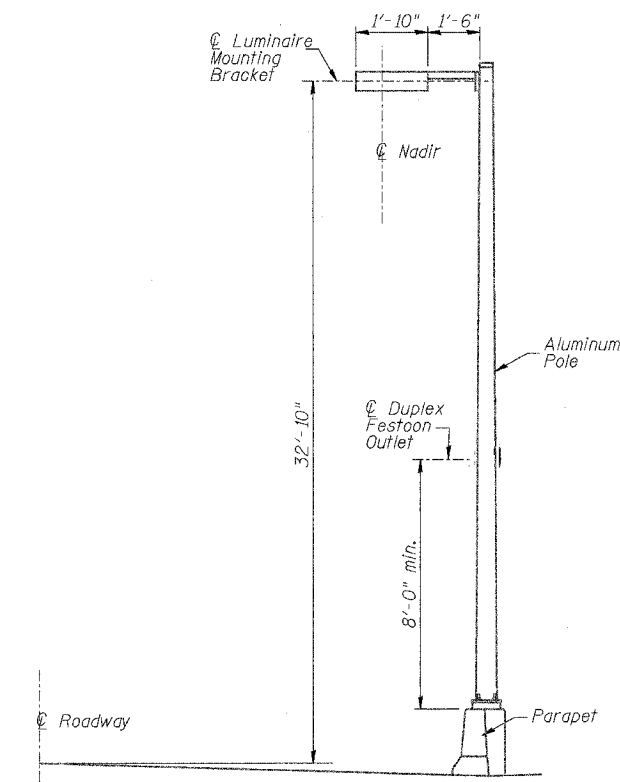


*** CONDUIT EXPANSION / DEFLECTION COUPLING DETAIL**

NOTE - Cost of conduit expansion/deflection coupling is included in the pay item for conduit.

*** NOTES:**

1. The barrel of the fitting shall be fully embedded in the concrete of one side of the expansion joint.
2. A cavity opening, if required, shall be a 75mm larger diameter than the deflection sleeve diameter and a maximum depth of half of the deflection sleeve length. The deflection fitting shall be centered in the opening and embedded in the concrete only up to the deflection fitting center.



TYPICAL LIGHT POLE SECTION
No Scale

LIGHTING PLAN
FAU ROUTE 6145 OVER
BNSF RAILROAD
SECTION 01-00590-00-BR (COUNTY)
LASALLE COUNTY
STATION 21+75.75
STR. NO. 050-8023

E-2

HUTCHISON ENGINEERING, INC.
 JACKSONVILLE & JOLIET, ILLINOIS
 Date: 3 /10 /2006