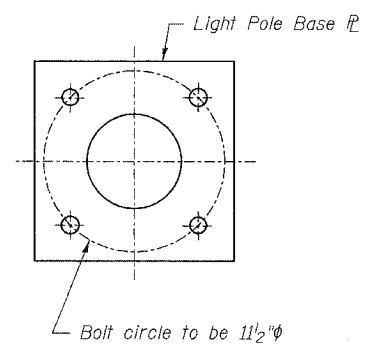


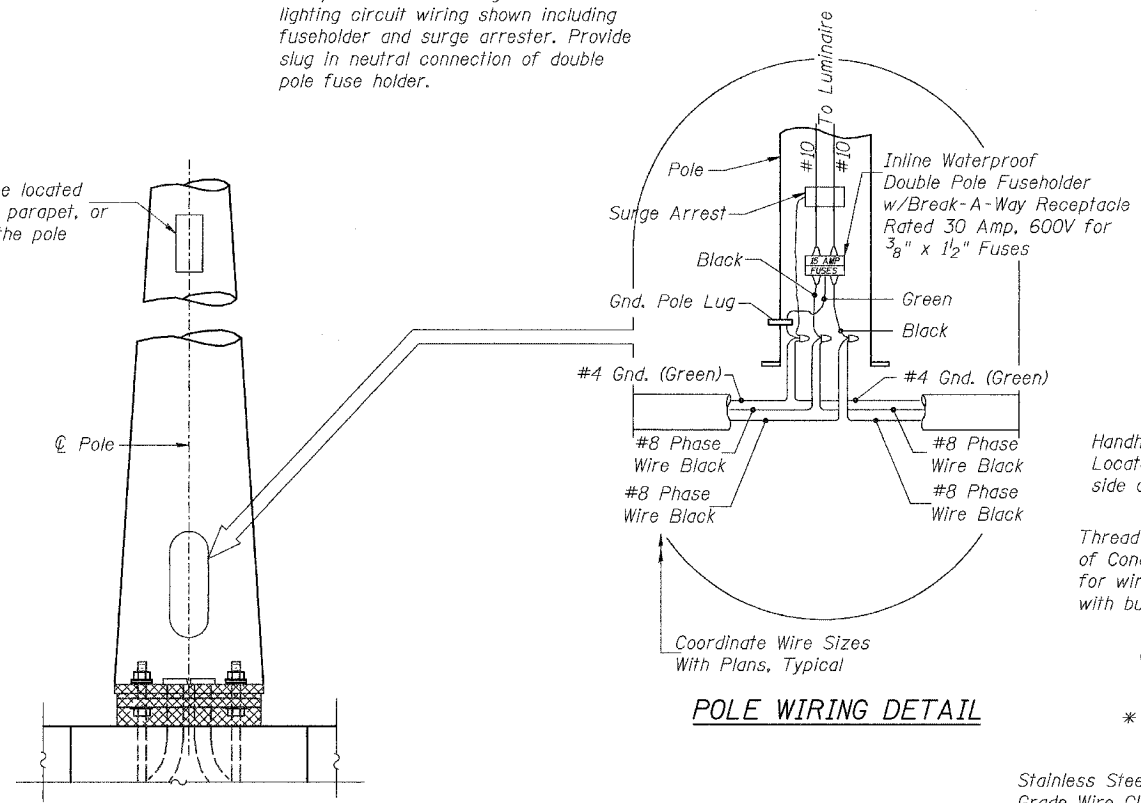
**LIGHT POLE ON PARAPET
PLAN VIEW**



**BASE PLATE
MOUNTING DETAIL**

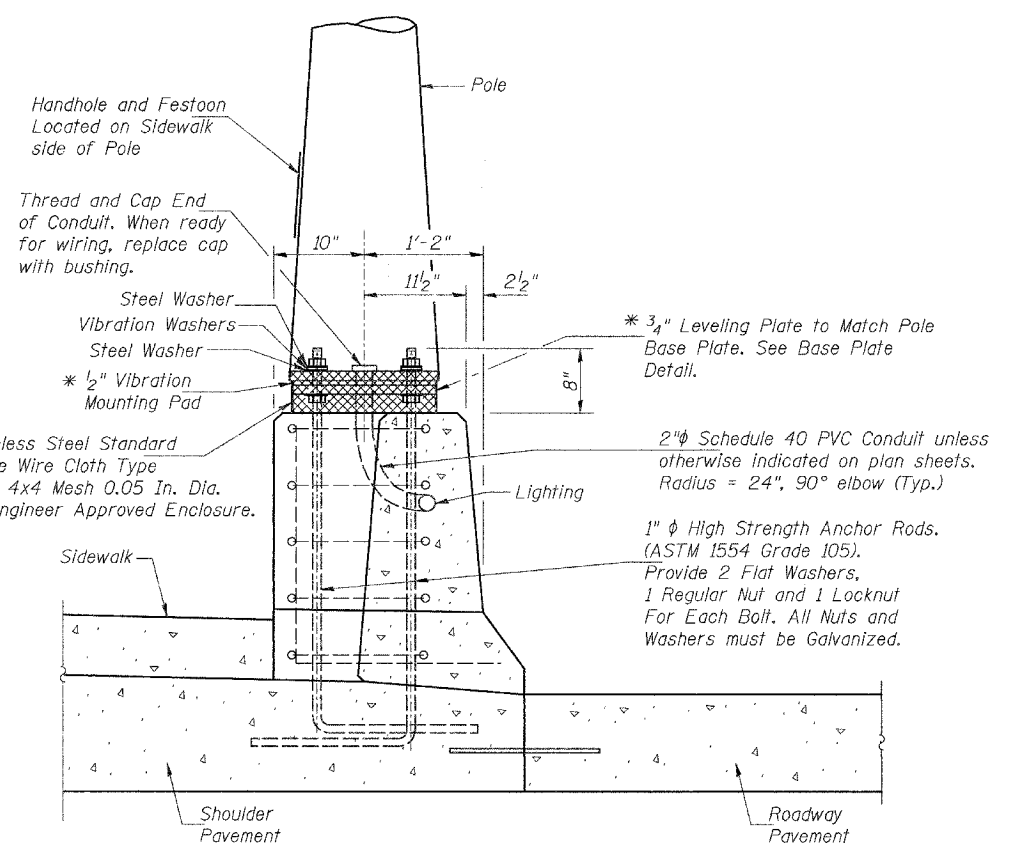
NOTE: Receptacle circuit wiring similar to lighting circuit wiring shown including fuseholder and surge arrester. Provide slug in neutral connection of double pole fuse holder.

Duplex Festoon, to be located 8" min. above top of parapet, or as recommended by the pole manufacturer.



POLE WIRING DETAIL

VIEW B-B



SECTION A-A

* Each Standard shall be provided with shock absorbing vibration pads, washers and leveling plate for its erection on the foundation as shown on the plans. The vibration pads and washers shall be of such size as recommended by the pole manufacturer. Cost shall be included with Light Pole.

**CONDUIT IN PARAPET DETAILS
FAU ROUTE 6145 OVER
BNSF RAILROAD
SECTION 01-00590-00-BR (COUNTY)
LASALLE COUNTY
STATION 21+75.75
STR. NO. 050-8023**

E-4

HUTCHISON ENGINEERING, INC.
JACKSONVILLE & JOLIET, ILLINOIS
Date: 3/10/2006