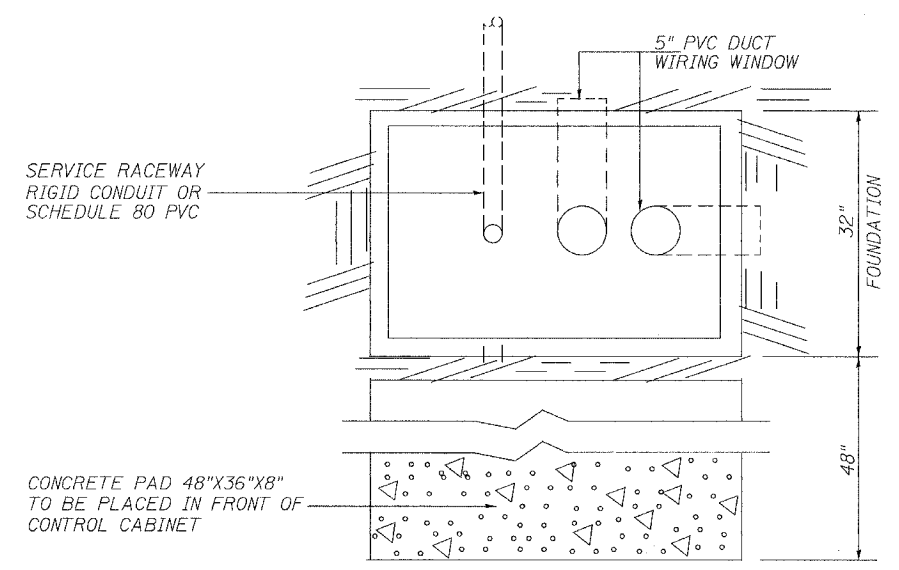


**CONTROLLER CABINET DETAIL**  
FRONT VIEW



**CONTROLLER CABINET BASE DETAIL**  
FRONT VIEW

\* THE COMPLETED CONTROLLER SHALL CONFORM TO THE REQUIREMENTS OUTLINED IN SEC. 1068.01 OF THE STANDARD SPECIFICATIONS FOR A SINGLE DOOR ENCLOSURE.

GENERAL NOTES

SERVICE TO CONTROLLER SHALL BE 120/240 VOLTS, SINGLE PHASE  
PROVIDE 1-2 POLE 20 AMP AND 1-1 POLE 20 AMP CIRCUIT BREAKERS FOR LIGHTING AND RECEPTACLE CIRCUITS. ALSO PROVIDE 1-20 AMP 2 POLE AND 2-20 AMP 1 POLE SPARE CIRCUIT BREAKERS.

WIRING IN CABINET SHALL BE SWITCHBOARD TYPE. WIRING TO RUN HORIZONTALLY AND VERTICALLY ALIGNED. LACE OR TIE WRAP WIRES FOR A NEAT AND PROFESSIONAL APPEARANCE.

ALL CONTROL EQUIPMENT TO BE U.L. LISTED.

LABEL PHASE, NEUTRAL AND GROUND TERMINALS.

UNDERGROUND SERVICE ENTRANCE - TOTAL SERVICE FROM TRANSFORMER TO CONTROLLER - NOT TO EXCEED 70 FEET (INCLUDES OVERHEAD AND UNDERGROUND SERVICE).

\*REFER TO ARTICLE 825 FOR GROUND ROD ACCESS WELL AND ARTICLE 1087.01 (c) FOR MATERIAL AND SIZE.

**CONTROLLER INSTALLATION**  
**FAU ROUTE 6145 OVER**  
**BNSF RAILROAD**  
**SECTION 01-00590-00-BR (COUNTY)**  
**LASALLE COUNTY**  
**STATION 21+75.75**  
**STR. NO. 050-8023**

E-6

HUTCHISON ENGINEERING, INC.  
JACKSONVILLE & JOLIET, ILLINOIS  
Date: 3 /10 /2006