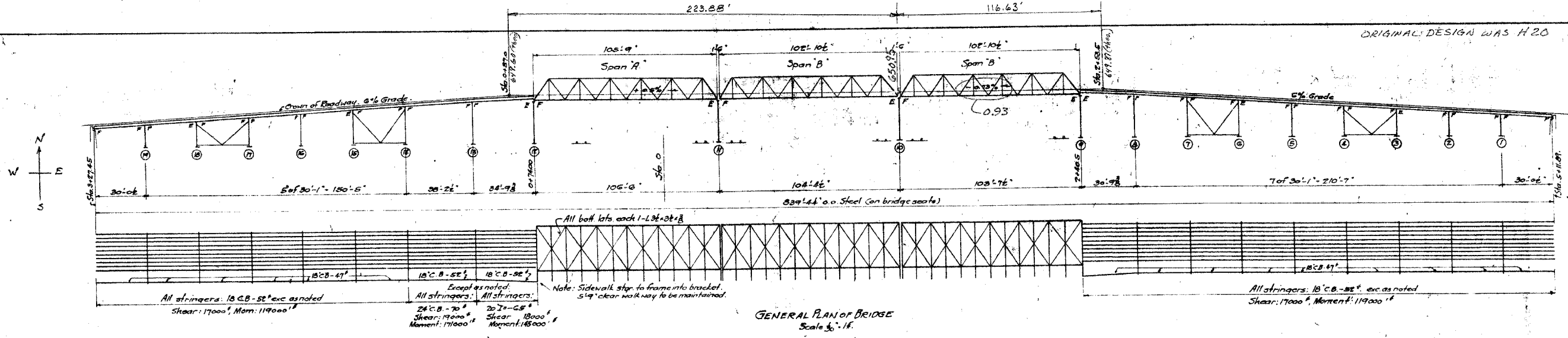
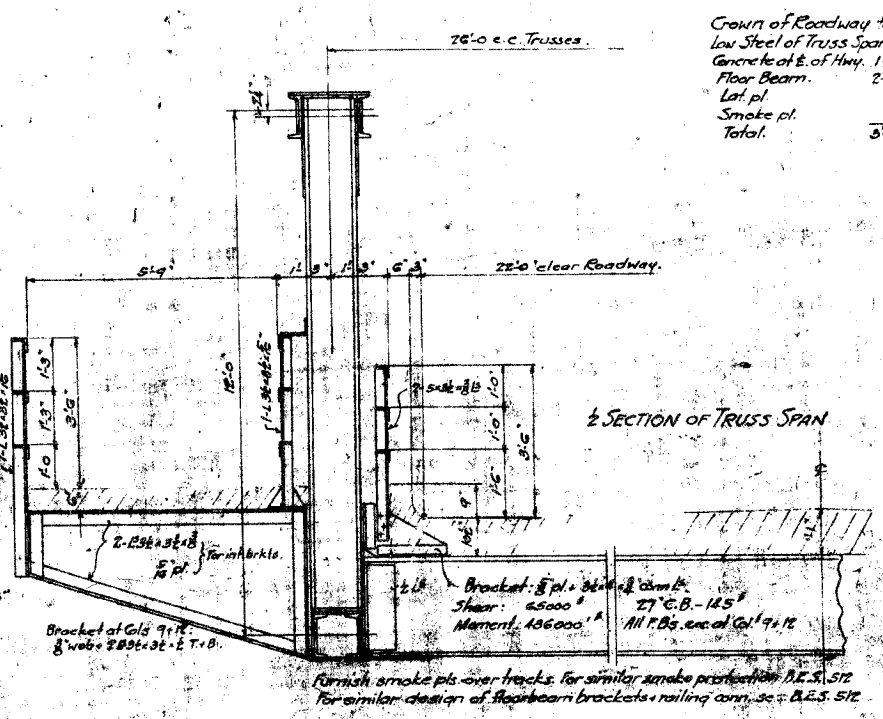
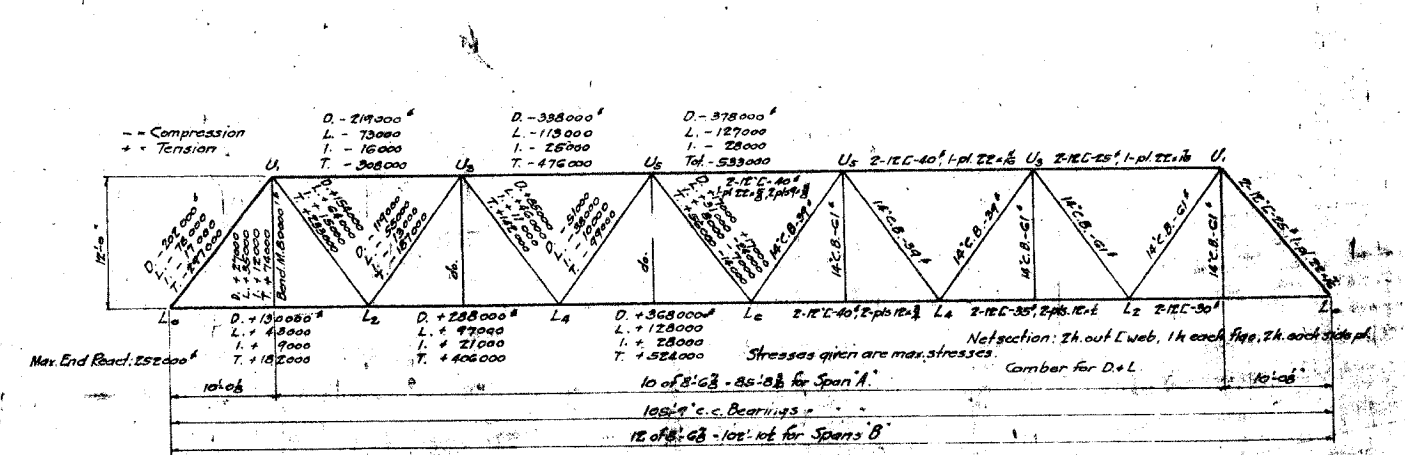


ORIGINAL DESIGN WAS H 20 (40,000)



BENTS 9, 10, 11 + 12

E. ABUT. CROWN EL. 634.40
E. ABUT. SEAT 631.88
W. ABUT. CROWN 635.20
W. ABUT. SEAT 632.68



General Notes.

Specifications: A.R.E.A. for H.V. Bridges 1929 modified by A.T. & S.F. Ry. System.

Dead Load ass'd: Rdwy. Slab: 3900 lb. per sq. ft. of span.
Sidew. 500
Steel 1600

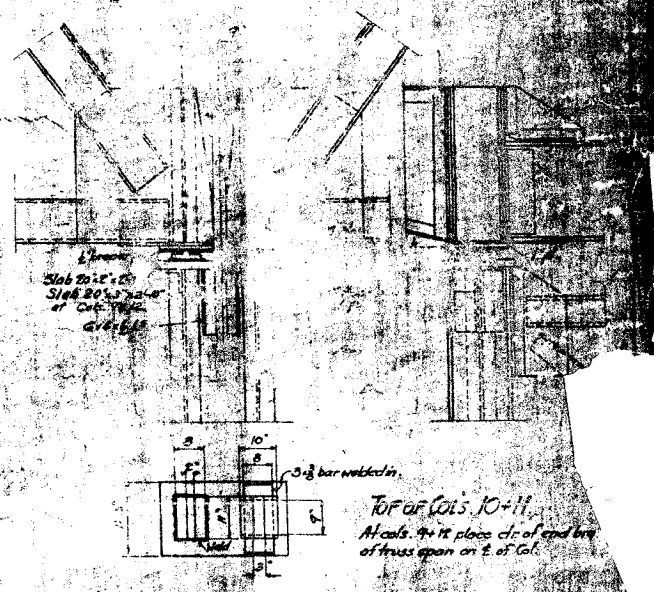
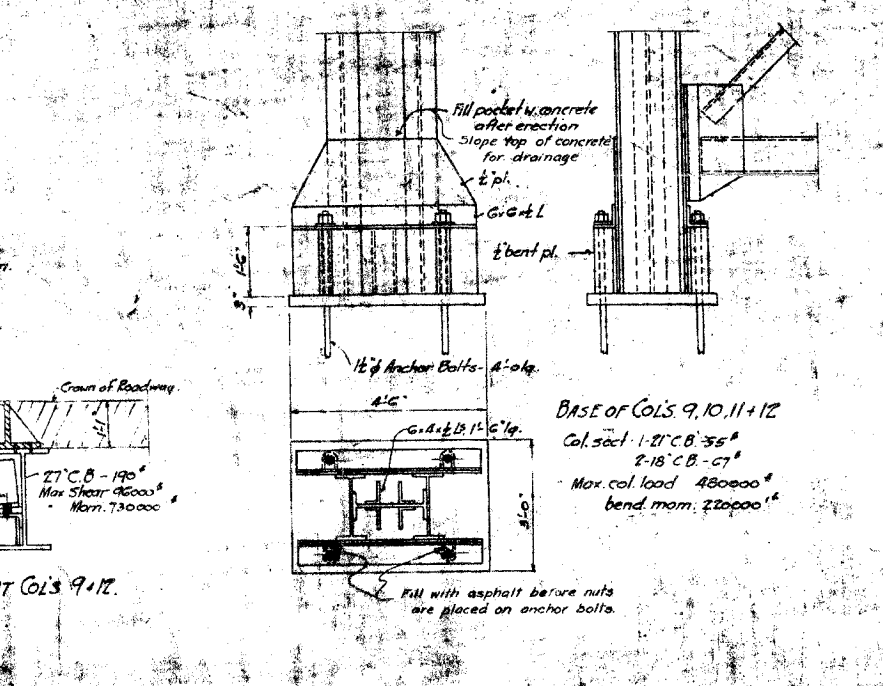
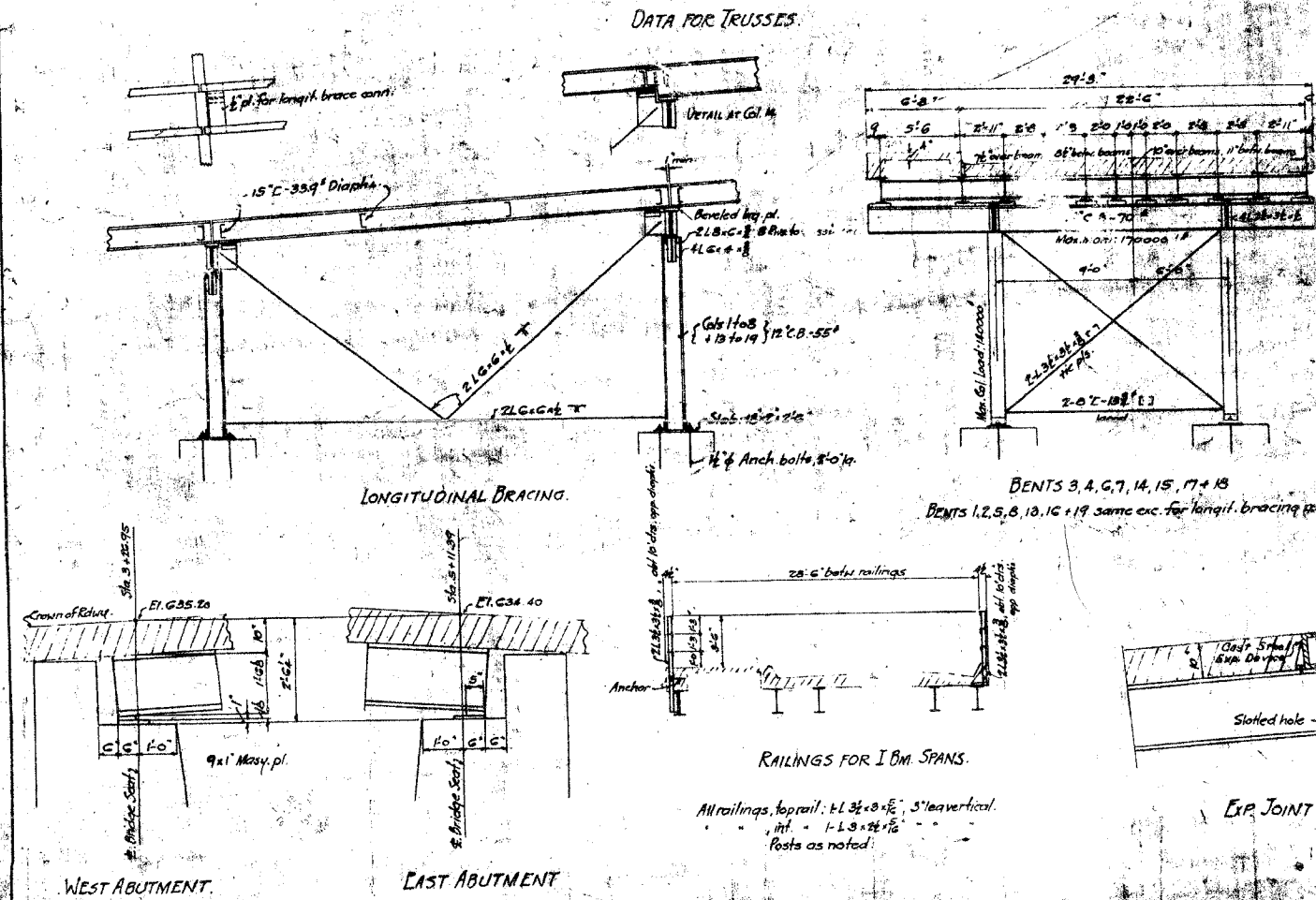
Live Load: H-20 loading for 14' 100' per ft. for sidew.

Rivets: 3/4"
For elevations of column footings + crown of roadway see A.T. & S.F. Ry. plans D.E.S. 2216

Workmanship: Materials + shop work as per A.T. & S.F. Ry. System Specifications for Material + Fabrication of Steel Bridges Form No. 101, Jan. 1930. Reamed Work.

Paint: One coat of boiled linseed oil. No lifting up paint or surfaces in contact. Other surfaces inaccessible after assembly. Two coats of red lead.

Reamings: As per Specifications, Form 1929, A. Std. Jan. 1930.



B.E.S. 2216
BROADWAY VIADUCT STREATOR, ILL.

A.T. & S.F. RY. SYSTEM.
2-LANE HIGHWAY VIADUCT.

Corrected by **R.A. Van Ness**
Bridge Engineer-System.

AMERICAN BRIDGE CO.
Eng. Dept. Chicago Office

Scale: 1/8" = 1'-0"
Date: June 1930