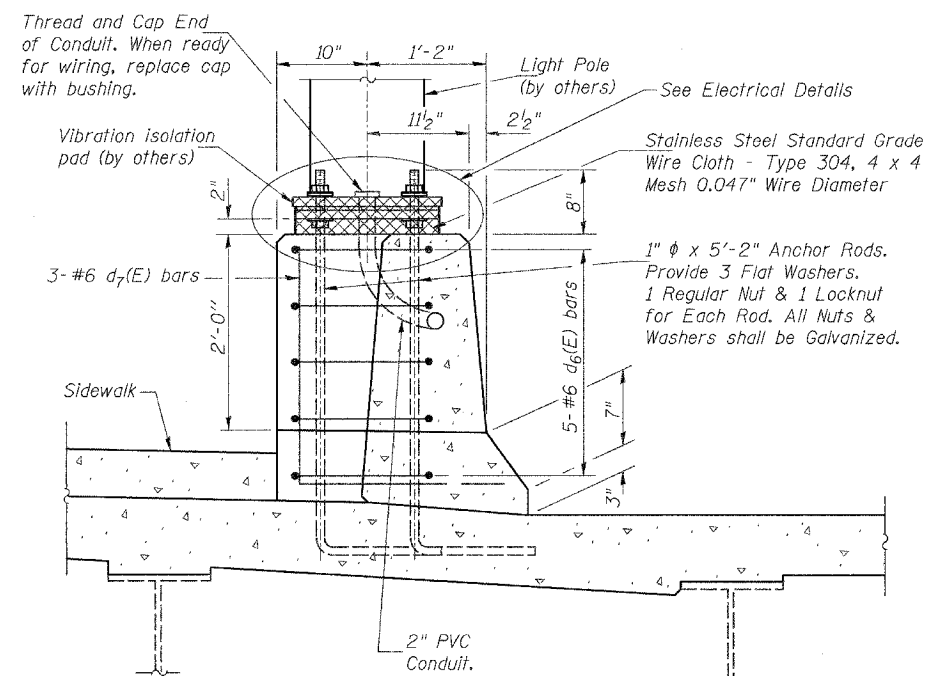


ROUTE NO.	SEC	COUNTY	TOTAL SHEETS	SHEET NO.
FAU 6145	*	LASALLE	168	91
FED. ROAD DIST. NO. 3	MILES	PROJECT		

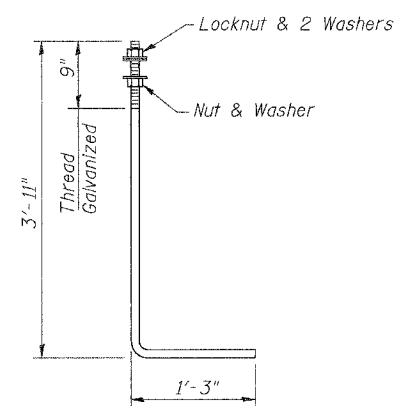
SHEET NO. 11
41 SHEETS

*01-00590-00-BR (County)

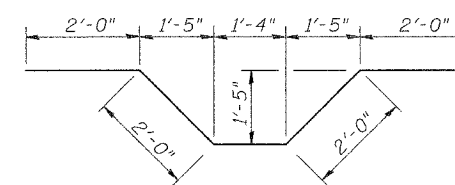
CONTRACT NO. 87293



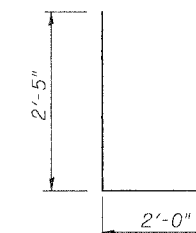
SECTION A-A



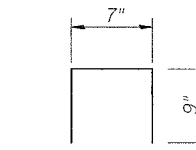
1" ϕ ANCHOR ROD
(ASTM F 1554 Grade 105)



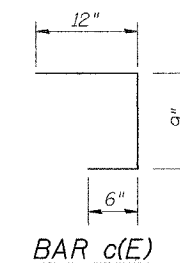
BAR d6(E)



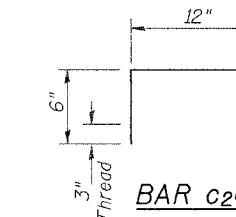
BAR d7(E)



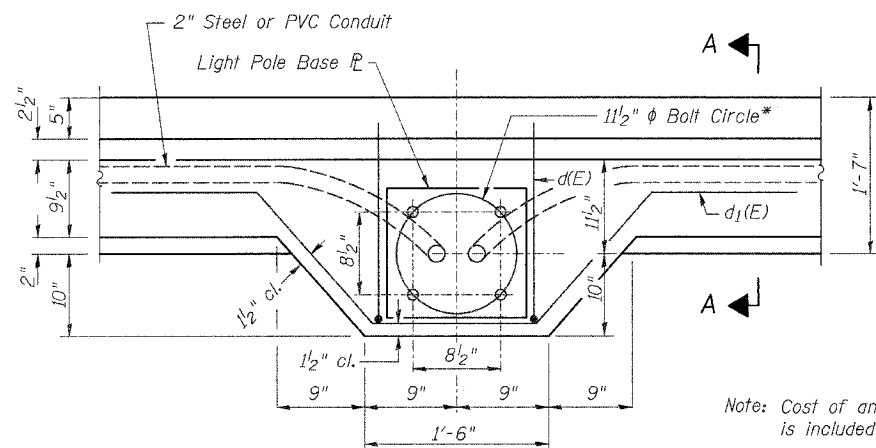
BAR d8(E)



BAR c(E)



BAR c2(E)



LIGHT POLE MOUNTING PLAN

* Match Light Pole Manufacturer Requirements.

LIGHT FIXTURE LOCATION

Location	Station	Offset
Structure	20+54.82	16.58' Rt.
Structure	21+75.74	16.58' Rt.
Structure	22+96.66	16.58' Rt.

DESIGNED	JOH
CHECKED	BRT
DRAWN	TRD
CHECKED	JOH

SUPERSTRUCTURE DETAILS
FAU ROUTE 6145 OVER
BNSF RAILROAD
SECTION 01-00590-00-BR (COUNTY)
LASALLE COUNTY
STATION 21+75.75
STR. NO. 050-8023

HUTCHISON ENGINEERING, INC.
JACKSONVILLE & JOLIET, ILLINOIS
Date: 3/10/2006