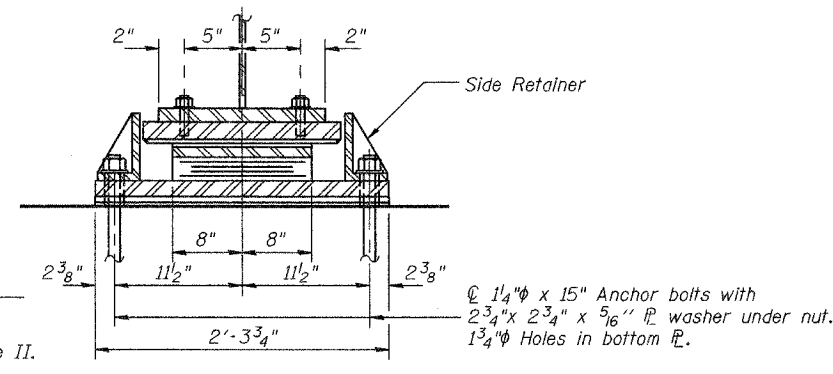
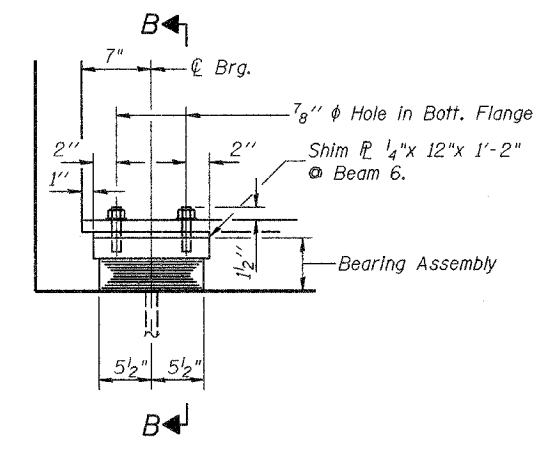


ELEVATION AT EAST ABUT.

TYPE II ELASTOMERIC EXP. BRG. EAST ABUT.

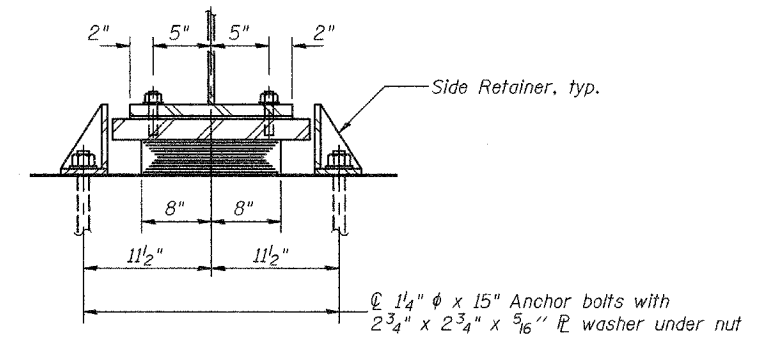


SECTION A-A

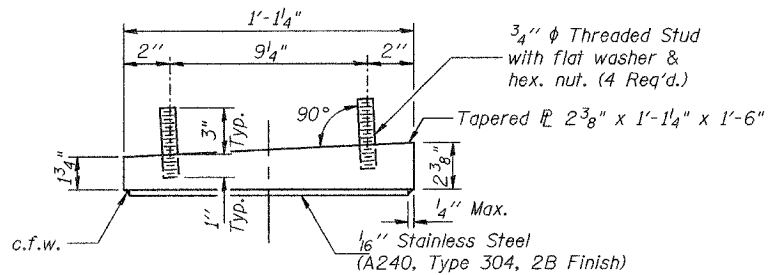


ELEVATION AT WEST ABUT.

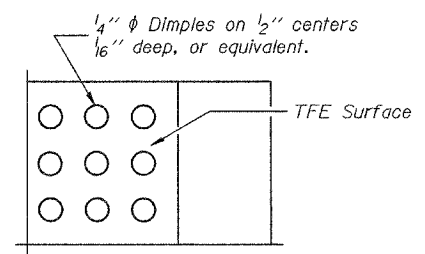
TYPE I ELASTOMERIC EXP. BRG. WEST ABUT.



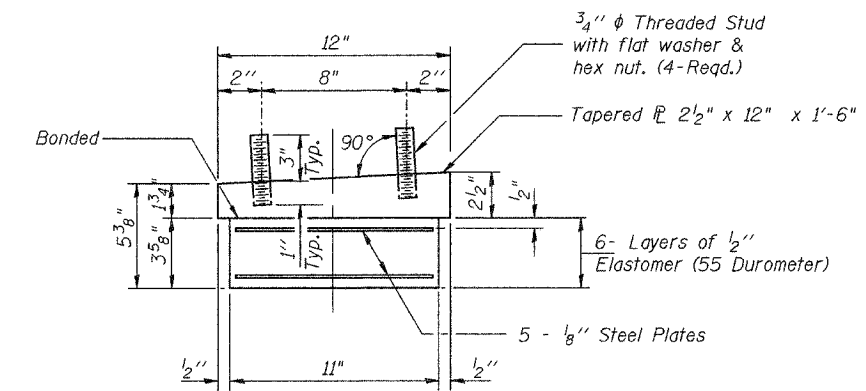
SECTION B-B



TOP BEARING ASSEMBLY EAST ABUT.

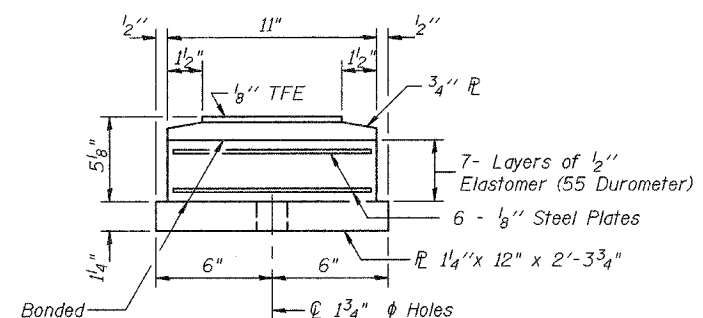


PLAN-TFE SURFACE EAST ABUT.

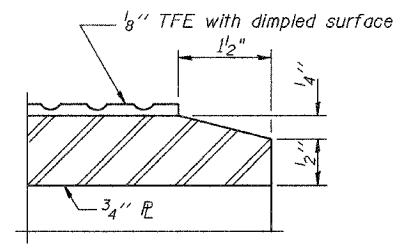


BEARING ASSEMBLY WEST ABUT.

Note: Shim plates shall not be placed under Bearing Assembly.



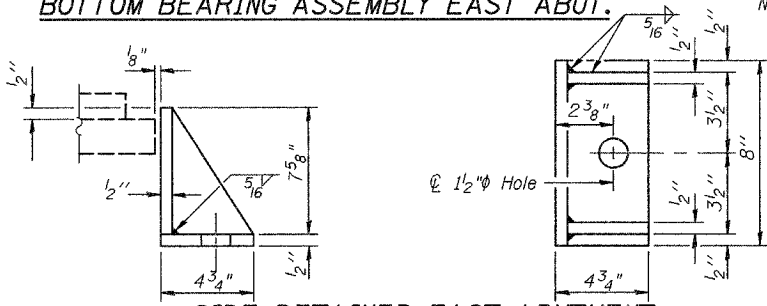
BOTTOM BEARING ASSEMBLY EAST ABUT.



SECTION THRU TFE EAST ABUT.

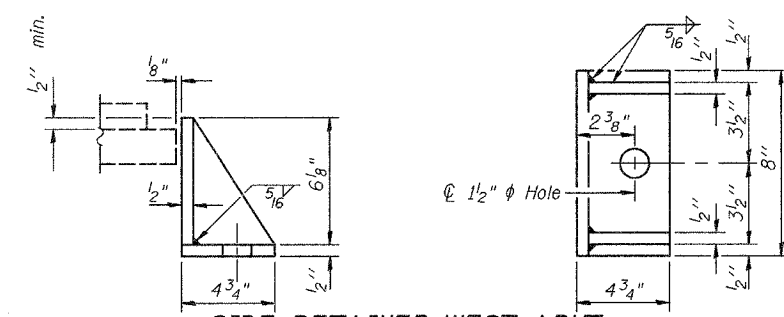
Note: The 1/8" TFE sheet shall be bonded directly to the top steel plate with a two-component, medium viscosity epoxy resin, conforming to the requirements of the Federal Specification MMM-A-134, Type I. The bond agent shall be applied on the full area of the contact surfaces.

Bonding of 1/8" TFE sheet during vulcanizing process will be permitted provided the process and method of adjusting assembly height is approved by the Engineer.



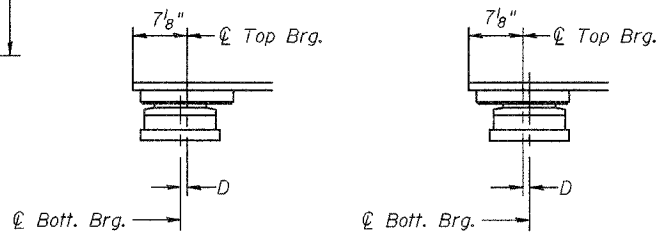
SIDE RETAINER EAST ABUTMENT

Equivalent rolled angle with stiffeners will be allowed in lieu of welded plates. Weight included with Structural Steel.



SIDE RETAINER WEST ABUT.

Equivalent rolled angle with stiffeners will be allowed in lieu of welded plates. Weight included with Structural Steel.



BELOW 50°F. ABOVE 50°F.
(Move bott. brg. away from fixed brg.) (Move bott. brg. toward fixed brg.)

SETTING ANCHOR BOLTS AT EXP. BRG. EAST ABUT.

D=1/8" per each 100' of expansion for every 15° temp. change from the normal temp. of 50°F.

BILL OF MATERIAL

Item	Unit	Total
Elastomeric Bearing Assembly Type I (West Abut.)	Each	6
Elastomeric Bearing Assembly Type II (East Abut.)	Each	6

BEARING DETAILS EAST & WEST ABUTMENTS
FAU ROUTE 6145 OVER
BNSF RAILROAD
SECTION 01-00590-00-BR (COUNTY)
LASALLE COUNTY
STATION 21+75.75
STR. NO. 050-8023

HUTCHISON ENGINEERING, INC.
 JACKSONVILLE & JOLIET, ILLINOIS
 Date: 3 /10 /2006

DESIGNED	JOH
CHECKED	BRT
DRAWN	TD
CHECKED	JOH