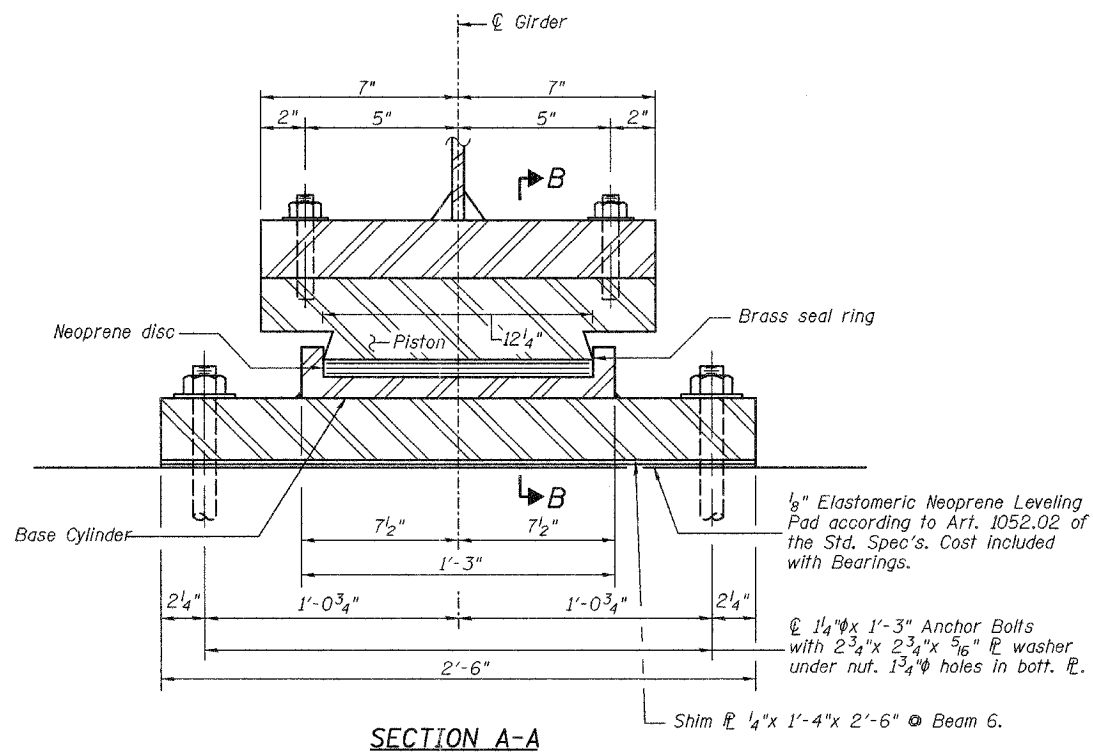
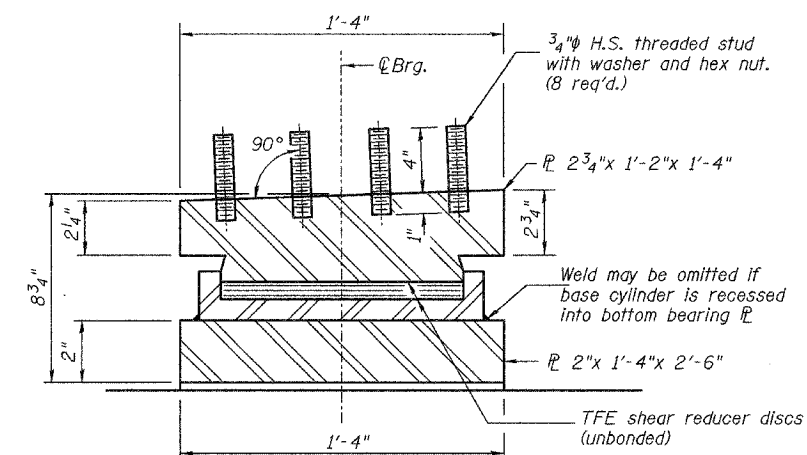


ELEVATION AT PIER 1



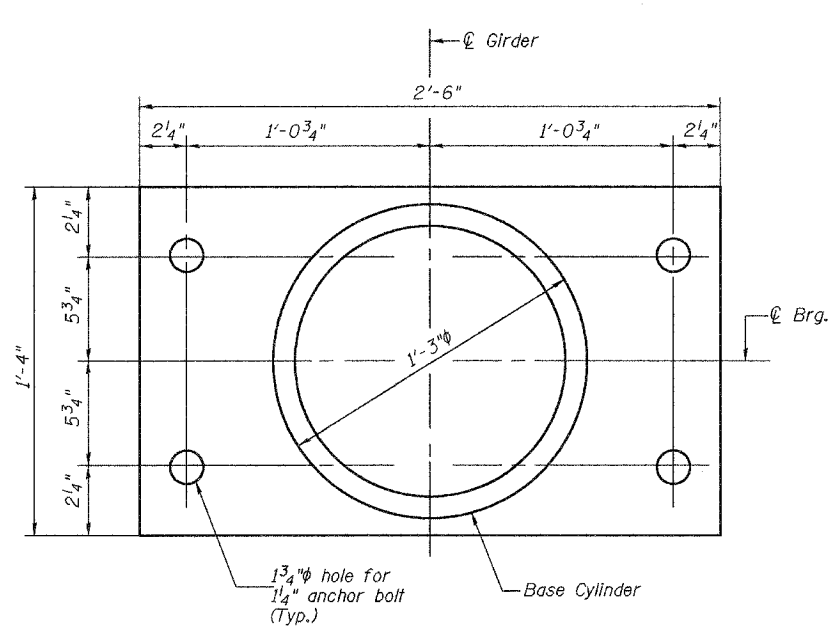
SECTION A-A

FIXED FLOATING BEARING

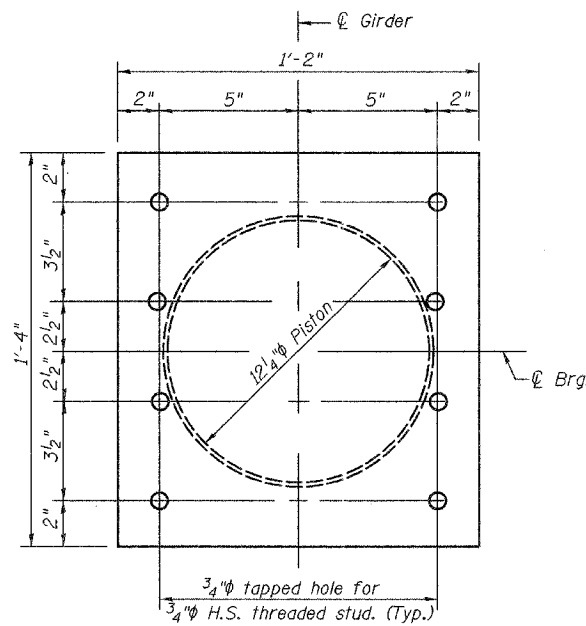


SECTION B-B

Notes: The plates of the Bearing Assembly shall be AASHTO M270, Grade 50W.
For anchor bolt installation details, see sheet 24 of 41.



BOTTOM BEARING φ AND BASE CYLINDER PLAN



TOP BEARING φ AND PISTON PLAN

BEARING DATA	
	Pier 1
Vertical design load	315 k

BILL OF MATERIAL

Item	Unit	Total
Floating Bearings, Fixed, 350 kip	Each	6

DESIGNED	JOH
CHECKED	BRT
DRAWN	TD
CHECKED	JOH

BEARING DETAILS PIER 1
FAU ROUTE 6145 OVER
BNSF RAILROAD
SECTION 01-00590-00-BR (COUNTY)
LASALLE COUNTY
STATION 21+75.75
STR. NO. 050-8023

HUTCHISON ENGINEERING, INC.
JACKSONVILLE & JOLIET, ILLINOIS
Date: 8 /10 /2006