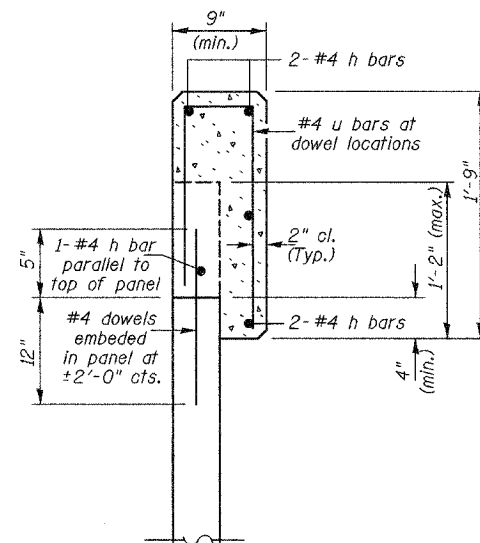


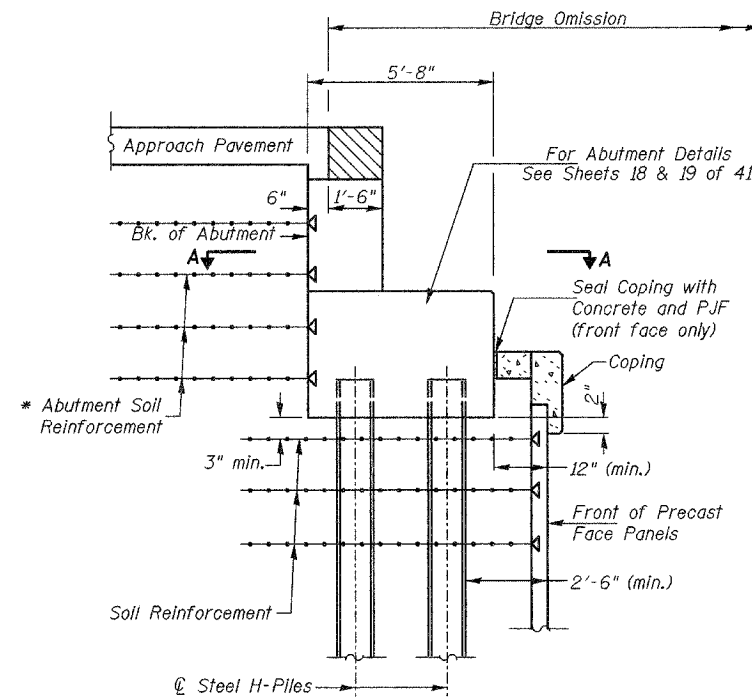
* Piles shall be driven prior to placement of the Reinforcement Select Fill and coated with Coal Tar Epoxy from the bottom of the select fill to 1" above the base of the abutment. The cost of the Coal Tar Epoxy Coating shall be included with the cost of the Mechanically Stabilized Earth Retaining Wall.

** The Porous Granular Embankment shall have a minimum Friction angle of 30 degrees. The contractor shall either drive the piles after excavation and prior to Porous Granular placement or limit the maximum aggregate size placed near the proposed piles to 0.5 inch to allow the pile penetration without damage.

SECTION AT ABUTMENT

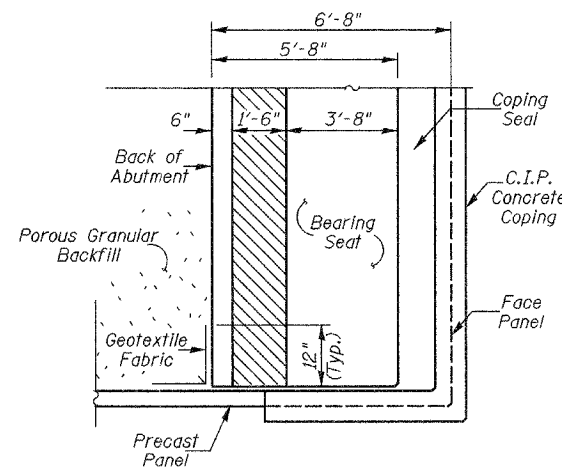


SECTION CAST-IN-PLACE COPING

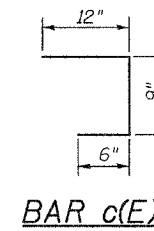


ABUTMENT CAP SECTION

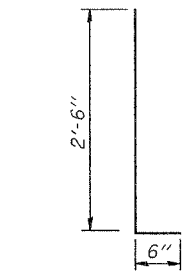
* The MSE wall supplier shall design the abutment reinforcement to resist a horizontal force of 1.3 k/ft of abutment.



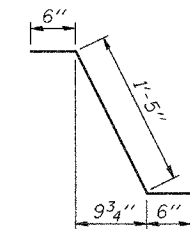
SECTION A-A



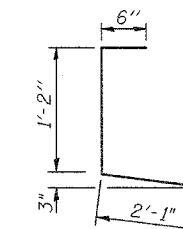
BAR c(E)



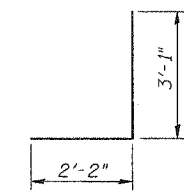
BARS d(E) & d2(E)



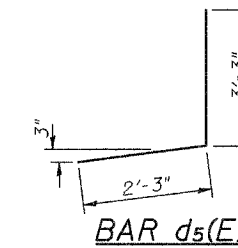
BAR d1(E)



BAR d3(E)



BAR d4(E)



BAR d5(E)

DESIGNED	JOH
CHECKED	BRT
DRAWN	TC & TD
CHECKED	JOH

ABUTMENT DETAILS
FAU ROUTE 6145 OVER
BNSF RAILROAD
SECTION 01-00590-00-BR (COUNTY)
LASALLE COUNTY
STATION 21+75.75
STR. NO. 050-8023

HUTCHISON ENGINEERING, INC.
 JACKSONVILLE & JOLIET, ILLINOIS

Date: 3 /10 /2006