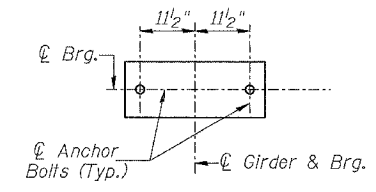
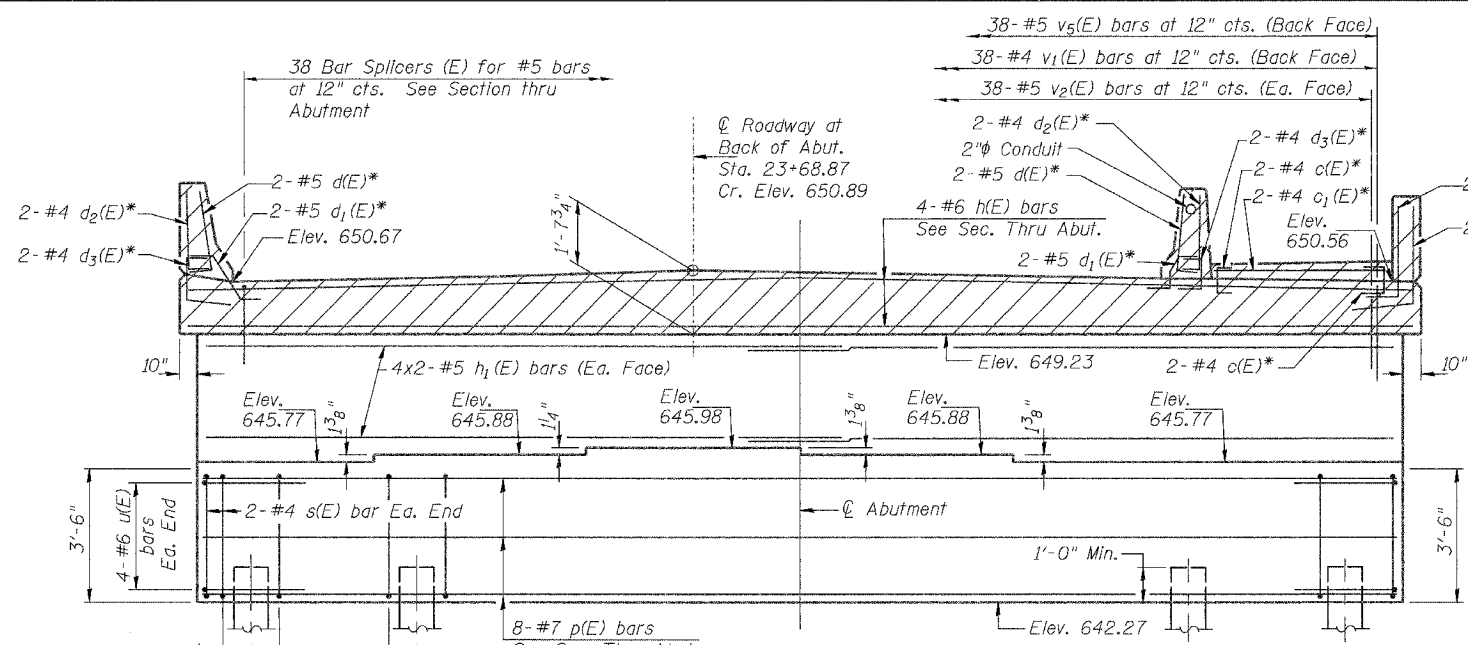


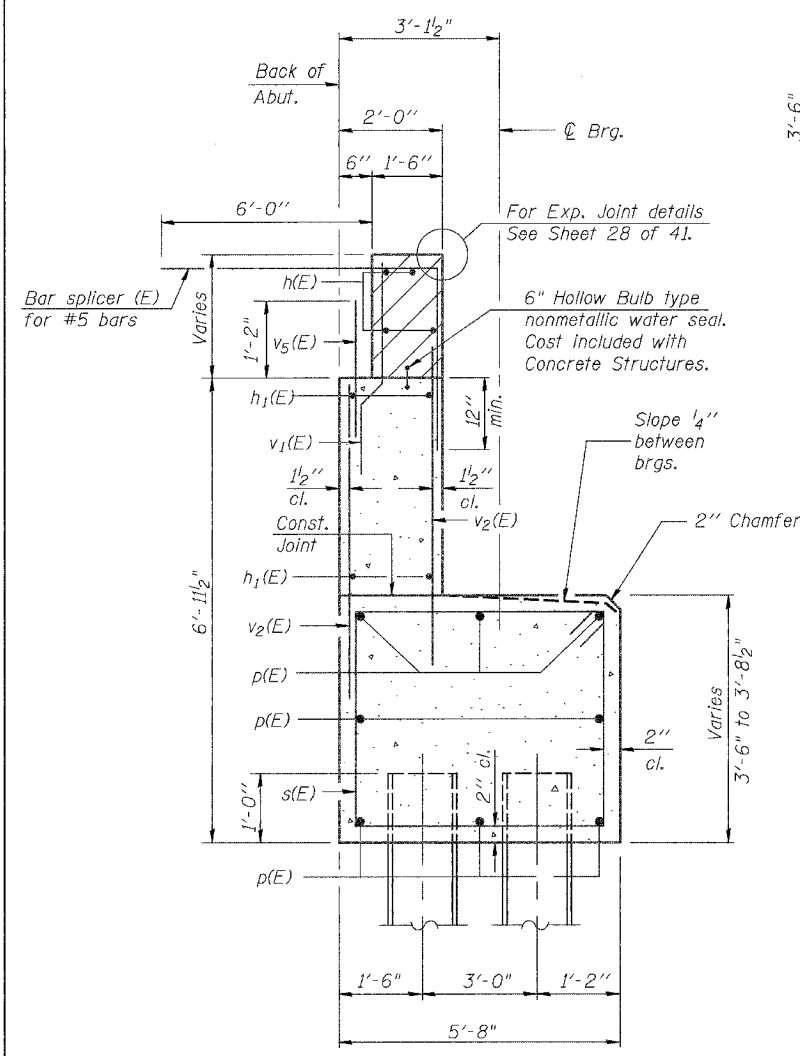
Notes: Hatched area to be poured after superstructure forms have been removed. Quantity of concrete included with Concrete Superstructure.
Space reinforcement in cap to miss anchor bolts.
Pour steps monolithically with cap.
Reinforcement bars designated (E) shall be epoxy coated.
Bars indicated thus 4x2 #5 etc. indicates 4 lines of bars with 2 lengths per line.

General Contractor shall coordinate with Electrical Contractor before embedding the conduits and junction boxes

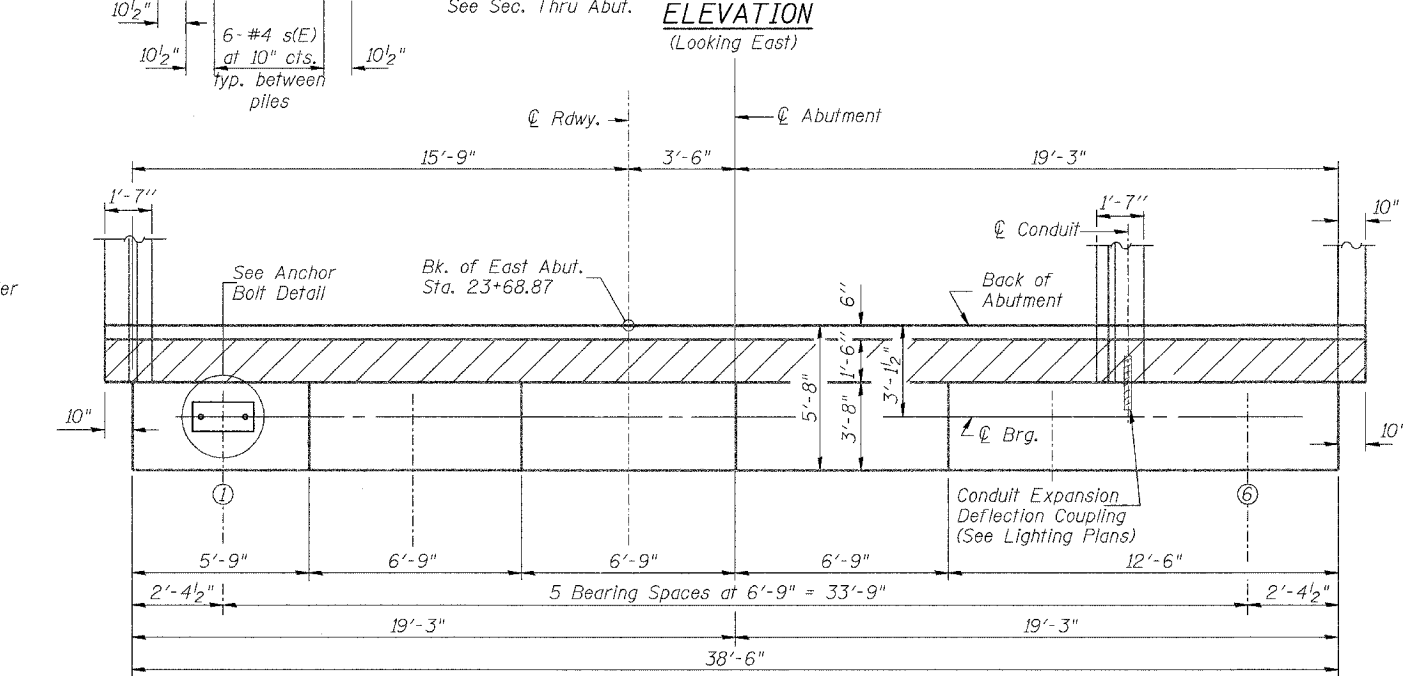


ANCHOR BOLT DETAIL

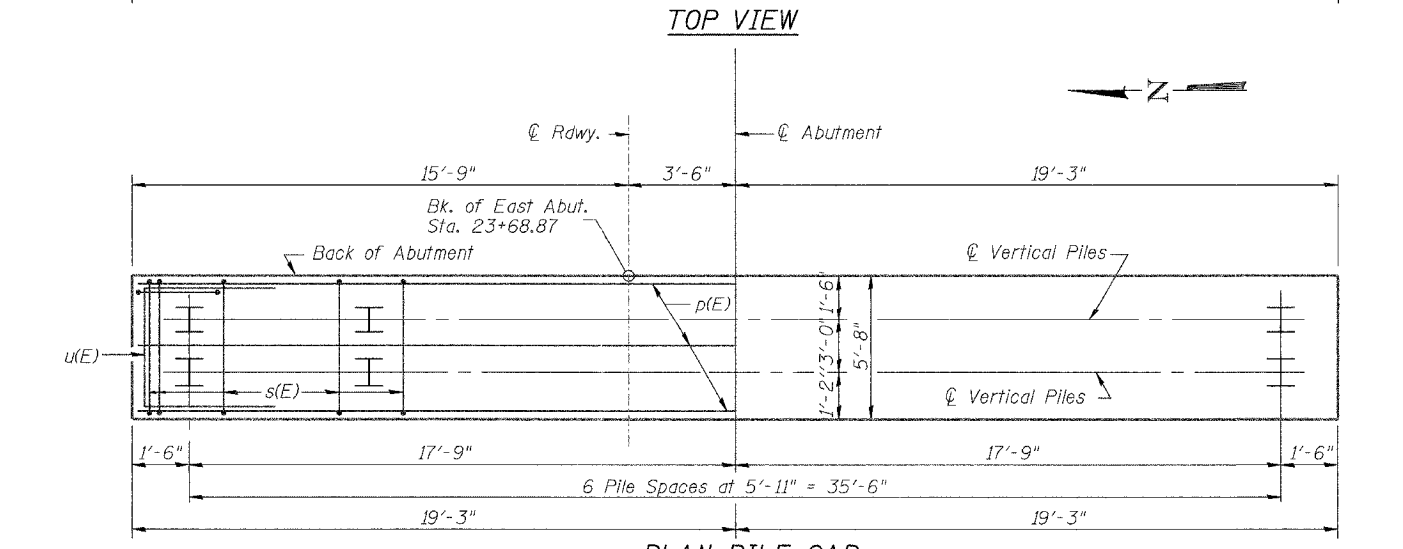
* d(E) thru d5(E), c(E) and c1(E) bars shall be cast into the hatched block



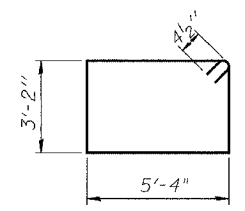
SEC. THRU ABUT.



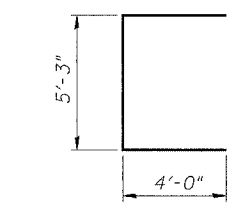
TOP VIEW



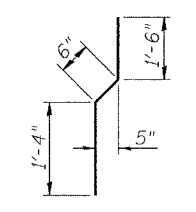
PLAN-PILE CAP



BARS s(E)



BAR u(E)



BAR v1(E)

MIN. BAR LAP
#5 = 2'-2"

EAST ABUTMENT
BILL OF MATERIAL

Bar	No.	Size	Length	Shape
c(E)	4	#4	2'-3"	U
c1(E)	2	#4	5'-8"	—
d(E)	4	#5	3'-0"	U
d1(E)	4	#5	2'-5"	U
d2(E)	4	#4	3'-0"	U
d3(E)	4	#4	3'-9"	U
d4(E)	2	#6	5'-3"	U
d5(E)	2	#4	5'-6"	U
h(E)	4	#6	38'-10"	—
h1(E)	16	#5	20'-4"	—
h6(E)	2	#5	20'-0"	—
p(E)	8	#7	38'-3"	—
s(E)	40	#4	17'-9"	U
u(E)	8	#6	13'-3"	U
v1(E)	38	#4	3'-4"	U
v2(E)	76	#5	6'-6"	U
v5(E)	38	#5	2'-6"	U
Concrete Structures		Cu. Yd.	38.6	
Reinforcement Bars, Epoxy Coated		Pound	2,650	
Furnishing Steel Piles HP 12x53		Foot	702	
Driving Steel Piles		Foot	702	
Test Pile Steel HP 12x53		Each	1	
Bar Splicers		Each	38	

For details of Bar Splicers, see sheet 25 of 41.

DESIGNED	JOH
CHECKED	BRT
DRAWN	TC
CHECKED	JOH

PILE DATA
Type: Steel H12x53
Capacity: Driven to Refusal
Est. Length: 54'
No. Required: 13 Plus 1 Test Pile

EAST ABUTMENT
FAU ROUTE 6145 OVER
BNSF RAILROAD
SECTION 01-00590-00-BR (COUNTY)
LASALLE COUNTY
STATION 21+75.75
STR. NO. 050-8023

HUTCHISON ENGINEERING, INC.
JACKSONVILLE & JOLIET, ILLINOIS
Date: 3/10/2006