

ROUTE NO.	SECTION	COUNTY	TOTAL SHEETS	SHEET NO.
T.R. 146	03-00295-00-BR	IROQUOIS	16	1
ROAD DIST.	ILLINOIS	VILLAGE OF CISSNA PARK		

CONTRACT NO. 87312

# STATE OF ILLINOIS

## DEPARTMENT OF TRANSPORTATION

### DIVISION OF HIGHWAYS

# PLANS FOR PROPOSED

# BRIDGE REPLACEMENT AND REHABILITATION PROGRAM

**SECTION 03-00295-00-BR**  
**IROQUOIS COUNTY**

SECTION 97-00005-00-BR  
VILLAGE OF CISSNA PARK  
PROJECT NO. CBROS-075(93)

T.R. ROUTE 146  
JOB NO. C-93-034-98

**INDEX OF SHEETS**

SHEET NO.	TITLE
1.	COVER SHEET
2.	SUMMARY OF QUANTITIES, GENERAL NOTES & TYPICAL SECTIONS
3.	PLAN AND PROFILE SHEET
4.-10.	BRIDGE PLANS
11	FOUNDATION BORINGS
12.-15.	STATION CROSS SECTIONS
16.	EROSION CONTROL PLAN

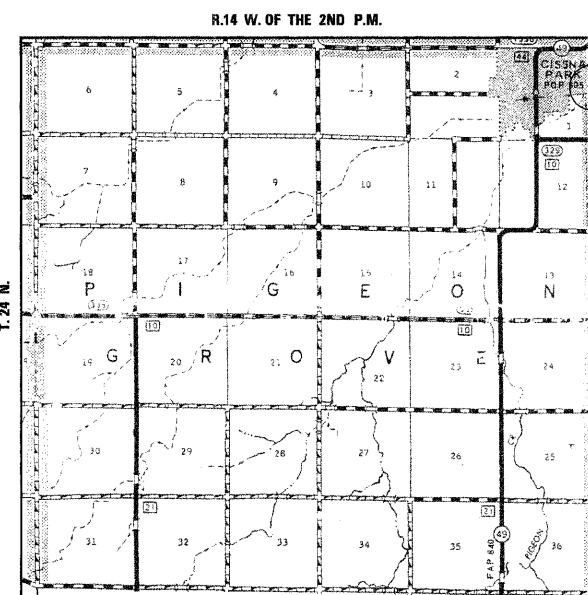
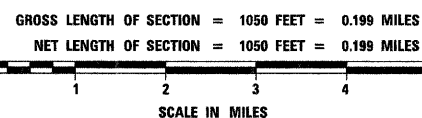
**STANDARDS:**

- 280001-02
- 515001-02
- 630001-06
- 631011-02
- 631026-02
- 702001-06
- BLR 21-6

**SCALES**



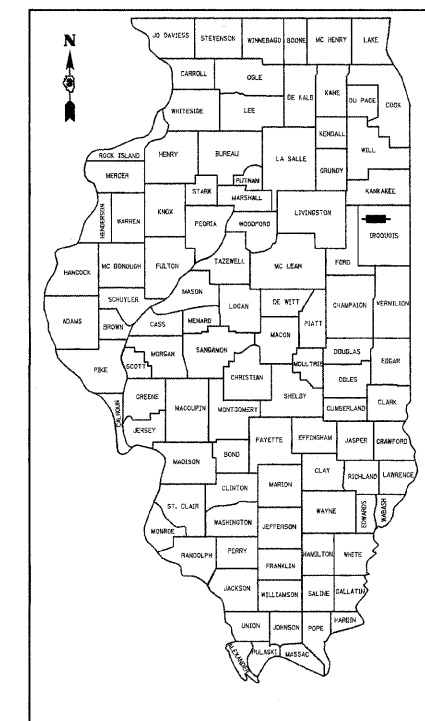
**LOCATION PLAN**



IMPROVEMENT BEGINS  
STA. 12+50

STA. 19+11 - SPECIAL BRIDGE DESIGN  
PRECAST PRESTRESSED CONCRETE DECK  
BEAM, 3 SPANS @ 36'-0", 53'-0", 36'-0"  
30'-0" ROADWAY, 20° SKEW  
EXISTING S.N. 038-4137  
PROPOSED S.N. 038-6401

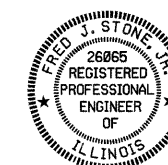
IMPROVEMENT ENDS  
STA. 23+00



LOCATION OF SECTION INDICATED THUS: [arrow pointing to Iroquois County]

CLASSIFICATION: LOCAL ROAD (RURAL)  
 DESIGN VOLUME: ADT 0-250  
 CURRENT ADT: 52 (2005)  
 DESIGN SPEED: 30 MPH

TOLL FREE JOINT UTILITY LOCATING  
 INFORMATION FOR EXCAVATORS (J.U.L.I.E.)  
 TELEPHONE NUMBER 1-800-892-0123



Fred J. Stone, Jr. 9-22-06  
 ILLINOIS PROFESSIONAL NO. 26065  
 EXPIRES 11-30-07

PASSED: 9-25 2006  
 VILLAGE PRESIDENT: [Signature]

APPROVED: September 25, 2006  
 COUNTY ENGINEER: [Signature]

PASSED: September 26 2006  
 DISTRICT THREE ENGINEER OF LOCAL ROADS & STREETS: [Signature]

RELEASING FOR BID  
 BASED ON LIMITED REVIEW: September 26 2006  
 DEPUTY DIRECTOR OF HIGHWAYS, REGION TWO ENGINEER: [Signature]

STATE OF ILLINOIS  
 DEPARTMENT OF TRANSPORTATION

4440 ASH GROVE  
 SPRINGFIELD, IL 62711  
 (217) 793-8600  
 www.fehr-graham.com

**FEHR-GRAHAM & ASSOCIATES, LLC**  
 ENGINEERING AND SCIENCE CONSULTANTS  
 FREDERICK S. ROCKFORD, L. ROBERT L. WOODS, III SPRINGFIELD, IL