

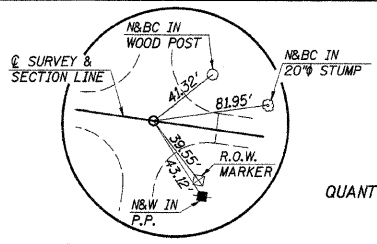
DATE	
BY	
SUBMITTED	
ALIGNED	
CHECKED	
DATE	
BY	
NOTE BOOK	
NO.	
DATE	
BY	
NOTE BOOK	
NO.	

DATE	
BY	
SUBMITTED	
GRADES CHECKED	
DATE	
BY	
NOTE BOOK	
NO.	
DATE	
BY	
NOTE BOOK	
NO.	

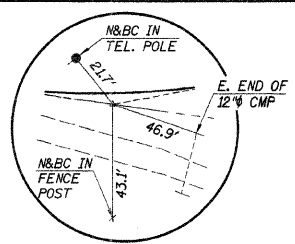
ROUTE	SECTION	COUNTY	TOTAL SHEETS	SHEET NO.
T.R. 146	03-00299	IRROQUOIS	16	3
ILLINOIS				

CONTRACT NO. 87312

N.W. 1/4, SEC. 6, T. 24 N., R. 13 W., 2ND P.M.  
**FRED HURLIMAN, ETAL.**  
**PARCEL 1**

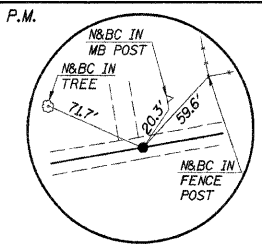


**PIPES TO BE REMOVED**  
 RT. STA. 18+14, 12" CMP, 35' LONG  
 QUANTITIES INCLUDED IN "EARTH EXCAVATION".

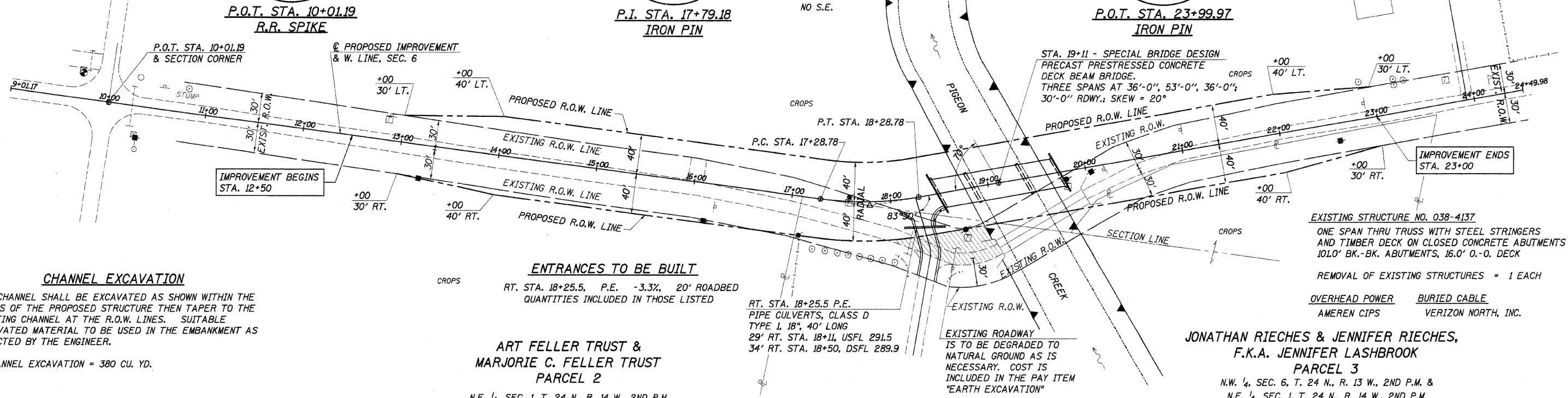


**ENTRANCES TO BE BUILT**  
 RT. STA. 18+25.5, P.E. -3.3%, 20' ROADBED  
 QUANTITIES INCLUDED IN THOSE LISTED

**CURVE DATA**  
 P.I. STA. 17+79.18  
 $\Delta = 17^\circ 37' 45''$   
 $D = 17^\circ 37' 45''$   
 $T = 50.40'$   
 $R = 325.01'$   
 $L = 100.00'$   
 $E = 3.88'$   
 NO S.E.



**PIPES TO BE REMOVED**  
 RT. STA. 23+14, 12" CMP, 35' LONG  
 QUANTITIES INCLUDED IN "EARTH EXCAVATION".



**CHANNEL EXCAVATION**  
 THE CHANNEL SHALL BE EXCAVATED AS SHOWN WITHIN THE LIMITS OF THE PROPOSED STRUCTURE THEN TAPER TO THE EXISTING CHANNEL AT THE R.O.W. LINES. SUITABLE EXCAVATED MATERIAL TO BE USED IN THE EMBANKMENT AS DIRECTED BY THE ENGINEER.  
 CHANNEL EXCAVATION = 380 CU. YD.

**ART FELLER TRUST & MARJORIE C. FELLER TRUST PARCEL 2**  
 N.E. 1/4, SEC. 1, T. 24 N., R. 14 W., 2ND P.M.

**JONATHAN RIECHES & JENNIFER RIECHES, F.K.A. JENNIFER LASHBROOK PARCEL 3**  
 N.W. 1/4, SEC. 6, T. 24 N., R. 13 W., 2ND P.M. & N.E. 1/4, SEC. 1, T. 24 N., R. 14 W., 2ND P.M.

EARTH EXCAVATION = 1796 C.Y.  
 SUITABLE CHANNEL EXCAVATION = 190 C.Y.  
 FURNISHED EXCAVATION = 262 C.Y.  
 EMBANKMENT = 1751 C.Y. (FOR INFORMATION ONLY)

