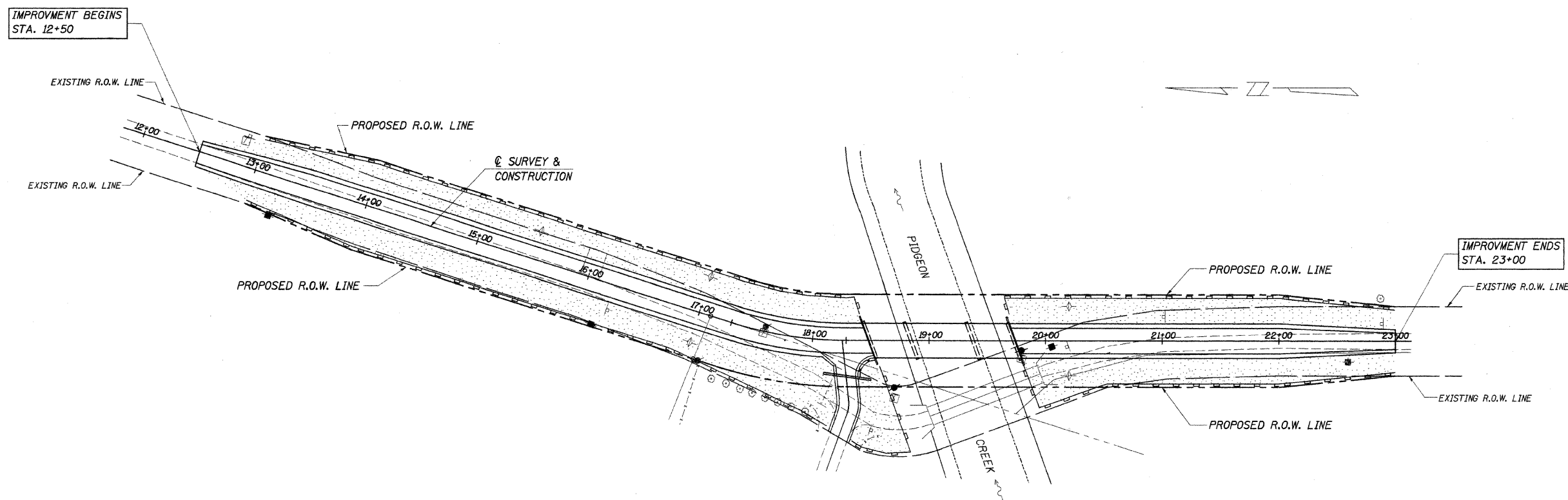


ROUTE NO.	SECTION	COUNTY	TOTAL SHEETS	SHEET NO.
T.R. 146	03-00295-00-BR	IROQUOIS	16	15
ROAD DIST.	ILLINOIS	VILLAGE OF CISSNA PARK		

CONTRACT NO. 87312

DESCRIPTION OF INTENDED SEQUENCE OF MAJOR CONSTRUCTION ACTIVITIES WHICH WILL DISTURB EARTH AND LEAD TO POSSIBLE EROSION FOR MAJOR PORTIONS OF THE CONSTRUCTION SITE:

1. PLACEMENT OF PERIMETER EROSION CONTROL FENCE PRIOR TO THE COMMENCEMENT OF ANY ROAD OR BRIDGE WORK. SEE STD. 280001.
2. REMOVAL OF EXISTING STRUCTURE.
3. CONSTRUCTION OF THE REPLACEMENT STRUCTURE.
4. PLACEMENT OF ROADWAY EMBANKMENT TO RAISE THE ROADWAY TO THE PROPOSED GRADE.
5. DRAINAGE STRUCTURES, INCLUDING DITCHES, WILL BE INSTALLED BEFORE AND/OR DURING THE COMPLETION OF THE EMBANKMENT.
6. PLACEMENT AND MAINTENANCE OF TEMPORARY EROSION CONTROL.
7. PLACEMENT OF PERMANENT EROSION CONTROL.
8. REMOVAL AND PROPER CLEAN UP OF TEMPORARY EROSION CONTROL.
9. FINAL GRADING, PLACING AGGREGATE AND OTHER MISCELLANEOUS ITEMS.



TEMPORARY EROSION CONTROL:

- PERIMETER EROSION BARRIER
- ◆ TEMPORARY DITCH CHECK

PERMANENT EROSION CONTROL:

- SEEDING CLASS 2, FERTILIZERS, & MULCH, METHOD 2

TEMPORARY DITCH CHECKS

LT. STA. 15+50 = 1 EACH
 LT. & RT. STA. 17+00 = 2 EACH
 LT. & RT. STA. 20+20 = 2 EACH
 TOTAL = 5 EACH

BILL OF MATERIAL

ITEM	UNIT	QUANTITY
TEMPORARY EROSION CONTROL SEEDING	POUND	160
TEMPORARY DITCH CHECKS	EACH	5
PERIMETER EROSION BARRIER	FOOT	1860

THE ABOVE QUANTITIES ARE ESTIMATES ONLY. ACTUAL QUANTITIES FOR EROSION CONTROL WILL BE DETERMINED BY THE ENGINEER IN THE FIELD AND THERE WILL BE NO ADJUSTMENT IN ANY PRICE DUE TO A CHANGE IN PLAN QUANTITY.

EROSION CONTROL PLAN

SECTION 03-00295-00-BR
 VILLAGE OF CISSNA PARK
 IROQUOIS COUNTY
 STATION 19+11

4440 ASH GROVE
 SPRINGFIELD, IL. 62711
 (217) 793-8600
 www.fehr-graham.com

FEHR-GRAHAM & ASSOCIATES, LLC
 ENGINEERING AND SCIENCE CONSULTANTS
 PREPARED BY: ROBERTO L. RODRIGUEZ, P.E. SPRINGFIELD, IL.

JOB NO.: 9709
 FILE: EROSION.DGN
 DATE: 03/29/05