

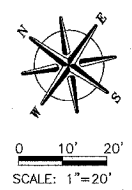
B.M. #1 COTTON SPINDEL IN FIRST POWER POLE (±39') WEST OF STONE QUARRY ROAD AND CHERRY VALLEY ROAD INTERSECTION. ELEV. 780.14

B.M. #2 CHISELED SQUARE TOP OF NORTHEAST WINGWALL OF EXISTING BRIDGE. ELEV. 784.51

B.M. #3 COTTON SPINDEL IN FIRST POWER POLE WEST OF BRIDGE. ELEV. 782.90

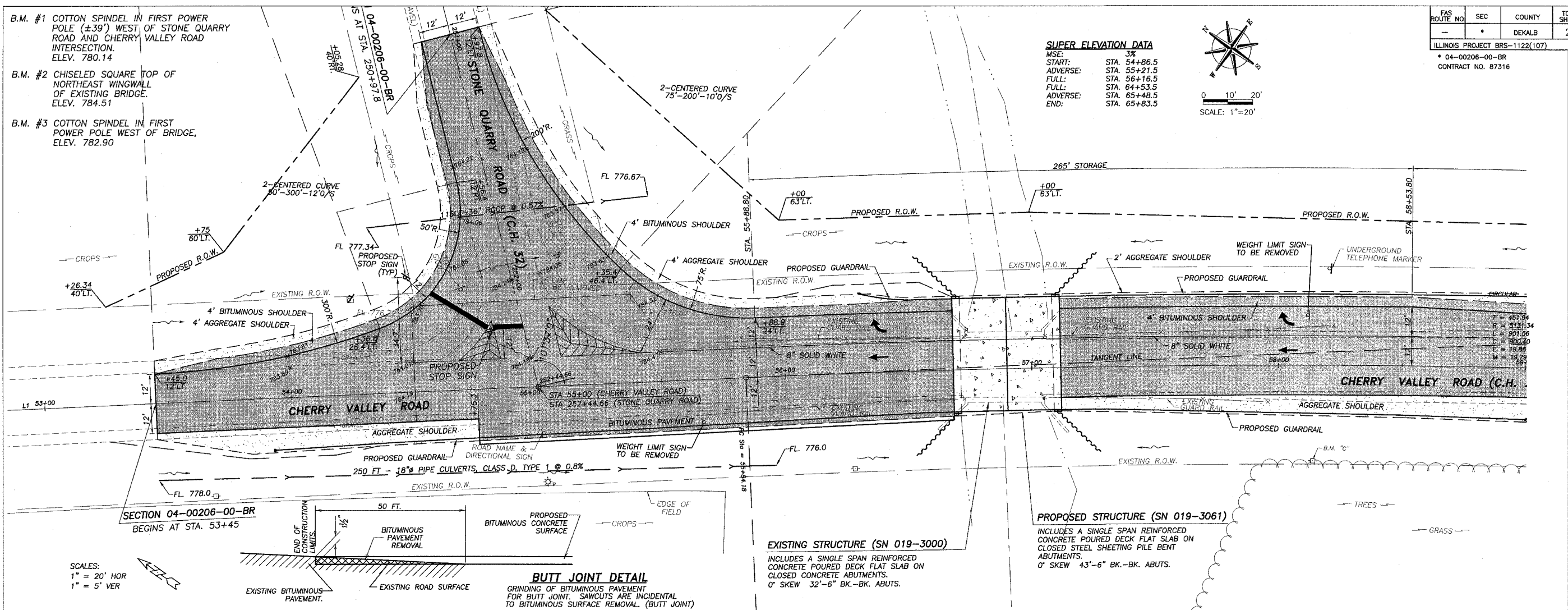
**SUPER ELEVATION DATA**

MSE:	3%
START:	STA. 54+86.5
ADVERSE:	STA. 55+21.5
FULL:	STA. 56+16.5
ADVERSE:	STA. 64+53.5
END:	STA. 65+83.5



FAS ROUTE NO.	SEC	COUNTY	TOTAL SHEETS	SHEET NO.
04-00206-00-BR		DEKALB	21	4

ILLINOIS PROJECT BRS-1122(107)  
 \* 04-00206-00-BR  
 CONTRACT NO. 87316

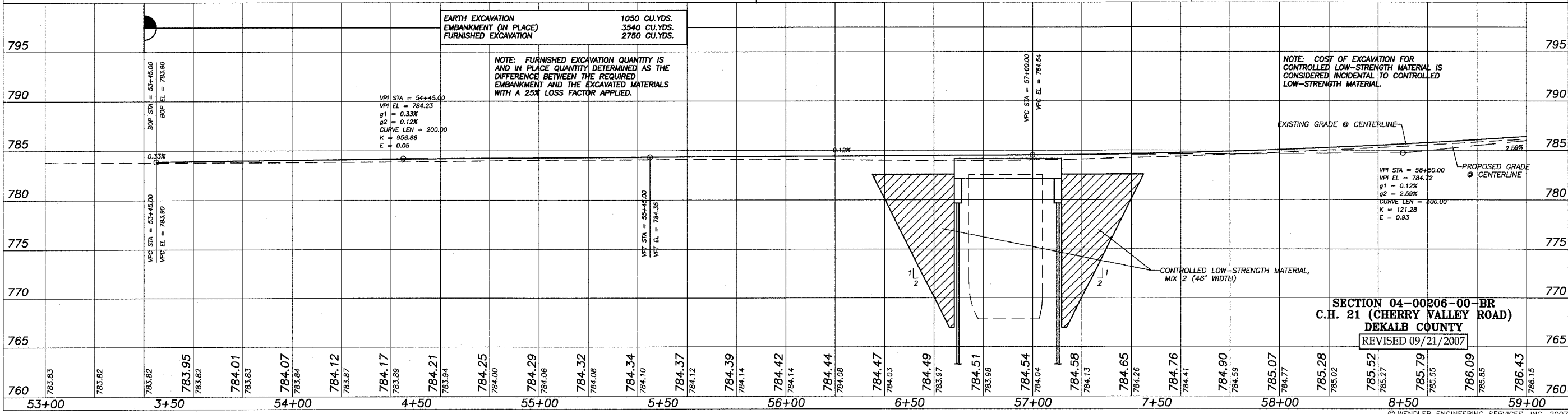


SCALES:  
 1" = 20' HOR  
 1" = 5' VER

**BUTT JOINT DETAIL**  
 GRINDING OF BITUMINOUS PAVEMENT FOR BUTT JOINT. SAWCUTS ARE INCIDENTAL TO BITUMINOUS SURFACE REMOVAL. (BUTT JOINT)

**EXISTING STRUCTURE (SN 019-3000)**  
 INCLUDES A SINGLE SPAN REINFORCED CONCRETE POURED DECK FLAT SLAB ON CLOSED CONCRETE ABUTMENTS.  
 0' SKEW 32'-6" BK.-BK. ABUTS.

**PROPOSED STRUCTURE (SN 019-3061)**  
 INCLUDES A SINGLE SPAN REINFORCED CONCRETE POURED DECK FLAT SLAB ON CLOSED STEEL SHEETING PILE BENT ABUTMENTS.  
 0' SKEW 43'-6" BK.-BK. ABUTS.



NOTE: COST OF EXCAVATION FOR CONTROLLED LOW-STRENGTH MATERIAL IS CONSIDERED INCIDENTAL TO CONTROLLED LOW-STRENGTH MATERIAL.

NOTE: FURNISHED EXCAVATION QUANTITY IS AND IN PLACE QUANTITY DETERMINED AS THE DIFFERENCE BETWEEN THE REQUIRED EMBANKMENT AND THE EXCAVATED MATERIALS WITH A 25% LOSS FACTOR APPLIED.

**SECTION 04-00206-00-BR**  
**C.H. 21 (CHERRY VALLEY ROAD)**  
**DEKALB COUNTY**  
 REVISED 09/21/2007

698 TIMBER CREEK ROAD - P.O. BOX 486 - DIXON, IL 61021 - 815-288-2261  
 28 E. MARION - SUITE 3 - PRINCETON, IL 61356 - 815-679-4731  
 1778 WEST STATE ST. - SYCAMORE, IL 60178 - 815-895-5008  
 804 FREEMONT RD. - STERLING, IL 61081 - (815) 626-4428  
 E-MAIL: info@wendlereng.com

**WENDLER ENGINEERING SERVICES, INC.**  
 Structural & Civil Engineers - Land Surveying - Environmental Services  
 Illinois Professional Design Firm No. 184-000848

1968 - 2007  
 AFTER  
**39**  
 YEARS  
 WE'RE STILL  
 "Turning Ideas  
 - Into Reality!"