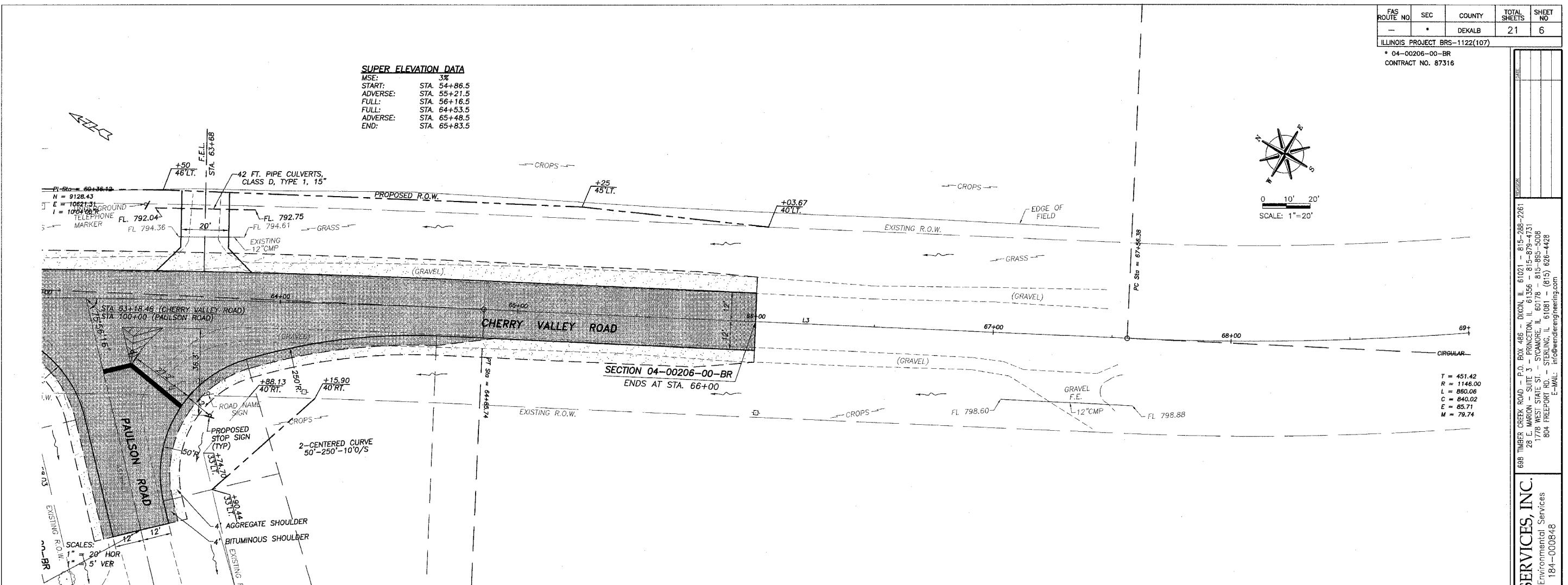
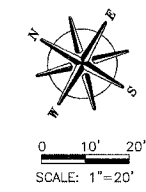


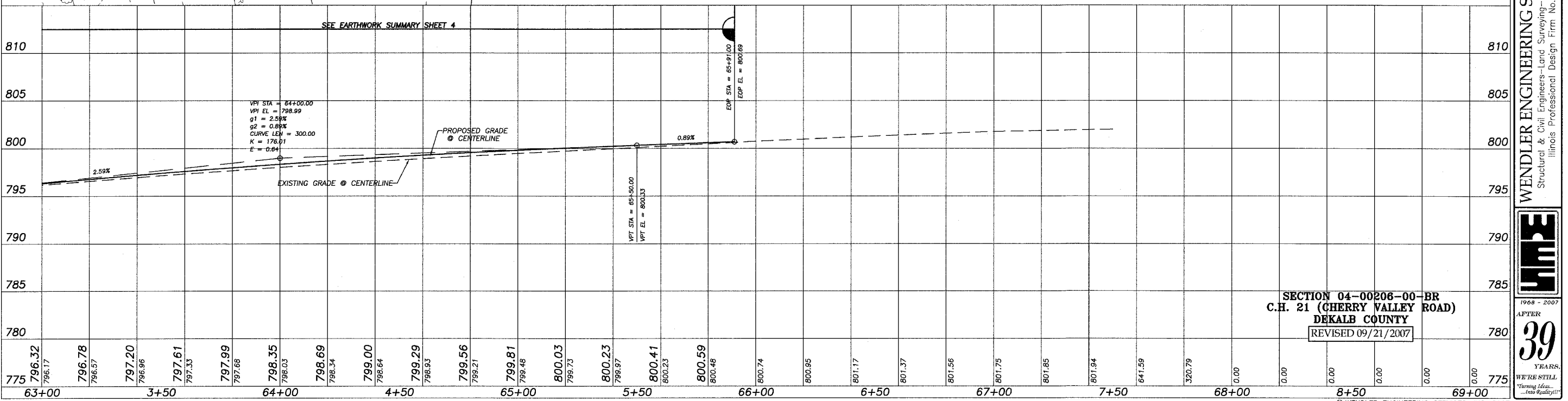
FAS ROUTE NO.	SEC	COUNTY	TOTAL SHEETS	SHEET NO
—	—	DEKALB	21	6

ILLINOIS PROJECT BRS-1122(107)  
 \* 04-00206-00-BR  
 CONTRACT NO. 87316

**SUPER ELEVATION DATA**  
 MSE: 3%  
 START: STA. 54+86.5  
 ADVERSE: STA. 55+21.5  
 FULL: STA. 56+16.5  
 FULL: STA. 64+53.5  
 ADVERSE: STA. 65+48.5  
 END: STA. 65+83.5



T = 451.42  
 R = 1146.00  
 L = 850.06  
 C = 840.02  
 E = 65.71  
 M = 79.74



SECTION 04-00206-00-BR  
 C.H. 21 (CHERRY VALLEY ROAD)  
 DEKALB COUNTY  
 REVISED 09/21/2007

DATE: \_\_\_\_\_  
 688 TIMBER CREEK ROAD - P.O. BOX 486 - DIXON, IL 61021 - 815-288-2261  
 28 E. WILSON ST. - PRINCETON, IL 61356 - 815-879-4731  
 178 W. HESLINGTON ST. - ST. LOUIS, MO 63103 - 314-865-9426  
 804 PLEFFORT BLVD. - ST. LOUIS, MO 63105 - 314-865-9426  
 E-MAIL: info@wendlerengineering.com

**WENDLER ENGINEERING SERVICES, INC.**  
 Structural & Civil Engineers—Land Surveying—Environmental Services  
 Illinois Professional Design Firm No. 184-000848