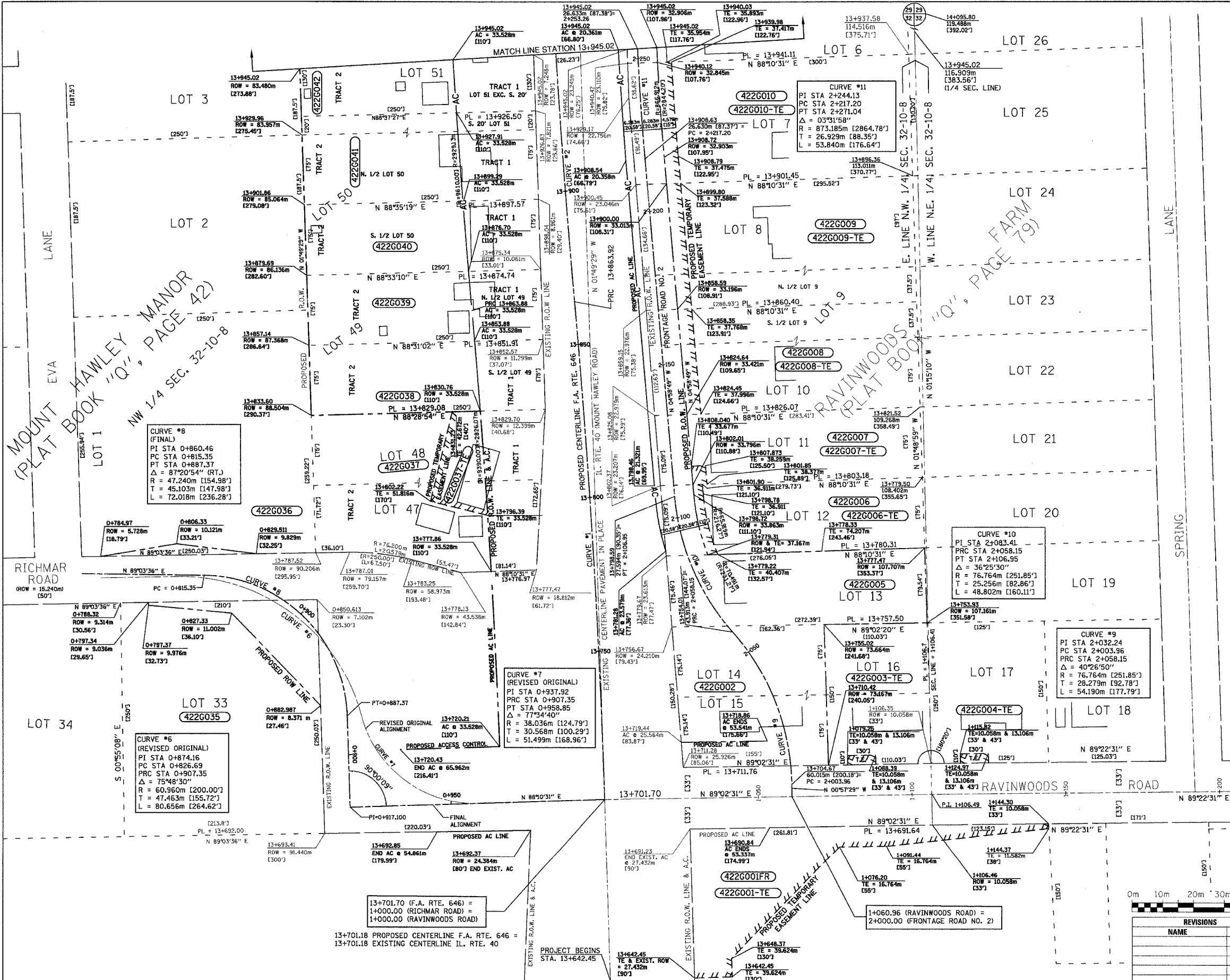


ILLINOIS DEPARTMENT OF TRANSPORTATION

RTE NO.	SECTION	COUNTY	TOTAL SHEET #
FA 646	(Y)W-1, RS-3	PEORIA	142 34
STATION 13+642.45 TO STATION 13+945.02			

T-10-N, R-8-E, 4th. P.M.
PEORIA COUNTY, ILLINOIS



CURVE #2
PI STA 13+945.31
D = 00°36'11"
PRC STA 13+863.92
PT STA 14+026.66
Δ = 03°31'58"
R = 2895.600m [9500.00']
T = 81.391m [267.03']
L = 162.739m [533.92']

CURVE #1
PI STA 13+782.57
D = 00°36'11"
PRC STA 13+701.18
PT STA 13+863.92
Δ = 03°31'58"
R = 2895.600m [9500.00']
T = 81.391m [267.03']
L = 162.739m [533.92']

CURVE #8 (FINAL)
PI STA 0+860.46
PC STA 0+815.35
PT STA 0+887.37
Δ = 87°20'54" (RT.)
R = 47.240m [154.98']
T = 45.103m [147.98']
L = 72.018m [236.28']

CURVE #6 (REVISED ORIGINAL)
PI STA 0+874.16
PC STA 0+826.69
PT STA 0+907.35
Δ = 75°48'30"
R = 60.960m [200.00']
T = 47.463m [155.72']
L = 80.656m [264.62']

CURVE #7 (REVISED ORIGINAL)
PI STA 0+937.92
PC STA 0+907.35
PT STA 0+958.85
Δ = 77°34'40"
R = 38.036m [124.79']
T = 30.568m [100.29']
L = 51.499m [168.96']

CURVE #10
PI STA 2+083.41
PRC STA 2+058.15
PT STA 2+106.95
Δ = 36°25'30"
R = 76.764m [251.85']
T = 25.256m [82.86']
L = 48.802m [160.11']

CURVE #9
PI STA 2+032.24
PC STA 2+003.96
PT STA 2+058.15
Δ = 40°26'50"
R = 76.764m [251.85']
T = 28.279m [92.78']
L = 54.190m [177.79']

REVISIONS	
NAME	DATE

ILLINOIS DEPARTMENT OF TRANSPORTATION
EXISTING & PROPOSED R.O.W. & T.E. STRIP MAP
STA. 13+642.45 TO STA. 13+945.02

SCALE: 1:600
DATE: 09/01/06
DRAWN BY: JDU
CHECKED BY: ECM