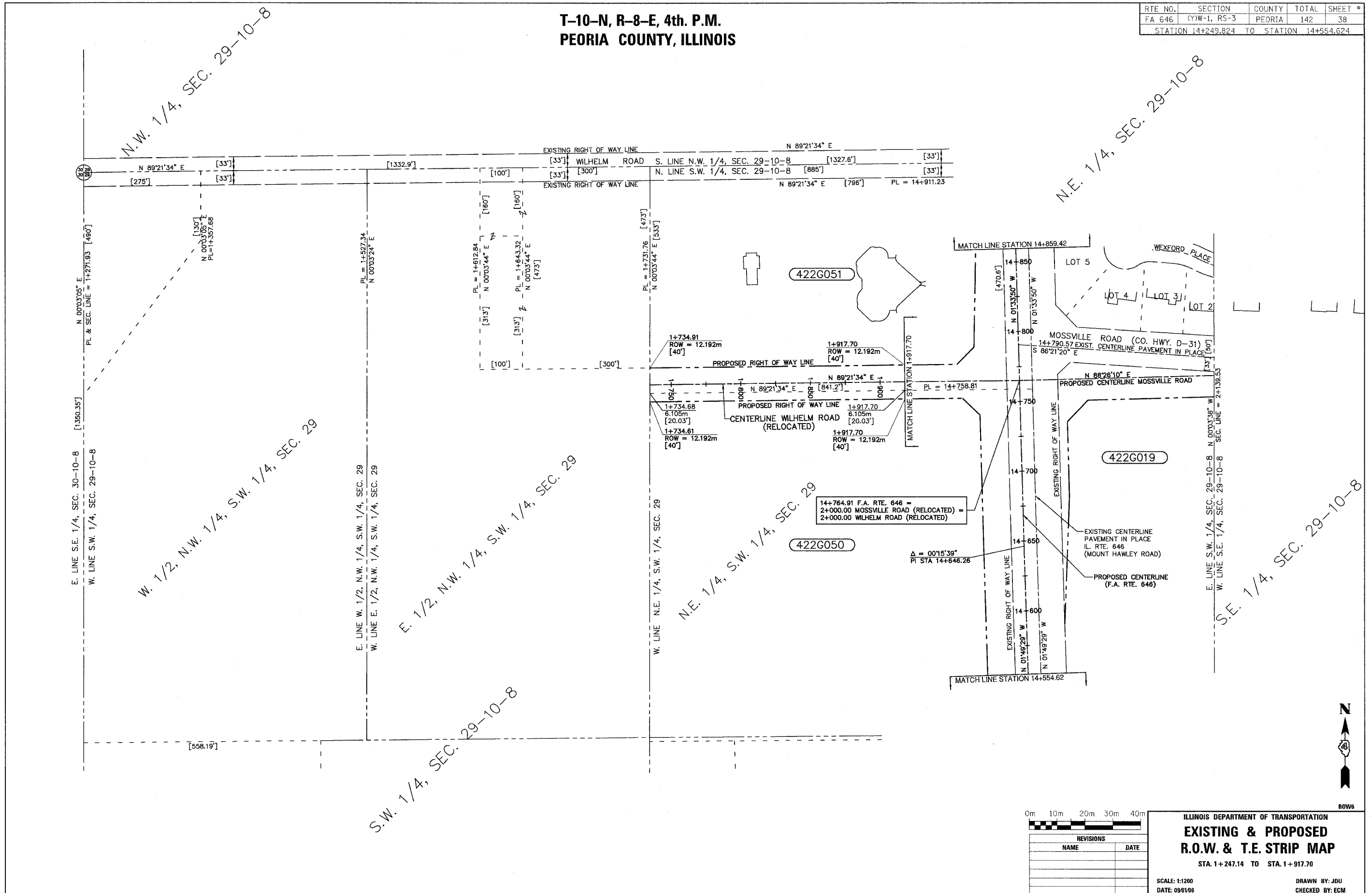


T-10-N, R-8-E, 4th. P.M.
PEORIA COUNTY, ILLINOIS

RTE. NO.	SECTION	COUNTY	TOTAL	SHEET #
FA 646	(Y)W-1, R5-3	PEORIA	142	38
STATION 14+249.824		TO STATION 14+554.624		



REVISIONS	
NAME	DATE

ILLINOIS DEPARTMENT OF TRANSPORTATION
**EXISTING & PROPOSED
R.O.W. & T.E. STRIP MAP**
STA. 1+247.14 TO STA. 1+917.70

SCALE: 1:1200
DATE: 09/01/06

DRAWN BY: JDU
CHECKED BY: ECM