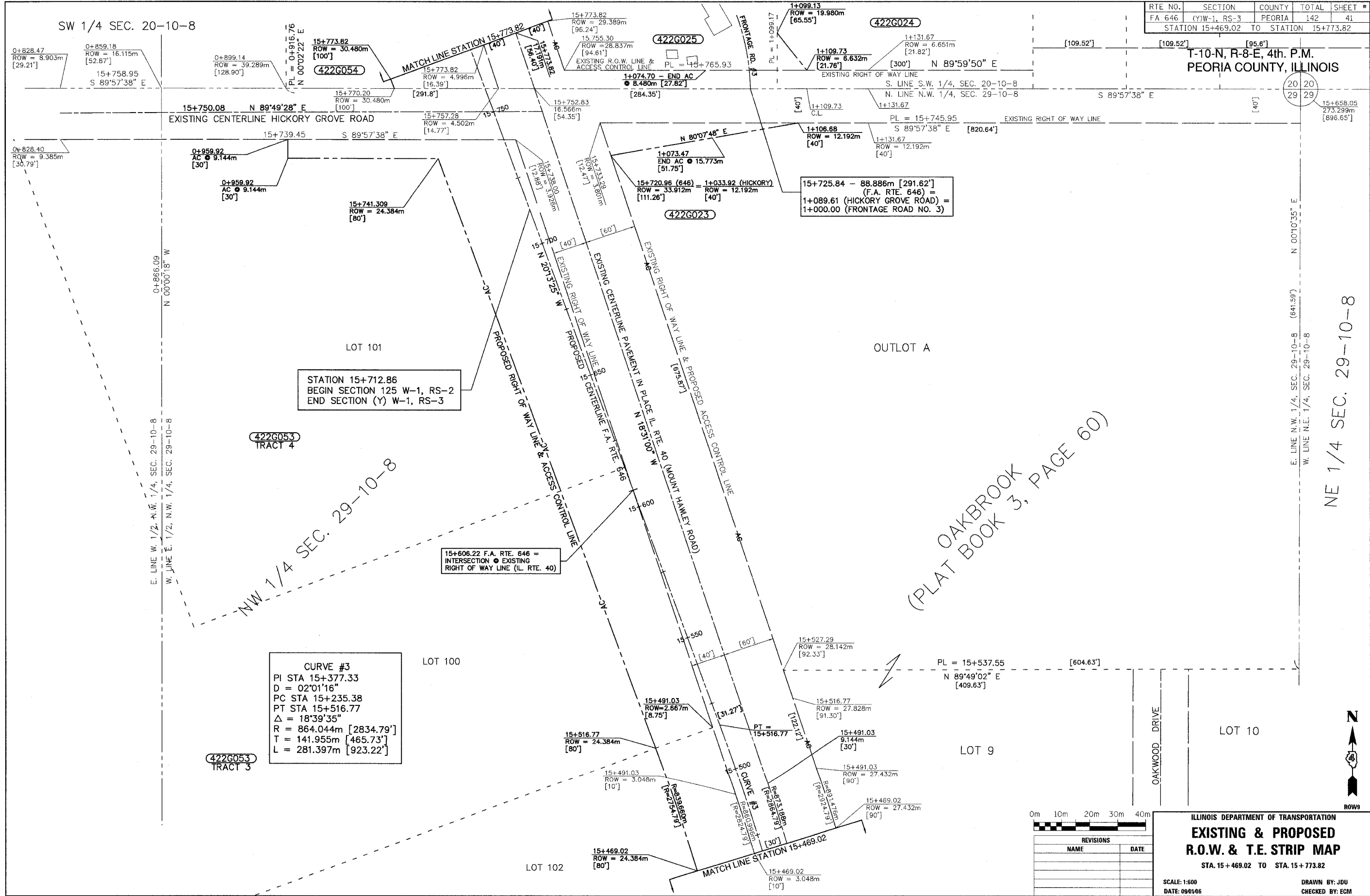


ILLINOIS DEPARTMENT OF TRANSPORTATION

RTE NO.	SECTION	COUNTY	TOTAL	SHEET #
FA 646	(Y)W-1, RS-3	PEORIA	142	41
STATION 15+469.02 TO STATION 15+773.82				



STATION 15+712.86
 BEGIN SECTION 125 W-1, RS-2
 END SECTION (Y) W-1, RS-3

CURVE #3
 PI STA 15+377.33
 D = 02°01'16"
 PC STA 15+235.38
 PT STA 15+516.77
 Δ = 18°39'35"
 R = 864.044m [2834.79']
 T = 141.955m [465.73']
 L = 281.397m [923.22']

(PLAT OAKBROOK
 BOOK 3, PAGE 60)



REVISIONS	
NAME	DATE

ILLINOIS DEPARTMENT OF TRANSPORTATION
**EXISTING & PROPOSED
 R.O.W. & T.E. STRIP MAP**
 STA. 15+469.02 TO STA. 15+773.82

SCALE: 1:600
 DATE: 09/10/05

DRAWN BY: JDU
 CHECKED BY: ECM

NE 1/4 SEC. 29-10-8

T-10-N, R-8-E, 4th. P.M.
 PEORIA COUNTY, ILLINOIS