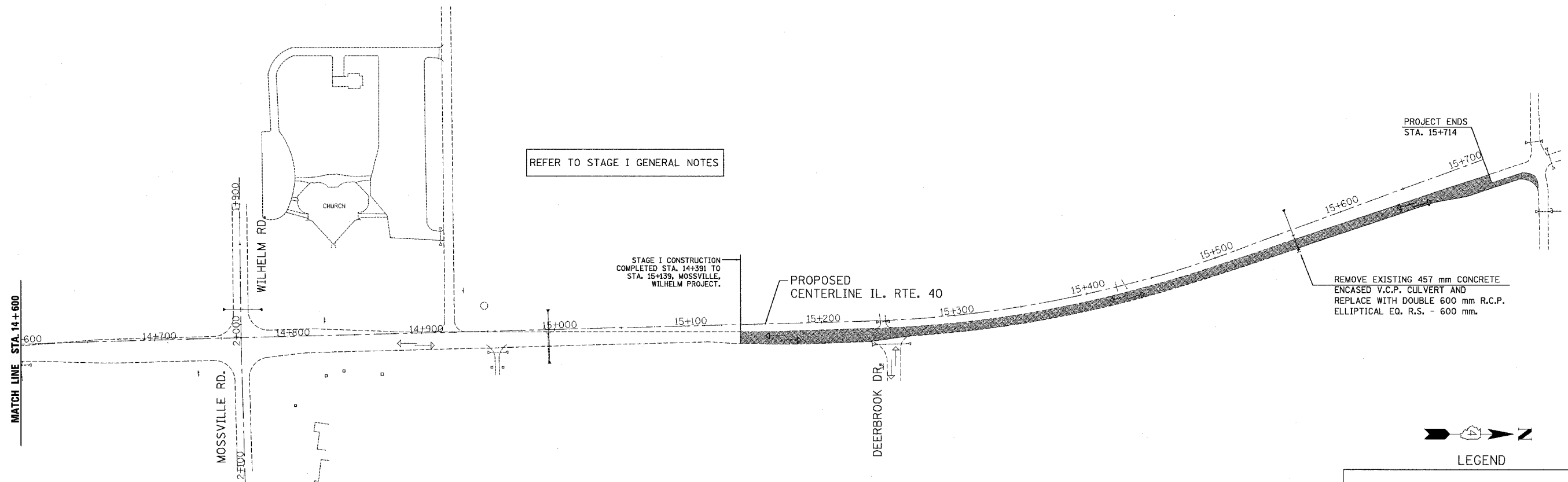


SUGGESTED CONSTRUCTION STAGING PLAN  
STAGE I

ROUTE NO.	SECTION	COUNTY	TOTAL SHEETS	SHEET NO.
F.A. 646 F.A.P.	(Y) W-1, RS-3	PEORIA	142	44
FED ROAD DIST NO 4		ILLINOIS PROJECT		

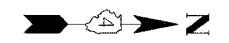


REFER TO STAGE I GENERAL NOTES

STAGE I CONSTRUCTION COMPLETED STA. 14+391 TO STA. 15+139, MOSSVILLE, WILHELM PROJECT.

PROPOSED CENTERLINE IL. RTE. 40

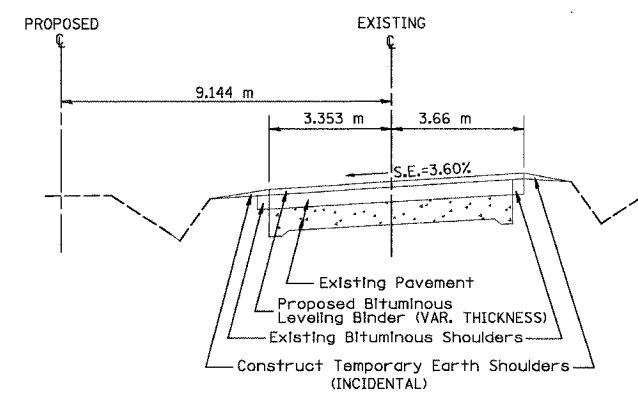
REMOVE EXISTING 457 mm CONCRETE ENCASED V.C.P. CULVERT AND REPLACE WITH DOUBLE 600 mm R.C.P. ELLIPTICAL EQ. R.S. - 600 mm.



LEGEND

S-3

- EXISTING PAVEMENTS
- PROPOSED PAVEMENTS
- PREVIOUSLY CONSTRUCTED PAVEMENTS
- EXISTING ENTRANCE TO BE CLOSED
- EXISTING ENTRANCE TO REMAIN
- PROPOSED ENTRANCE
- TRAFFIC FLOW
- EXISTING CULVERT
- PROPOSED CULVERT
- PREVIOUSLY CONSTRUCTED CULVERT
- BUILDING REMOVAL
- PAVEMENT REMOVAL



STAGE I  
Typical Section near Sta. 15+450

ILLINOIS DEPARTMENT OF TRANSPORTATION

**STAGE I CONSTRUCTION**  
**ILLINOIS ROUTE 40**

SCALE: NONE  
DATE: 09/01/06

DRAWN BY: JDU  
CHECKED BY: ECM