

B.M. "M29B-1" - BRASS DISC IN CONCRETE
 STA. 14+100±, 16m± RT.
 ELEV.= 243.566

T.B.M. "2" - TOP VALVE STEM FIRE HYD.
 STA. 14+002±, 16m± RT.
 ELEV.= 244.011

T.B.M. "24" - RR SPIKE IN POWER POLE
 STA. 0+855±, 7m± LT.
 ALTA RD., ELEV.= 240.472

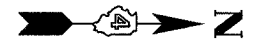
LEGEND - EROSION CONTROL

- INLET & PIPE PROTECTION
- TEMPORARY DITCH CHECKS
- PERIMETER EROSION CONTROL BARRIER
- EROSION CONTROL BLANKET

SEC.32, T.10N., R.8E., 4th P.M.

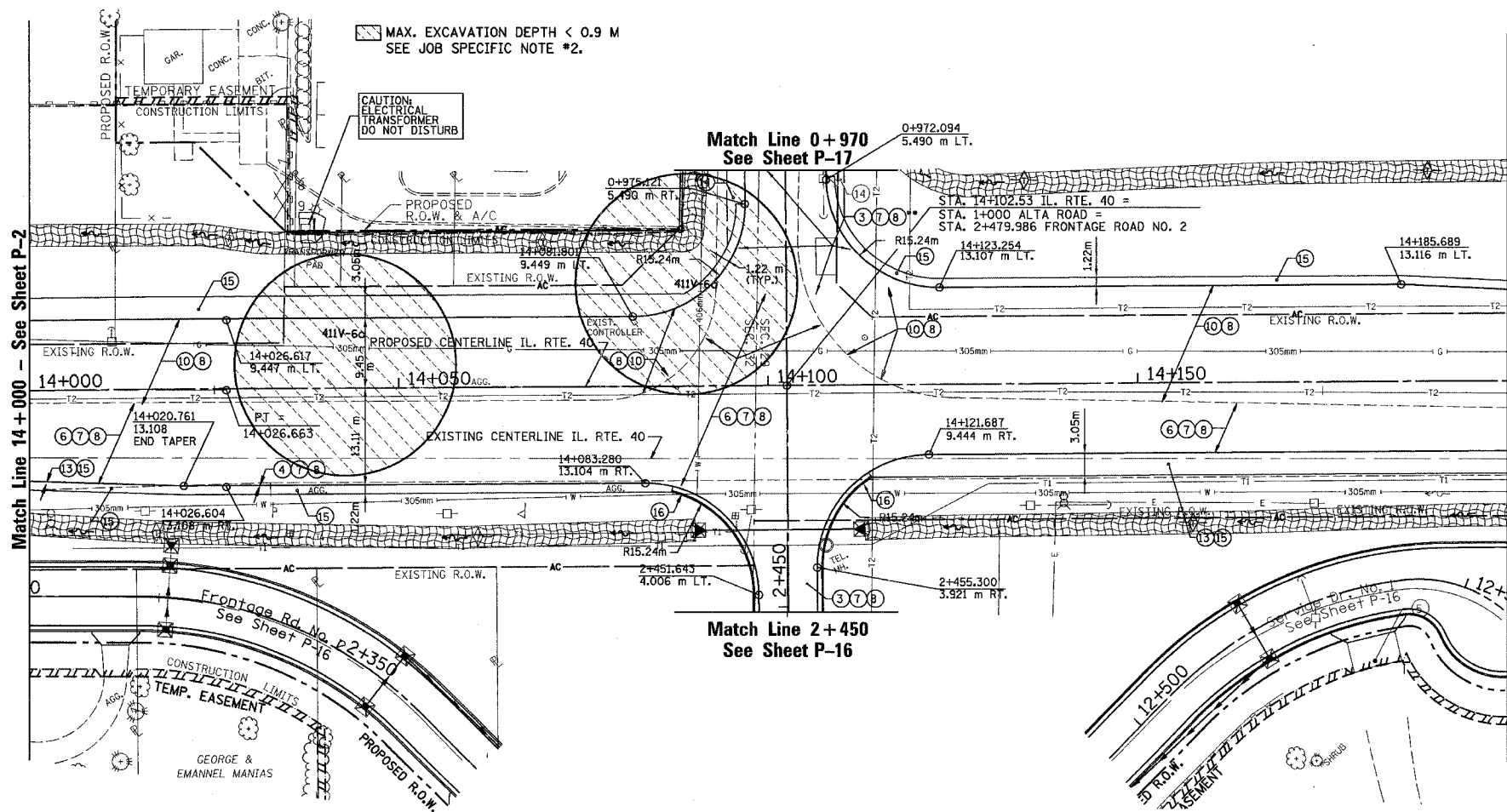
SEC.29, T.10N., R.8E., 4th P.M.

RTE NO.	SECTION	COUNTY	TOTAL SHEET #
FA 646	(Y)W-1, RS-3	PEORIA	142 / 64
STATION 14+000 TO STATION 14+200			

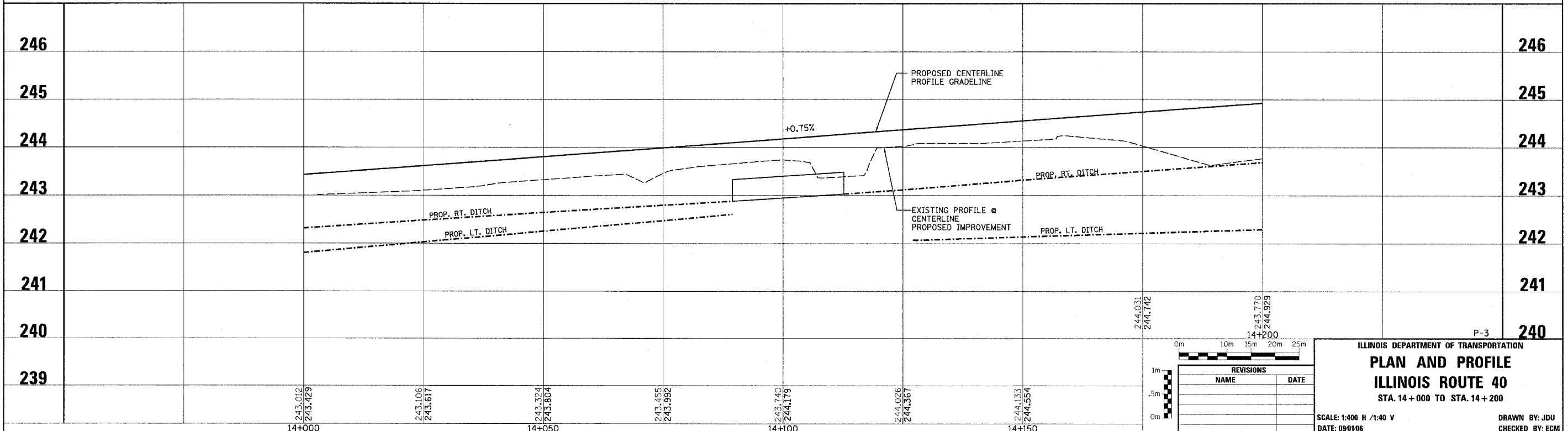


LEGEND

- ① FABRIC FORMED CONCRETE REVETMENT MAT
 - ② AGGREGATE BASE COURSE
 - ③ BITUMINOUS BASE COURSE
 - ④ BITUMINOUS CONCRETE BASE COURSE WIDENING
 - ⑤ AGGREGATE SURFACE COURSE
 - ⑥ LEVELING BINDER (mm)
 - ⑦ BITUMINOUS CONCRETE BINDER COURSE
 - ⑧ BITUMINOUS CONCRETE SURFACE COURSE
 - ⑨ BITUMINOUS SURFACE REMOVAL-BUTT JOINT
 - ⑩ BITUMINOUS CONCRETE PAVEMENT (FULL-DEPTH)
 - ⑪ PORTLAND CEMENT CONC. PAVEMENT SPECIAL W/INTEGRAL CURB
 - ⑫ PORTLAND CEMENT CONCRETE SIDEWALK
 - ⑬ BITUMINOUS SURFACE REMOVAL-VAR. DEPTH
 - ⑭ AGGREGATE SHOULDERS
 - ⑮ BITUMINOUS SHOULDERS
 - ⑯ COMBINATION CONCRETE CURB AND GUTTER
 - ⑰ CONCRETE MEDIAN TYPE SB 15.60
- GRANULAR EMBANKMENT, SPECIAL



FRONTAGE ROAD NO. 2
 STA. 2+460.50
 18m PIPE CULVERT, CLASS A, TYPE 1, 450mm
 W/ P.R.C. FLARED END SECTION - EACH END
 U.S.F.L. = 243.03
 D.S.F.L. = 242.91



REVISIONS	
NAME	DATE

ILLINOIS DEPARTMENT OF TRANSPORTATION
PLAN AND PROFILE
ILLINOIS ROUTE 40
 STA. 14+000 TO STA. 14+200

SCALE: 1:400 H / 1:40 V
 DATE: 09/01/06

DRAWN BY: JDU
 CHECKED BY: ECM