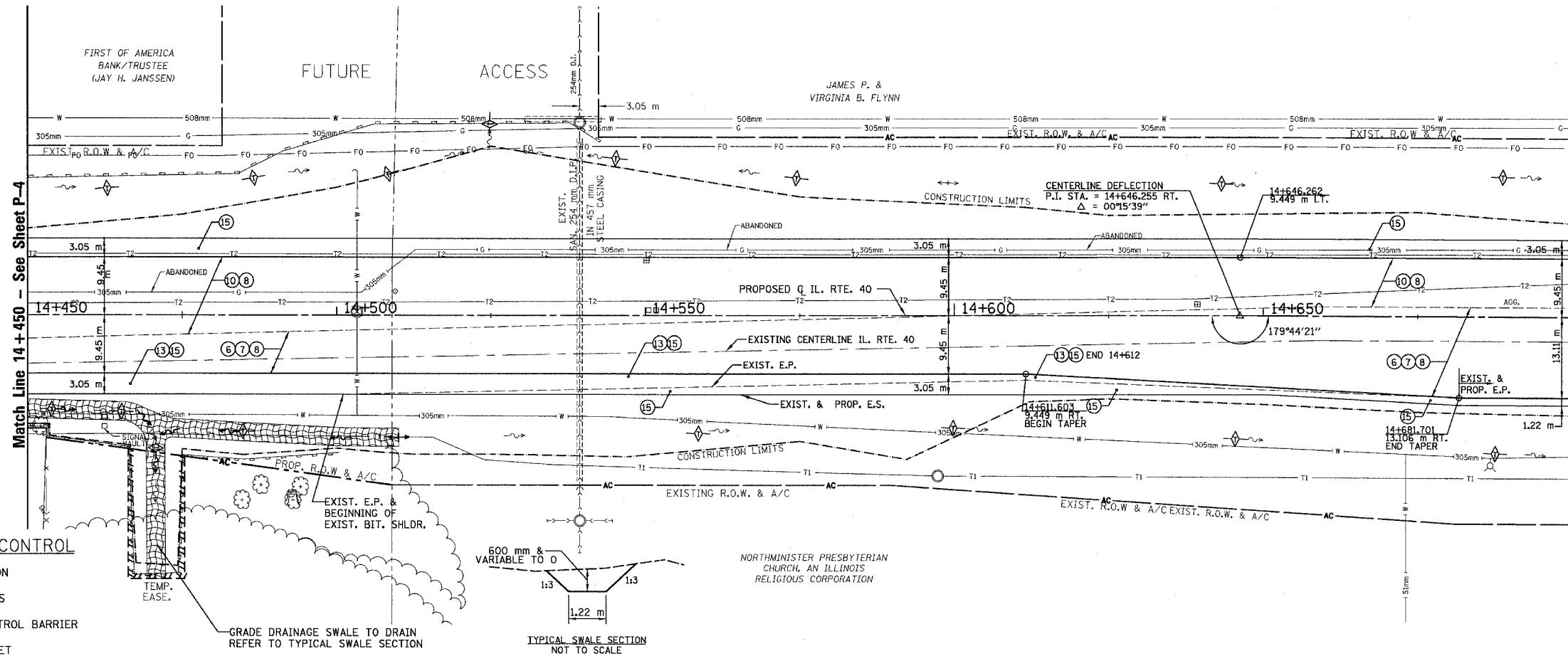


SEC.29, T.10N., R.8E., 4th P.M.

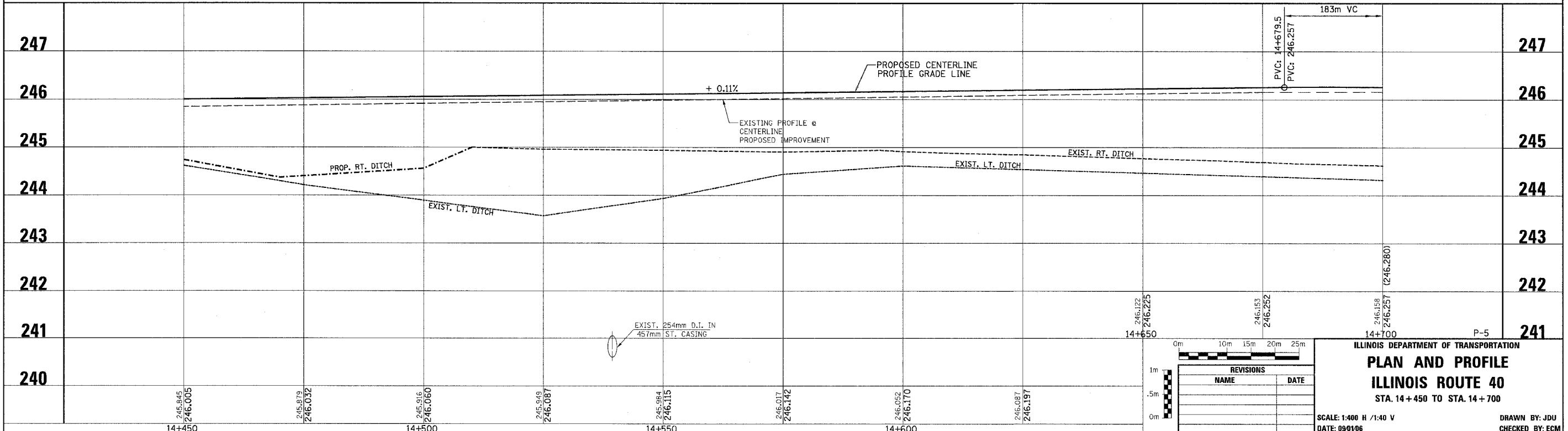
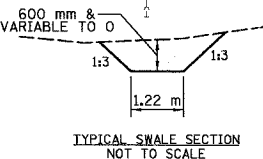
RTE NO.	SECTION	COUNTY	TOTAL SHEET #
FA 646	(Y)W-1, RS-3	PEORIA	142 66
STATION 14+450 TO STATION 14+700			

T.B.M. "4" - RR SPIKE IN POWER POLE  
 STA. 14+605 ±, 25m ± RT.  
 ELEV. = 246.700



- LEGEND**
- ① FABRIC FORMED CONCRETE REVETMENT MAT
  - ② AGGREGATE BASE COURSE
  - ③ BITUMINOUS BASE COURSE
  - ④ BITUMINOUS CONCRETE BASE COURSE WIDENING
  - ⑤ AGGREGATE SURFACE COURSE
  - ⑥ LEVELING BINDER (mm)
  - ⑦ BITUMINOUS CONCRETE BINDER COURSE
  - ⑧ BITUMINOUS CONCRETE SURFACE COURSE
  - ⑨ BITUMINOUS SURFACE REMOVAL-BUTT JOINT
  - ⑩ BITUMINOUS CONCRETE PAVEMENT (FULL-DEPTH)
  - ⑪ PORTLAND CEMENT CONC. PAVEMENT SPECIAL W/INTEGRAL CURB
  - ⑫ PORTLAND CEMENT CONCRETE SIDEWALK
  - ⑬ BITUMINOUS SURFACE REMOVAL-VAR. DEPTH
  - ⑭ AGGREGATE SHOULDERS
  - ⑮ BITUMINOUS SHOULDERS
  - ⑯ COMBINATION CONCRETE CURB AND GUTTER
  - ⑰ CONCRETE MEDIAN TYPE SB 15.60

- LEGEND - EROSION CONTROL**
- ⊗ INLET & PIPE PROTECTION
  - ◇ TEMPORARY DITCH CHECKS
  - PERIMETER EROSION CONTROL BARRIER
  - ▨ EROSION CONTROL BLANKET



REVISIONS	
NAME	DATE

ILLINOIS DEPARTMENT OF TRANSPORTATION  
**PLAN AND PROFILE**  
**ILLINOIS ROUTE 40**  
 STA. 14+450 TO STA. 14+700  
 SCALE: 1:400 H / 1:40 V  
 DATE: 09/01/06  
 DRAWN BY: JDU  
 CHECKED BY: ECM