

T.B.M. "22" - NW COR. CONC. LIGHT STANDARD
 STA. 1+855±, 151m± RT.
 WILHELM RD., ELEV. = 245.078

SEC. 29, T.10N., R.8E., 4th P.M.

RTE NO.	SECTION	COUNTY	TOTAL SHEET #
FA 646	(Y)W-1, RS-3	PEORIA	142
STATION 14+900 TO STATION 15+150			68

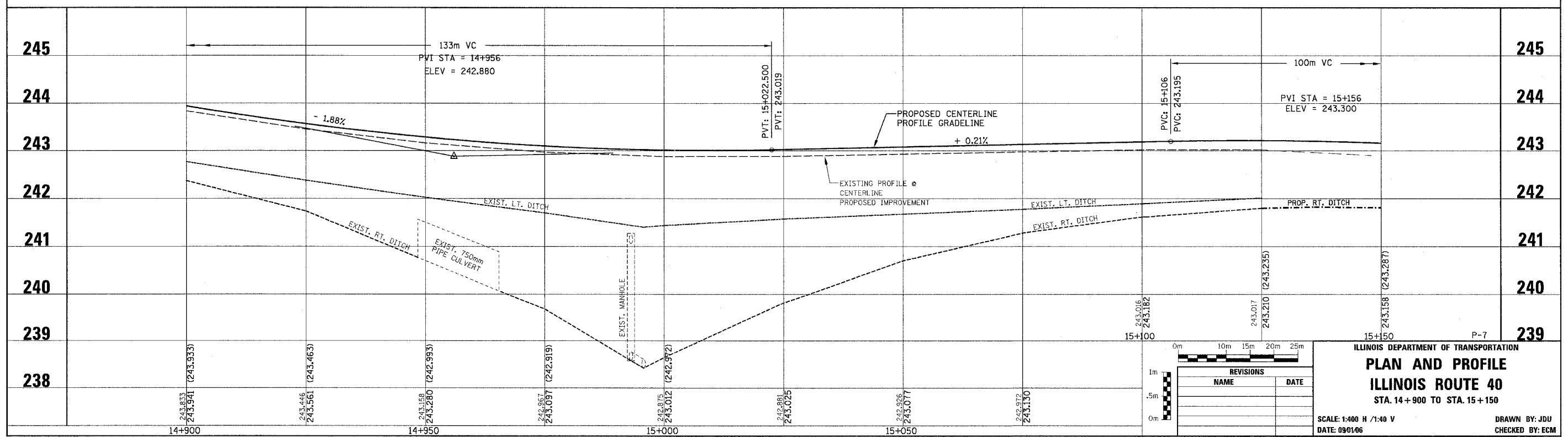
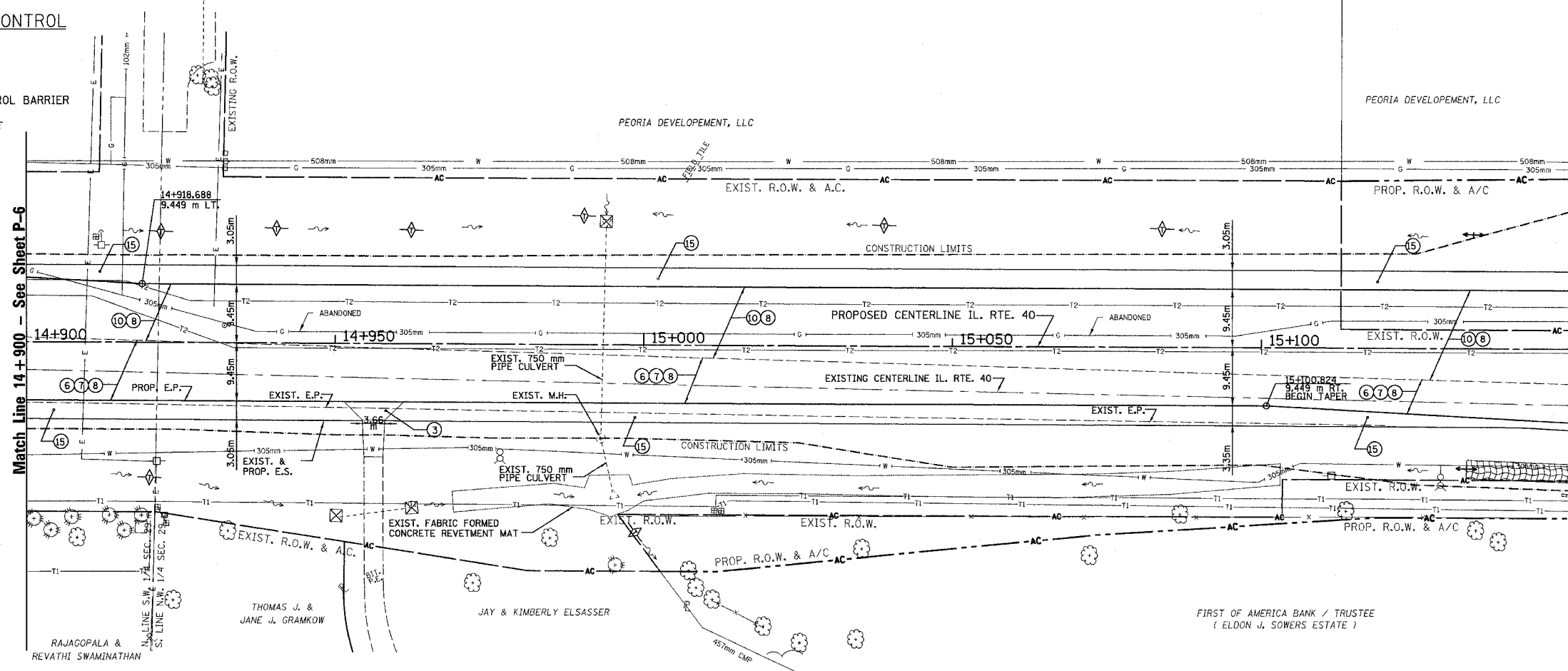
LEGEND - EROSION CONTROL

- INLET & PIPE PROTECTION
- TEMPORARY DITCH CHECKS
- PERIMETER EROSION CONTROL BARRIER
- EROSION CONTROL BLANKET



LEGEND

- ① FABRIC FORMED CONCRETE REVETMENT MAT
- ② AGGREGATE BASE COURSE
- ③ BITUMINOUS BASE COURSE
- ④ BITUMINOUS CONCRETE BASE COURSE WIDENING
- ⑤ AGGREGATE SURFACE COURSE
- ⑥ LEVELING BINDER (mm)
- ⑦ BITUMINOUS CONCRETE BINDER COURSE
- ⑧ BITUMINOUS CONCRETE SURFACE COURSE
- ⑨ BITUMINOUS SURFACE REMOVAL-BUTT JOINT
- ⑩ BITUMINOUS CONCRETE PAVEMENT (FULL-DEPTH)
- ⑪ PORTLAND CEMENT CONC. PAVEMENT SPECIAL W/INTEGRAL CURB
- ⑫ PORTLAND CEMENT CONCRETE SIDEWALK
- ⑬ BITUMINOUS SURFACE REMOVAL-VAR. DEPTH
- ⑭ AGGREGATE SHOULDERS
- ⑮ BITUMINOUS SHOULDERS
- ⑯ COMBINATION CONCRETE CURB AND GUTTER
- ⑰ CONCRETE MEDIAN TYPE SB 15.60



REVISIONS	
NAME	DATE

ILLINOIS DEPARTMENT OF TRANSPORTATION
PLAN AND PROFILE
ILLINOIS ROUTE 40
 STA. 14+900 TO STA. 15+150
 SCALE: 1:400 H / 1:40 V
 DATE: 09/10/06
 DRAWN BY: JDU
 CHECKED BY: ECM