

SEC.29, T.10N., R.8E., 4th P.M.

RTE NO.	SECTION	COUNTY	TOTAL	SHEET #
FA 646	(Y)W-1, RS-3	PEORIA	142	69
STATION 15+150 TO STATION 15+350				

T.B.M. "6" - RR SPIKE IN POWER POLE
 STA. 15+235±, 21m± RT.
 ELEV.= 242.829

T.B.M. "21" - N. CAP BOLT FIRE HYD.
 STA. 1+194±, 9m± RT.
 DEERBROOK DR., ELEV.= 240.393

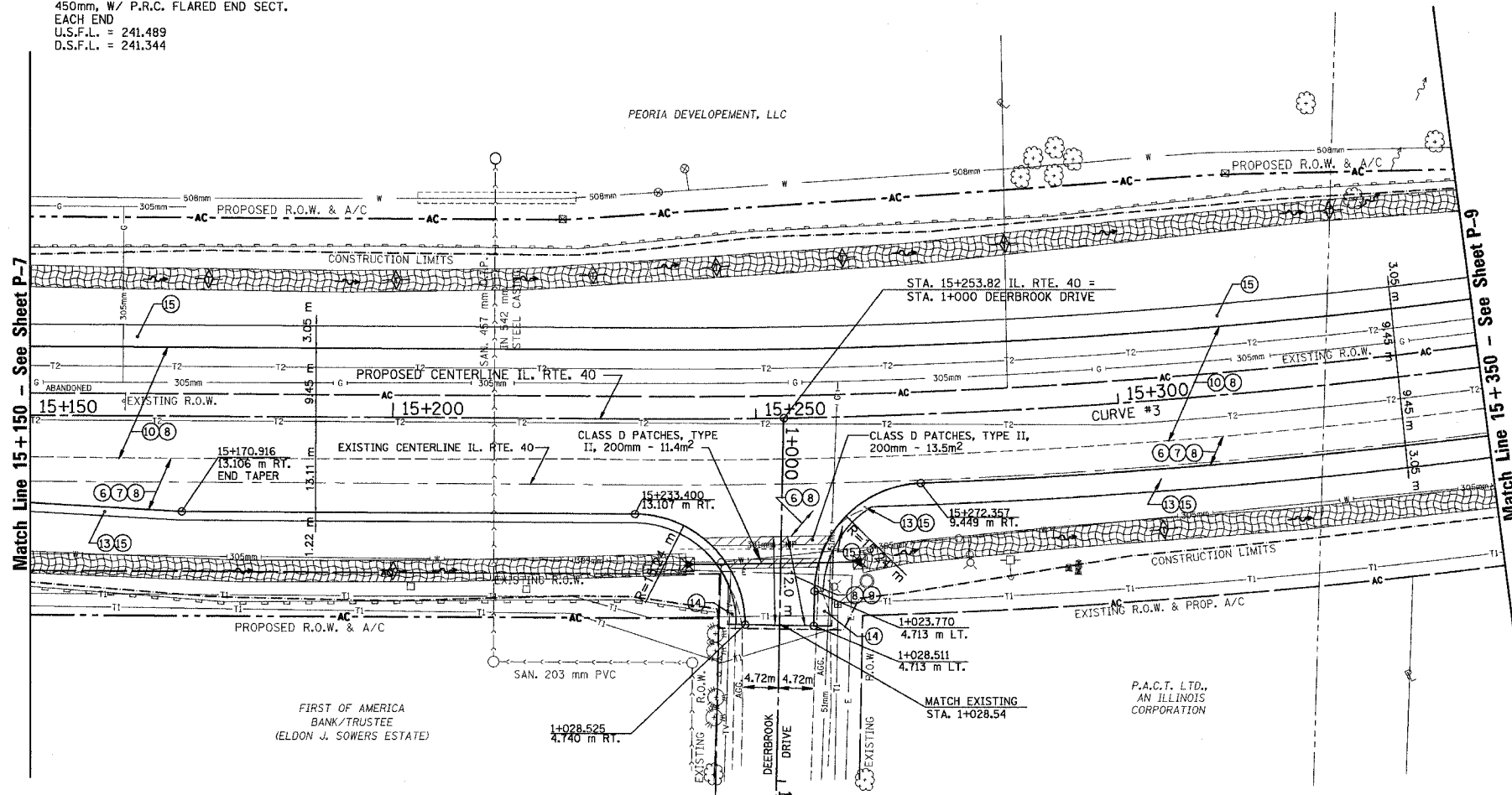
DEERBROOK DR. - STA. 1+020
 22m PIPE CULV. CLASS A, TY. 1,
 450mm, W/ P.R.C. FLARED END SECT.
 EACH END
 U.S.F.L. = 241.489
 D.S.F.L. = 241.344

IL. RTE 40
 CENTERLINE CURVE DATA
 CURVE #3

PI STA 15+377.332
 D = 02°01'16"
 PC STA 15+235.377
 PT STA 15+516.773
 $\Delta = 18^{\circ}39'35''$ (L.T.)
 R = 864.044 m
 T = 141.955 m
 L = 281.396 m
 $e = 3.6\%$
 ATTAIN S.E. - 15+155 - 15+275
 REMOVE S.E. - 15+477 - 15+597

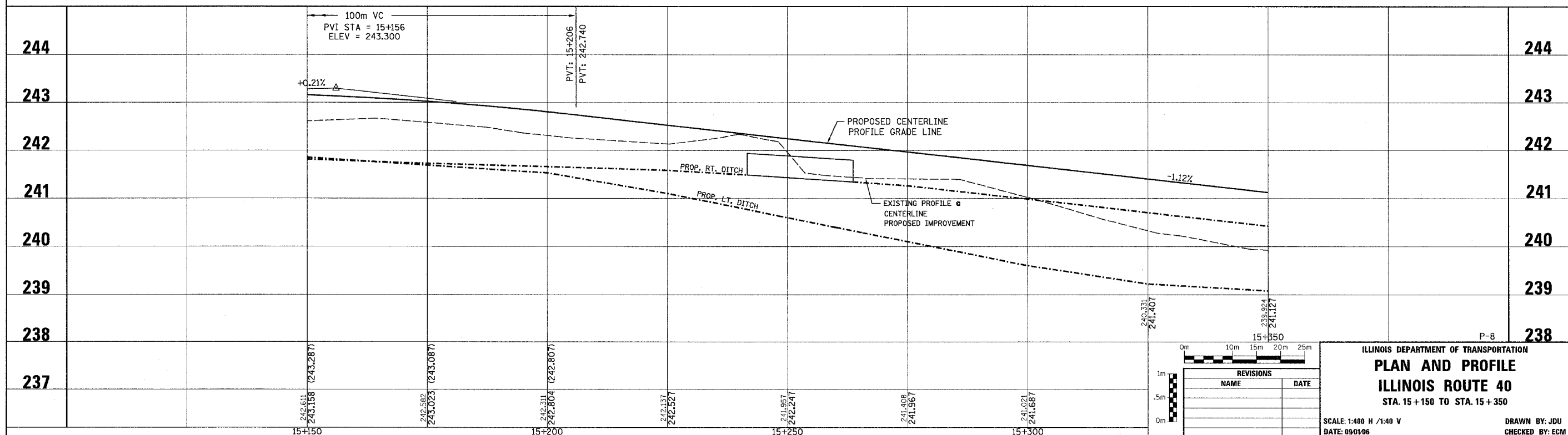
LEGEND - EROSION CONTROL

- INLET & PIPE PROTECTION
- TEMPORARY DITCH CHECKS
- PERIMETER EROSION CONTROL BARRIER
- EROSION CONTROL BLANKET



LEGEND

- 1 FABRIC FORMED CONCRETE REVETMENT MAT
- 2 AGGREGATE BASE COURSE
- 3 BITUMINOUS BASE COURSE
- 4 BITUMINOUS CONCRETE BASE COURSE WIDENING
- 5 AGGREGATE SURFACE COURSE
- 6 LEVELING BINDER (mm)
- 7 BITUMINOUS CONCRETE BINDER COURSE
- 8 BITUMINOUS CONCRETE SURFACE COURSE
- 9 BITUMINOUS SURFACE REMOVAL-BUTT JOINT
- 10 BITUMINOUS CONCRETE PAVEMENT (FULL-DEPTH)
- 11 PORTLAND CEMENT CONC. PAVEMENT SPECIAL W/INTEGRAL CURB
- 12 PORTLAND CEMENT CONCRETE SIDEWALK
- 13 BITUMINOUS SURFACE REMOVAL-VAR. DEPTH
- 14 AGGREGATE SHOULDERS
- 15 BITUMINOUS SHOULDERS
- 16 COMBINATION CONCRETE CURB AND GUTTER
- 17 CONCRETE MEDIAN TYPE SB 15.60



REVISIONS	
NAME	DATE

ILLINOIS DEPARTMENT OF TRANSPORTATION
PLAN AND PROFILE
ILLINOIS ROUTE 40
 STA. 15+150 TO STA. 15+350

SCALE: 1:400 H / 1:40 V
 DATE: 05/01/06
 DRAWN BY: JDU
 CHECKED BY: ECM