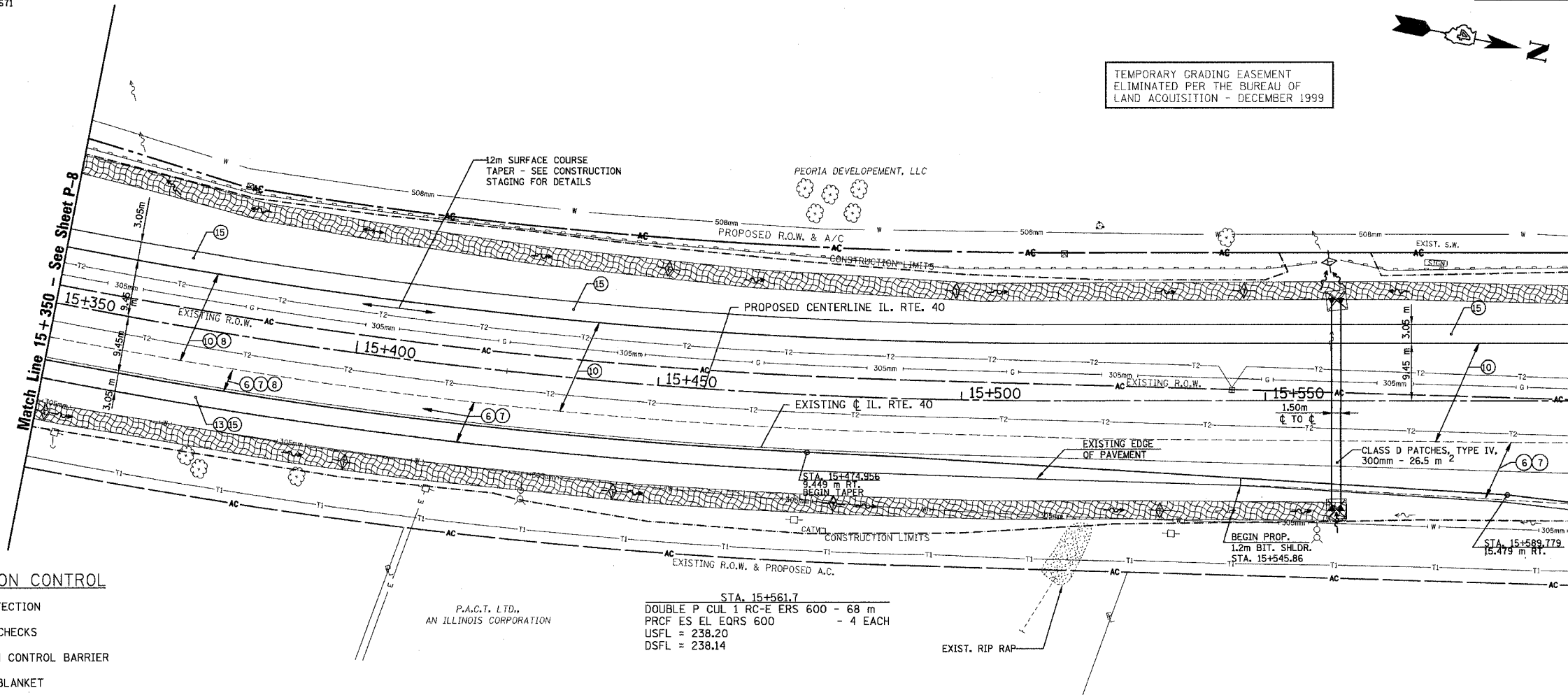


T.B.M. "7" - TOP VALVE STEM FIRE HYD.  
 STA. 15+558±, 23± RT.  
 ELEV. = 239.671

SEC. 29, T. 10N., R. 8E., 4th P.M.

RTE NO.	SECTION	COUNTY	TOTAL SHEET #
FA 646	(Y)W-1, RS-3	PEORIA	142 70
STATION 15+350 TO STATION 15+600			

TEMPORARY GRADING EASEMENT  
 ELIMINATED PER THE BUREAU OF  
 LAND ACQUISITION - DECEMBER 1999

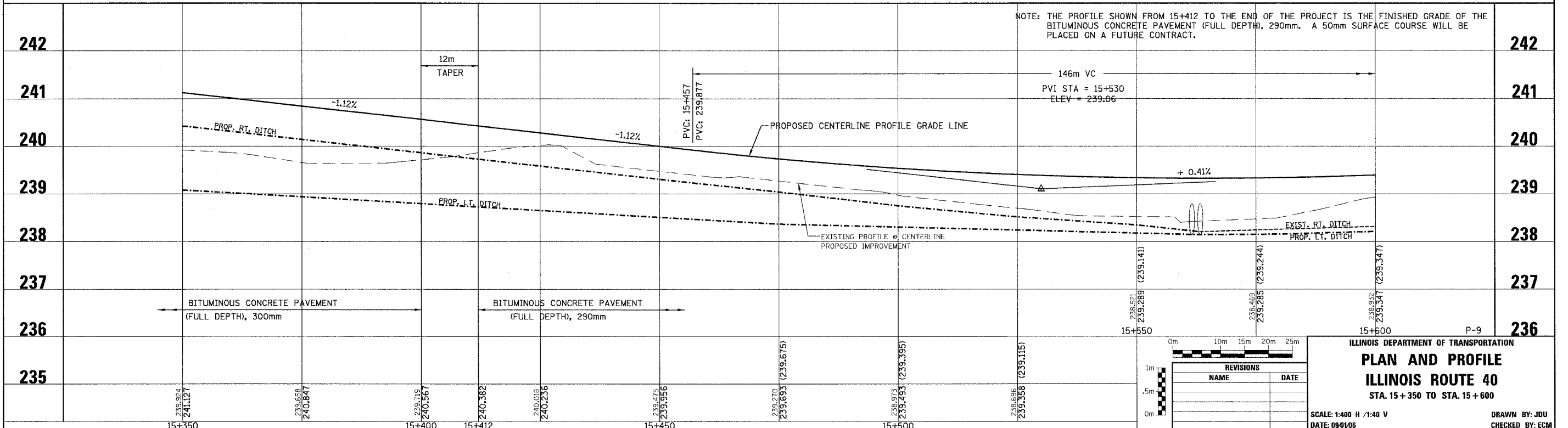


LEGEND - EROSION CONTROL

- INLET & PIPE PROTECTION
- TEMPORARY DITCH CHECKS
- PERIMETER EROSION CONTROL BARRIER
- EROSION CONTROL BLANKET

LEGEND

- ① FABRIC FORMED CONCRETE REVETMENT MAT
- ② AGGREGATE BASE COURSE
- ③ BITUMINOUS BASE COURSE
- ④ BITUMINOUS CONCRETE BASE COURSE WIDENING
- ⑤ AGGREGATE SURFACE COURSE
- ⑥ LEVELING BINDER (mm)
- ⑦ BITUMINOUS CONCRETE BINDER COURSE
- ⑧ BITUMINOUS CONCRETE SURFACE COURSE
- ⑨ BITUMINOUS SURFACE REMOVAL-BUTT JOINT
- ⑩ BITUMINOUS CONCRETE PAVEMENT (FULL-DEPTH)
- ⑪ PORTLAND CEMENT CONC. PAVEMENT SPECIAL W/INTEGRAL CURB
- ⑫ PORTLAND CEMENT CONCRETE SIDEWALK
- ⑬ BITUMINOUS SURFACE REMOVAL-VAR. DEPTH
- ⑭ AGGREGATE SHOULDERS
- ⑮ BITUMINOUS SHOULDERS
- ⑯ COMBINATION CONCRETE CURB AND GUTTER
- ⑰ CONCRETE MEDIAN TYPE SB 15.60



NOTE: THE PROFILE SHOWN FROM 15+412 TO THE END OF THE PROJECT IS THE FINISHED GRADE OF THE BITUMINOUS CONCRETE PAVEMENT (FULL DEPTH), 290mm. A 50mm SURFACE COURSE WILL BE PLACED ON A FUTURE CONTRACT.

REVISIONS	
NAME	DATE

ILLINOIS DEPARTMENT OF TRANSPORTATION  
**PLAN AND PROFILE**  
**ILLINOIS ROUTE 40**  
 STA. 15+350 TO STA. 15+600

SCALE: 1:400 H / 1:40 V  
 DATE: 09/10/06

DRAWN BY: JDU  
 CHECKED BY: ECM