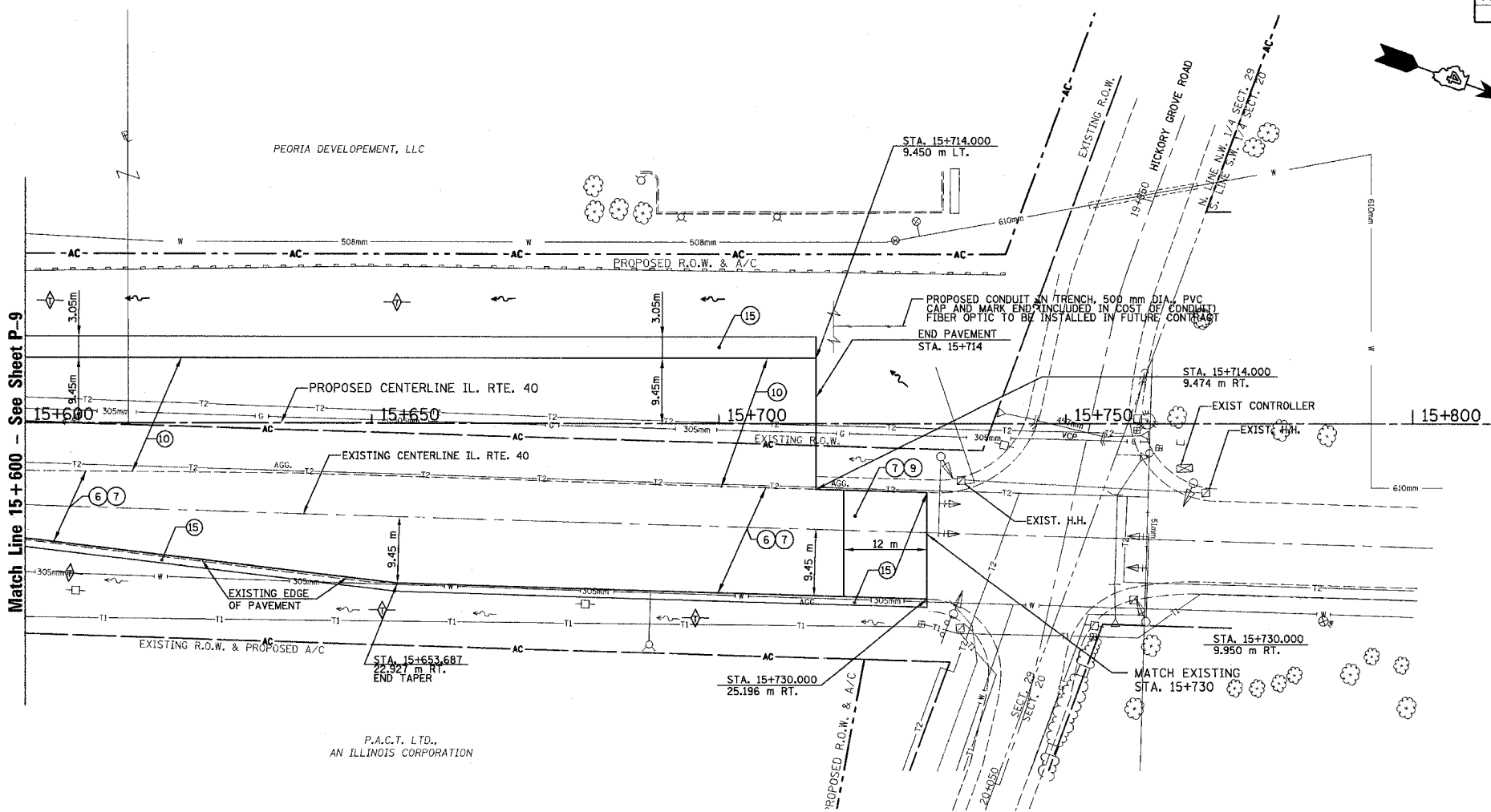


SEC.29, T.10N., R.8E., 4th P.M.

RTE NO.	SECTION	COUNTY	TOTAL	SHEET #
FA 646	(Y)W-1, RS-3	PEORIA	142	71
STATION 15+600 TO STATION 15+800				

T.B.M. "19" - N. CAP BOLT FIRE HYD.  
 STA. 1+140±, 5m± RT.  
 HICKORY GROVE, ELEV.= 240.155

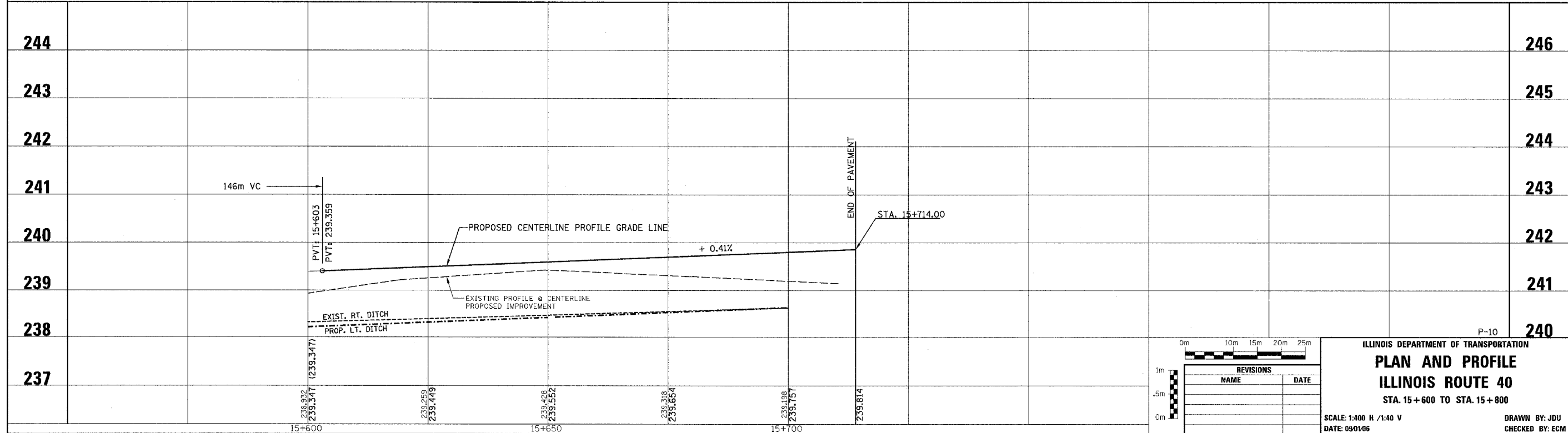
T.B.M. "20" - RR SPIKE IN POWER POLE  
 STA. 0+900±, 39m± LT.  
 HICKORY GROVE, ELEV.= 240.290



- LEGEND**
- ① FABRIC FORMED CONCRETE RETEMENT MAT
  - ② AGGREGATE BASE COURSE
  - ③ BITUMINOUS BASE COURSE
  - ④ BITUMINOUS CONCRETE BASE COURSE WIDENING
  - ⑤ AGGREGATE SURFACE COURSE
  - ⑥ LEVELING BINDER (mm)
  - ⑦ BITUMINOUS CONCRETE BINDER COURSE
  - ⑧ BITUMINOUS CONCRETE SURFACE COURSE
  - ⑨ BITUMINOUS SURFACE REMOVAL-BUTT JOINT
  - ⑩ BITUMINOUS CONCRETE PAVEMENT (FULL-DEPTH)
  - ⑪ PORTLAND CEMENT CONC. PAVEMENT SPECIAL W/INTEGRAL CURB
  - ⑫ PORTLAND CEMENT CONCRETE SIDEWALK
  - ⑬ BITUMINOUS SURFACE REMOVAL-VAR. DEPTH
  - ⑭ AGGREGATE SHOULDERS
  - ⑮ BITUMINOUS SHOULDERS
  - ⑯ COMBINATION CONCRETE CURB AND GUTTER
  - ⑰ CONCRETE MEDIAN TYPE SB 15.60

**LEGEND - EROSION CONTROL**

- ☒ INLET & PIPE PROTECTION
- ◇ TEMPORARY DITCH CHECKS
- PERIMETER EROSION CONTROL BARRIER
- ▨ EROSION CONTROL BLANKET



REVISIONS	
NAME	DATE

ILLINOIS DEPARTMENT OF TRANSPORTATION

**PLAN AND PROFILE**

**ILLINOIS ROUTE 40**

STA. 15+600 TO STA. 15+800

SCALE: 1:400 H / 1:40 V

DATE: 09/10/06

DRAWN BY: JDU

CHECKED BY: ECM