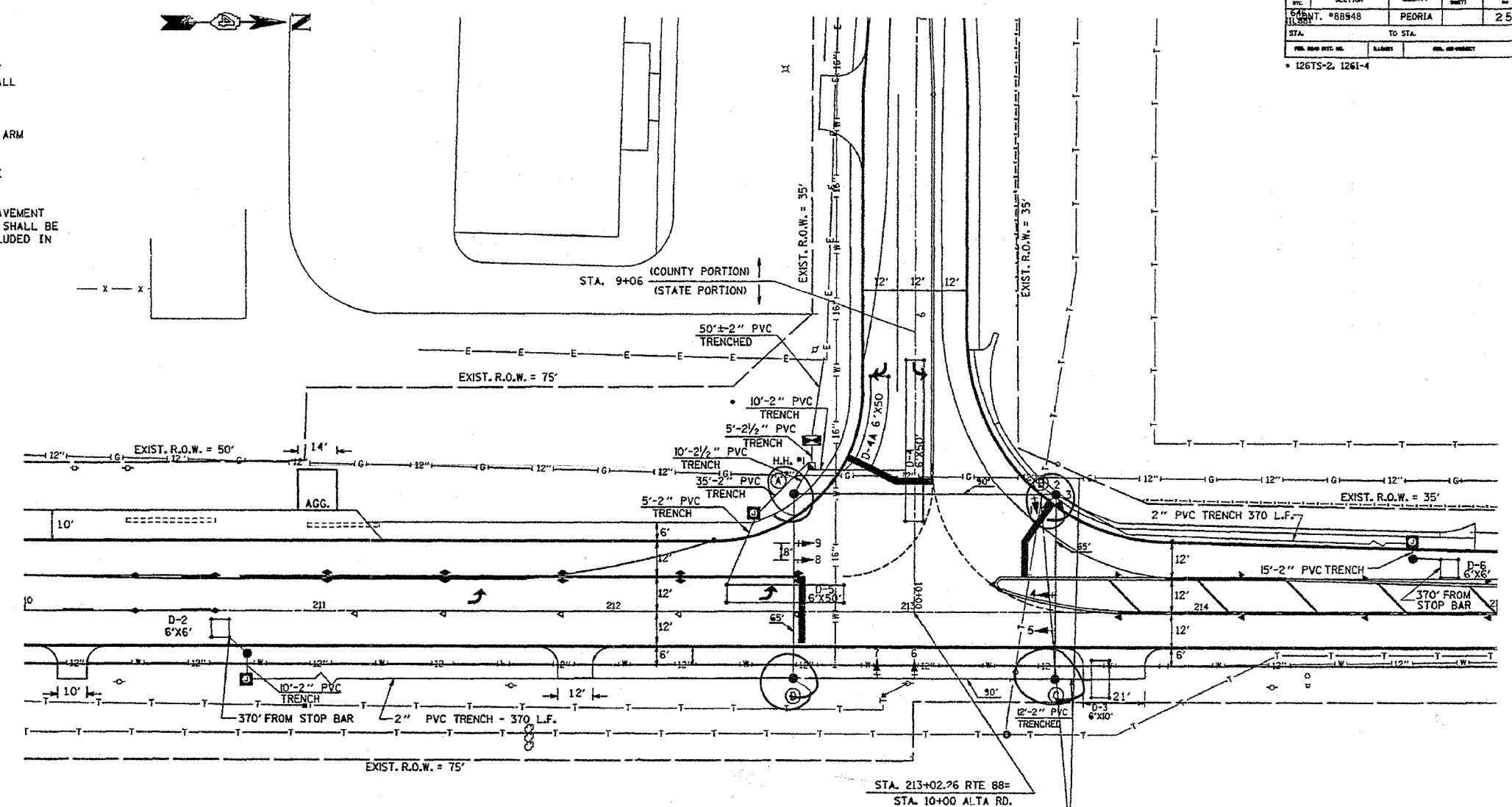


**CONSTRUCTION NOTES**

1. PROPOSED DETECTOR LOOPS SHALL BE INSTALLED IN THE CENTER OF THEIR RESPECTIVE TRAVEL LANES. THE ENGINEER OF TRAFFIC SHALL BE NOTIFIED FOR VERIFICATION OF DETECTOR PLACEMENT BEFORE INSTALLATION.
2. THE RED SECTIONS OF THE SIGNAL HEAD SHARING THE SAME MAST ARM SHALL BE LEVEL WITH ONE ANOTHER.
3. THE PROPOSED MAST ARM MOUNTED TRAFFIC SIGNAL HEADS SHALL BE MOUNTED DIRECTLY OVER THE CENTER OF THEIR RESPECTIVE LANES.
4. THE PROPOSED DETECTOR LOOPS SHALL BE CUT IN THE EXISTING PAVEMENT OR BINDER COURSE BEFORE THE FINAL OVERLAY. THE RISER AREA SHALL BE CHIPPED OUT AND FILLED WITH EPOXY. THIS WORK SHALL BE INCLUDED IN THE BID PRICE FOR DETECTOR LOOP.

**TRAFFIC SIGNALS LEGEND**

- PROP. HANDHOLE
- PROP. CONTROLLER
- PROP. JUNCTION BOX
- PROP. 6' X 50' DETECTOR LOOP
- PROP. 6' X 50' QUADRAPOLE LOOP
- PROP. 6' X 10' DETECTOR LOOP
- PROP. 6' X 6' DETECTOR LOOP
- PROP. SIGNAL HEAD WITH BACKPLATE
- PROP. SIGNAL HEAD
- SPLICE TYPE II
- PROP. SIGNAL POST



CAUTION:  
GTE FIBEROPTIC CABLE & CILCO  
GAS LINE 36" DEPTH.

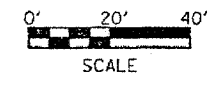
DESCRIPTION	UNIT	TOTAL	DESCRIPTION	UNIT	TOTAL
SIGNAL HEAD, 1-FACE, 3 SECTION, SPAN WIRE MOUNTED	EACH	6	ELECTRIC CABLE AERIAL SUSPENDED NO. 14 5/C	LIN FT	225
SIGNAL HEAD, 2-FACE, 1-3 SECTION, 1-5 SECTION, BRACKET MOUNTED	EACH	1	ELECTRIC CABLE AERIAL SUSPENDED NO. 14 7/C	LIN FT	230
SIGNAL HEAD, 1-FACE, 4-SECTION, WITH ONE DUAL-INDICATION SECTION, SPAN WIRE MOUNTED	EACH	1	ELECTRIC CABLE IN CONDUIT NO. 18, 3 PAIR TWISTED, SHIELDED	LIN FT	889
TRAFFIC SIGNAL BACKPLATE	EACH	7	ELECTRIC CABLE AERIAL SUSPENDED NO. 18, 3 PAIR TWISTED, SHIELDED	LIN FT	310
FULL-ACTUATED CONTROLLER, STANDARD SEQUENCE IV, 5 PHASES, IN TYPE IV CABINET	EACH	1	SPAN WIRE	LIN FT	310
INDUCTION LOOP DETECTOR AMPLIFIER	EACH	6	TETHER WIRE	LIN FT	310
DETECTOR LOOP, TYPE I	LIN FT	553	SERVICE INSTALLATION, TYPE B	EACH	1
PVC CONDUIT IN TRENCH 2"	LIN FT	877	CONCRETE FOUNDATION, TYPE D	LIN FT	4
PVC CONDUIT IN TRENCH 2 1/2"	LIN FT	15	CONCRETE FOUNDATION, TYPE E 24-INCH DIAMETER	LIN FT	44
ELECTRIC CABLE IN CONDUIT NO. 6 2/C	LIN FT	51	CONCRETE HANDHOLE	EACH	1
ELECTRIC CABLE IN CONDUIT NO. 14 5/C	LIN FT	72	JUNCTION BOX	EACH	3
ELECTRIC CABLE IN CONDUIT NO. 14 7/C	LIN FT	48	TRENCH AND BACKFILL	LIN FT	892
			PAINT AND ERECT STEEL STRAIN POLE	EACH	4

SCHEDULE OF SIGNAL HEAD QUANTITIES

TOTAL QUANTITY	UNIT	ITEM	LOCATIONS
6.0	EACH	SH, 1F, 3S, SWM	1, 5, 6, 7, 8, 9
1.0	EACH	SH, 2F, 1-3S, 1-5S, BM	2, 3
1.0	EACH	SH, 1F, 4S, 1 DI, SWM	4
7.0	EACH	TS BACKPLATE	1, 4, 5, 6, 7, 8, 9

SCHEDULE OF STRAIN POLES

STATION	DISTANCE
212+61	40' LEFT
212+61	23' RIGHT
213+50.5	40' LEFT
213+50	23' RIGHT



ILLINOIS DEPARTMENT OF TRANSPORTATION

**PROPOSED TRAFFIC SIGNALS**

SCALE: NOT TO SCALE  
DATE 12/15/92

DRAWN BY CADD  
CHECKED BY MRH

DATE: 12/15/92  
DGN: ONLY