

EXISTING TRAFFIC SIGNAL AND REMOVAL NOTES

1. THE REMOVAL ITEMS ARE AS INDICATED ON THE PLANS. THE CONTRACTOR SHALL VERIFY ALL REMOVAL ITEMS PRIOR TO BIDDING.
2. THE EXISTING TRAFFIC SIGNALS SHALL REMAIN IN OPERATION DURING THE CONSTRUCTION OF THE PROPOSED TRAFFIC SIGNALS.
3. ANY MAINTENANCE OF THE EXISTING SIGNALS SHALL BE CONSIDERED EXTRA WORK IN ACCORDANCE WITH ARTICLE 109.04 OF THE STANDARD SPECIFICATIONS.

REMOVE EXISTING CONCRETE FOUNDATIONS - QTY. 1 EA.	
QTY.	LOCATIONS
1.0 EA.	MAST ARM FOUNDATIONS (SW QUADRANT)

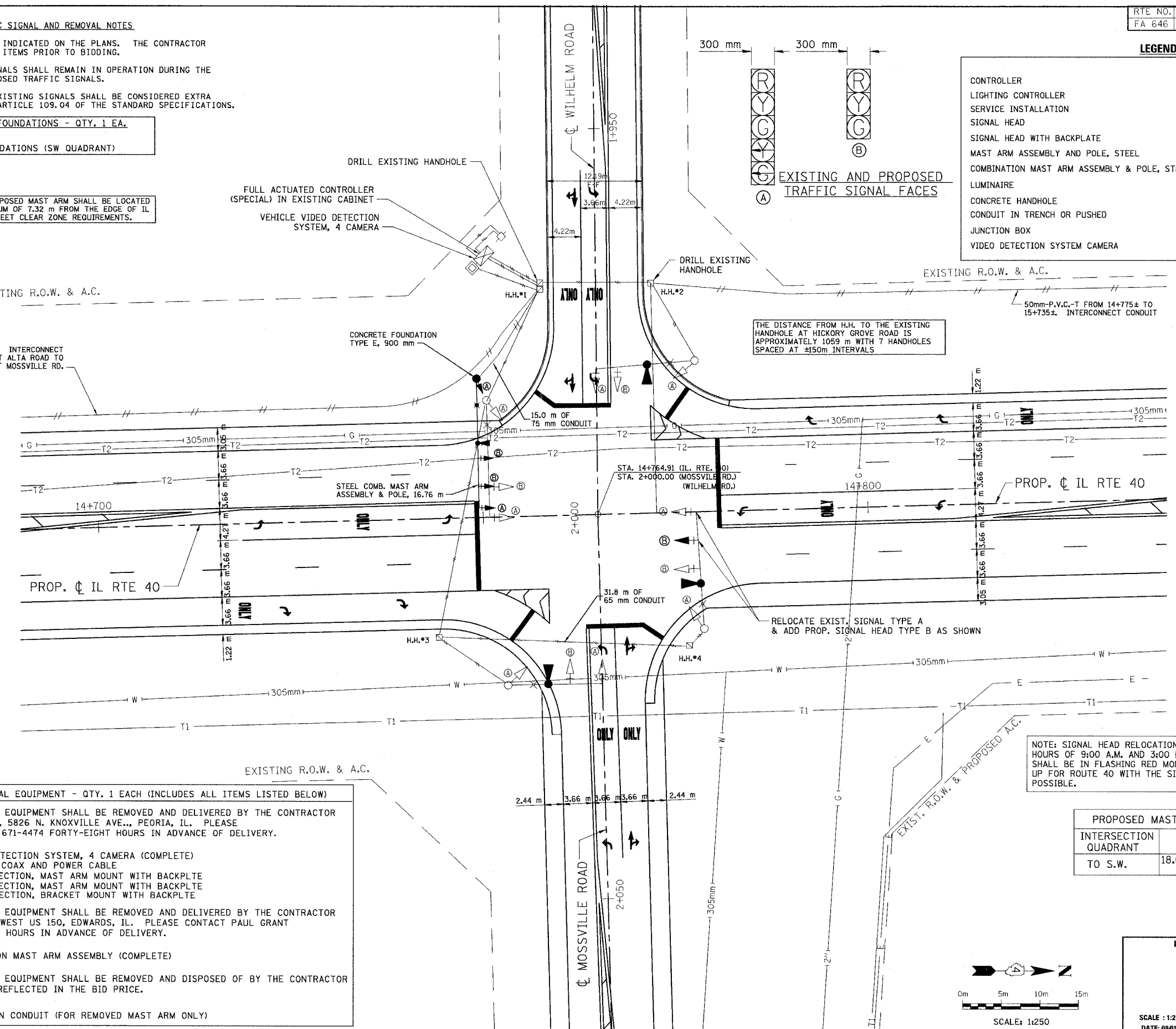
THE PROPOSED MAST ARM SHALL BE LOCATED A MINIMUM OF 7.32 m FROM THE EDGE OF IL 40 TO MEET CLEAR ZONE REQUIREMENTS.

LEGEND

	PROPOSED	EXISTING
CONTROLLER		
LIGHTING CONTROLLER		
SERVICE INSTALLATION		
SIGNAL HEAD		
SIGNAL HEAD WITH BACKPLATE		
MAST ARM ASSEMBLY AND POLE, STEEL		
COMBINATION MAST ARM ASSEMBLY & POLE, STEEL		
LUMINAIRE		
CONCRETE HANDHOLE		
CONDUIT IN TRENCH OR PUSHED		
JUNCTION BOX		
VIDEO DETECTION SYSTEM CAMERA		

PROP. 50 mm - P.V.C. INTERCONNECT CABLE FROM H.H. #2 AT ALTA ROAD TO EXISTING DOUBLE H.H. AT MOSSVILLE RD.

EXISTING R.O.W. & A.C.



THE DISTANCE FROM H.H. TO THE EXISTING HANDHOLE AT HICKORY GROVE ROAD IS APPROXIMATELY 1059 m WITH 7 HANDHOLES SPACED AT ±150m INTERVALS

50mm-P.V.C.-T FROM 14+775± TO 15+735±. INTERCONNECT CONDUIT

CONCRETE FOUNDATION TYPE E, 900 mm

STEEL COMB. MAST ARM ASSEMBLY & POLE, 16.76 m

31.8 m OF 65 mm CONDUIT

RELOCATE EXIST. SIGNAL TYPE A & ADD PROP. SIGNAL HEAD TYPE B AS SHOWN

NOTE: SIGNAL HEAD RELOCATION IS TO BE COMPLETED BETWEEN THE HOURS OF 9:00 A.M. AND 3:00 P.M. DURING THE RELOCATION THE SIGNALS SHALL BE IN FLASHING RED MODE. TEMPORARY STOP SIGNS SHALL BE SET UP FOR ROUTE 40 WITH THE SIGNALS OFF OR FLASHING RED WHEN POSSIBLE.

REMOVE EXISTING TRAFFIC SIGNAL EQUIPMENT - QTY. 1 EACH (INCLUDES ALL ITEMS LISTED BELOW)

THE FOLLOWING TRAFFIC SIGNAL EQUIPMENT SHALL BE REMOVED AND DELIVERED BY THE CONTRACTOR TO THE IDOT TRAFFIC BUILDING, 5826 N. KNOXVILLE AVE., PEORIA, IL. PLEASE CONTACT PAUL GRANT AT (309) 671-4474 FORTY-EIGHT HOURS IN ADVANCE OF DELIVERY.

QTY.	ITEM
1.0	VEHICLE VIDEO DETECTION SYSTEM, 4 CAMERA (COMPLETE)
ALL	VIDEO DETECTION COAX AND POWER CABLE
1.0	SIGNAL HEAD, 3-SECTION, MAST ARM MOUNT WITH BACKPLTE
1.0	SIGNAL HEAD, 5-SECTION, MAST ARM MOUNT WITH BACKPLTE
1.0	SIGNAL HEAD, 5-SECTION, BRACKET MOUNT WITH BACKPLTE

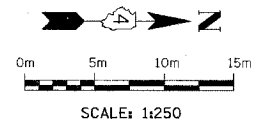
THE FOLLOWING TRAFFIC SIGNAL EQUIPMENT SHALL BE REMOVED AND DELIVERED BY THE CONTRACTOR TO THE IDOT WAREHOUSE, 6615 WEST US 150, EDWARDS, IL. PLEASE CONTACT PAUL GRANT AT (309) 671-4474 FORTY-EIGHT HOURS IN ADVANCE OF DELIVERY.

QTY.	ITEM
1.0	STEEL COMBINATION MAST ARM ASSEMBLY (COMPLETE)

THE FOLLOWING TRAFFIC SIGNAL EQUIPMENT SHALL BE REMOVED AND DISPOSED OF BY THE CONTRACTOR THE SALVAGE VALUE SHALL BE REFLECTED IN THE BID PRICE.

QTY.	ITEM
ALL	ELECTRIC CABLE IN CONDUIT (FOR REMOVED MAST ARM ONLY)

PROPOSED MAST ARM SCHEDULE	
INTERSECTION QUADRANT	INTERSECTION QUADRANT
TO S.W.	18.00m LT. STA. 14+749.6 (IL. RTE. 40)



SCALE: 1:250
DATE: 09/01/06

DRAWN BY:
CHECKED BY: