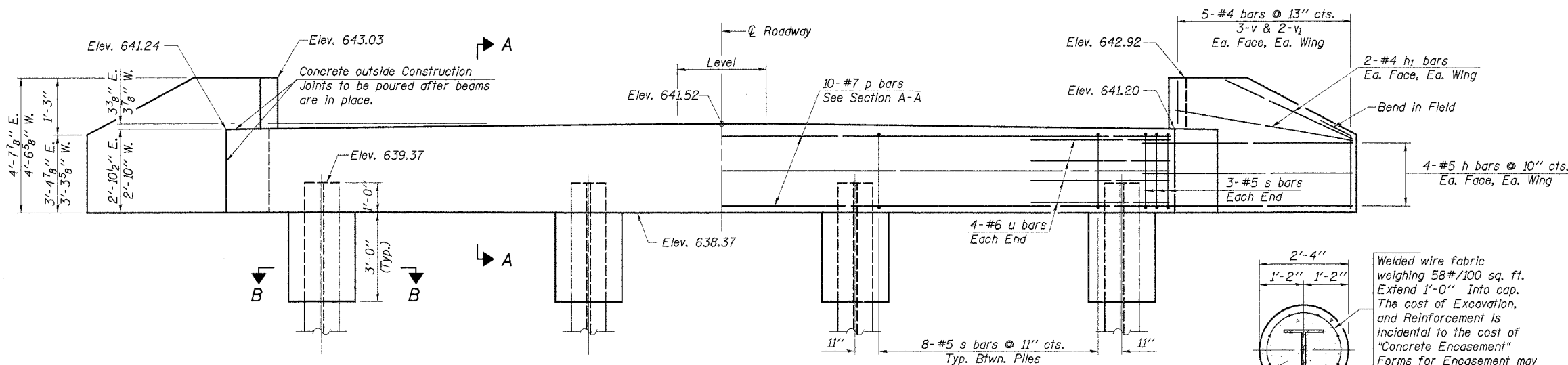
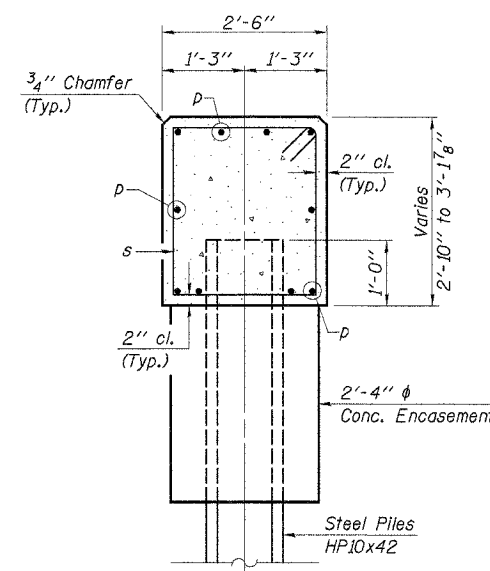
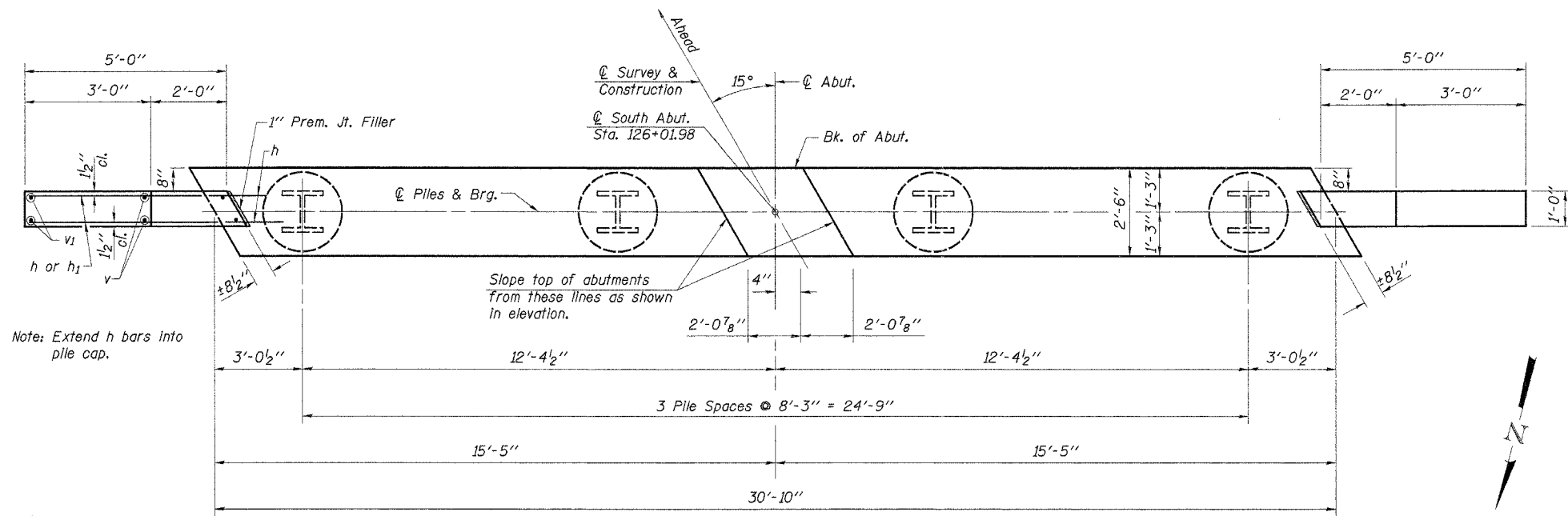


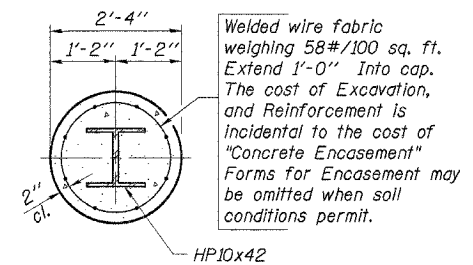
ROUTE NO.	SECTION	COUNTY	TOTAL SHEETS	SHEET NO.
C.H. 16	06-00084	MARSHALL	15	11
F.A.S. 365	-00-BR	ILLINOIS	FED. AID PROJ.	
CONTRACT NO. 89409				



SOUTH ABUTMENT BILL OF MATERIAL

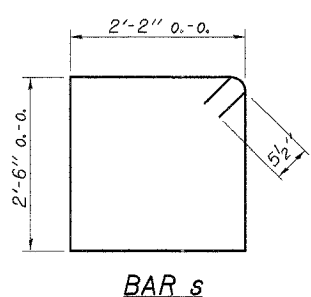
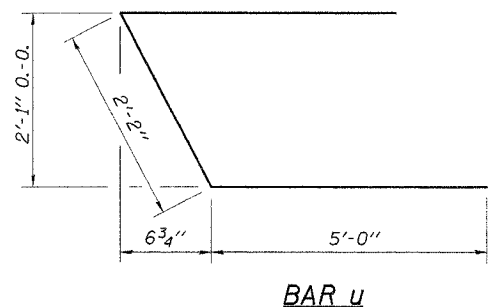
Bar	No.	Size	Length	Shape
h	16	#5	7'-0"	—
h ₁	8	#4	4'-9"	—
p	10	#7	30'-6"	—
s	30	#5	10'-3"	□
u	8	#6	12'-2"	—
v	12	#4	4'-4"	—
v ₁	8	#4	3'-6"	—
Concrete Structures		Cu. Yd.	10.2	
Reinforcement Bars		Pound	1,290	
Steel Piles HP10x42		Foot	96	
Concrete Encasement		Cu. Yd.	1.9	

SECTION B-B



PILE DATA

Type..... Steel Piles HP10x42
 No. Req'd. (2 Abutments)..... 4
 Design Capacity..... 30 Tons/Pile
 Driven Capacity..... 45 Tons/Pile
 Est. Length..... 24 Feet/Pile



DESIGNED	F.J.S.
CHECKED	S.F.M.
DRAWN	S.A.P.
CHECKED	S.F.M.

SOUTH ABUTMENT
 COUNTY HIGHWAY 16
 SECTION 06-00084-00-BR
 MARSHALL COUNTY
 STATION 125+55

4440 ASH GROVE
 SPRINGFIELD, IL 62711
 (217) 793-8600
 www.fehr-graham.com

FEHR-GRAHAM & ASSOCIATES, LLC
 ENGINEERING AND SCIENCE CONSULTANTS
 PROFESSIONAL ENGINEERS, ARCHITECTS & SCIENTISTS

JOB NO.: 46813
 FILE: 0423ABUT2.DGN
 DATE: 04/11/06