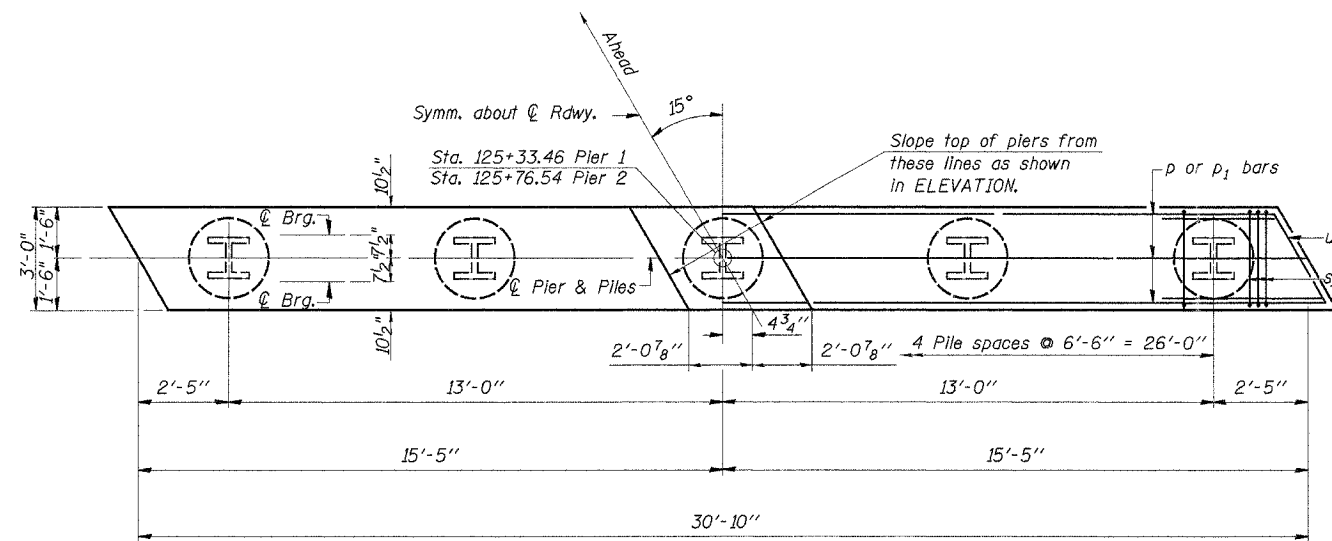


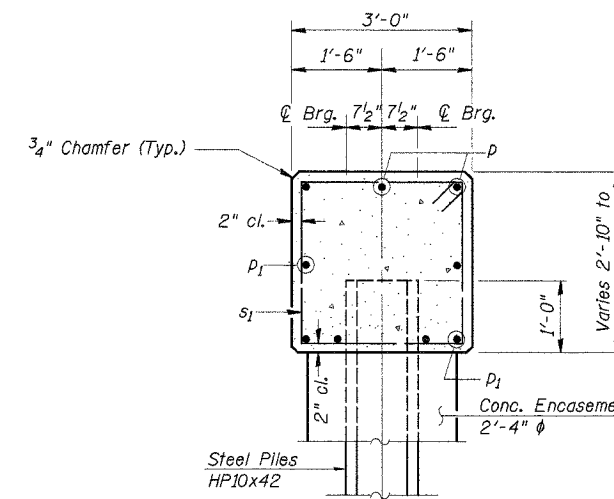
ROUTE NO.	SECTION	COUNTY	TOTAL SHEETS	SHEET NO.
C.H. 16	06-00084	MARSHALL	15	12
F.A.S. 365	-00-BR			
		ILLINOIS	FED. AID PROJ.	

CONTRACT NO. 89409

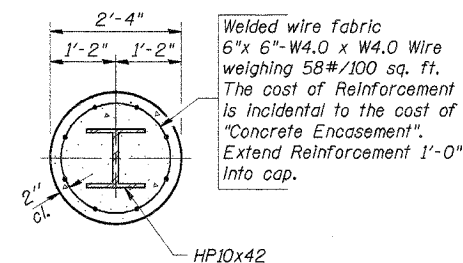
Note: All edges shall have standard $\frac{3}{4}$ " chamfer



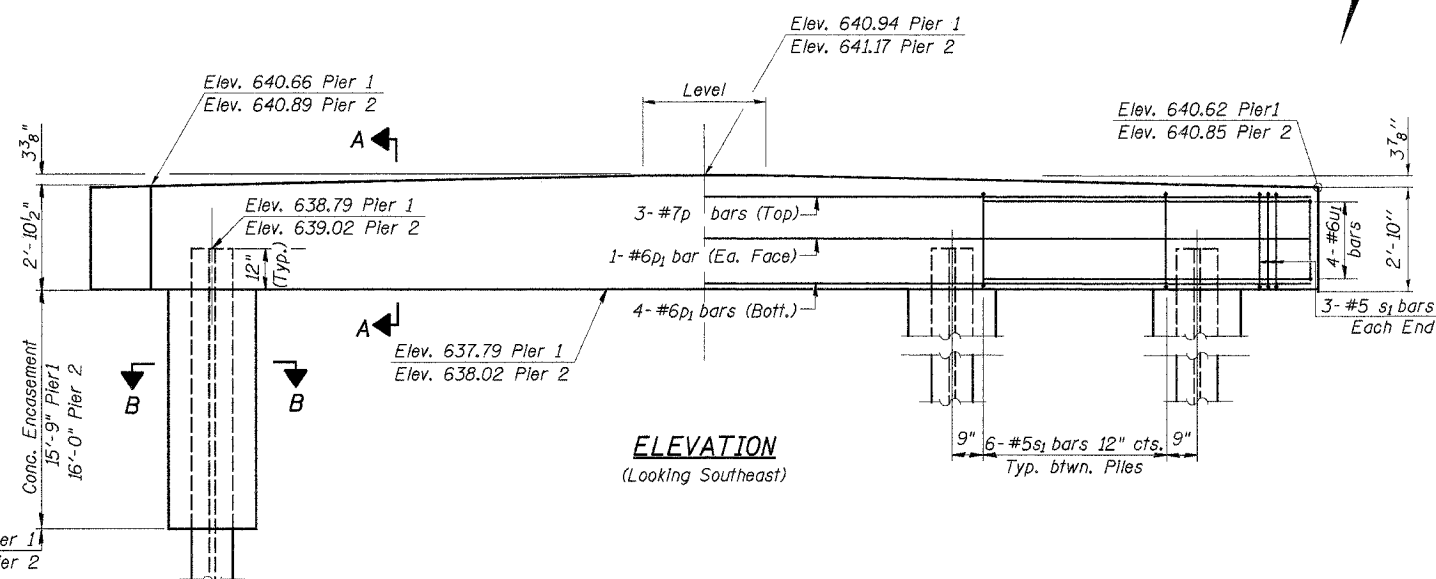
PLAN



SECTION A-A



SECTION B-B



ELEVATION
(Looking Southeast)

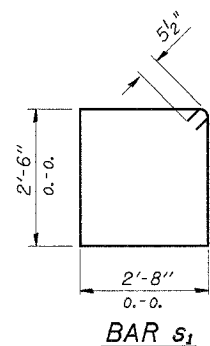
BILL OF MATERIAL - 2 PIERS

BAR	NO.	SIZE	LENGTH	SHAPE
p	6	#7	30'-6"	—
p ₁	12	#6	30'-6"	—
s ₁	60	#5	11'-3"	□
u ₁	16	#6	12'-8"	▽
Concrete Structures			Cu. Yd.	20.7
Reinforcement Bars			Pound	1,940
Steel Piles HP10x42			Foot	288
Test Pile Steel HP10x42			Each	1
Conc. Encasement			Cu. Yd.	25.2

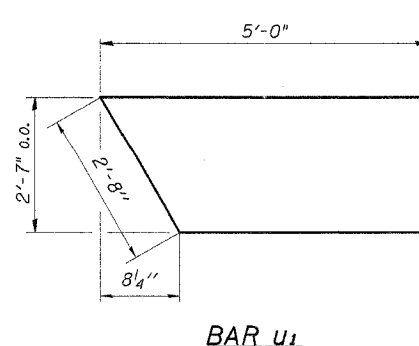
PILE DATA

Type _____ Steel Piles HP10x42
 Design Capacity _____ 44 Tons/Pile
 Driven Capacity _____ 66 Tons/Pile
 Est. Length _____ 32 Feet/Pile
 No. Req'd(2 Piers) _____ 10*

*Includes one Test Pile to be driven in a permanent location, at Pier 2.



BAR s₁



BAR u₁

DESIGNED	F.J.S.
CHECKED	S.F.M.
DRAWN	S.A.P.
CHECKED	S.F.M.

PIERS
 COUNTY HIGHWAY 16
 SECTION 06-00084-00-BR
 MARSHALL COUNTY
 STATION 125+55

4440 ASH GROVE
 SPRINGFIELD, IL 62711
 (217) 793-8600
 www.fehr-graham.com

FEHR-GRAHAM & ASSOCIATES, LLC
 ENGINEERING AND SCIENCE CONSULTANTS

JOB NO.: 46813
 FILE: 0423PIER.DGN
 DATE: 04/11/06