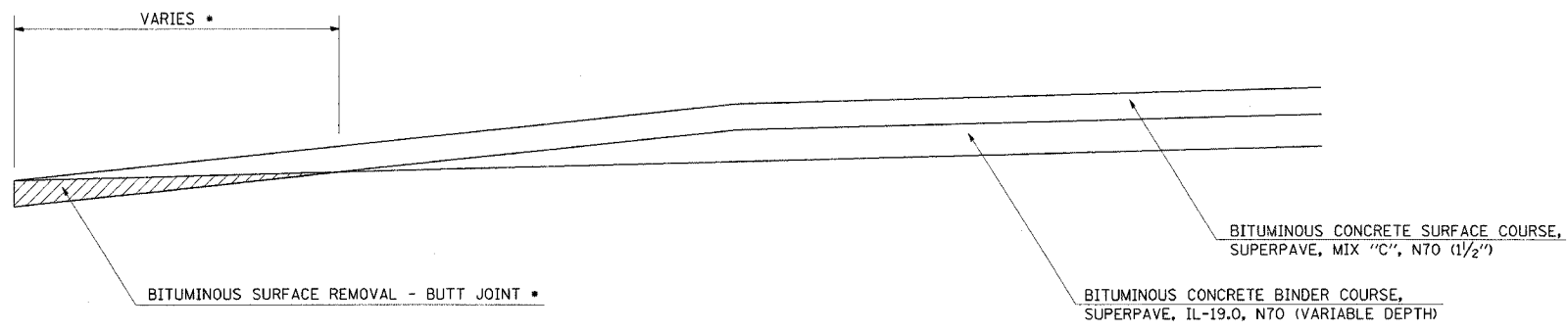
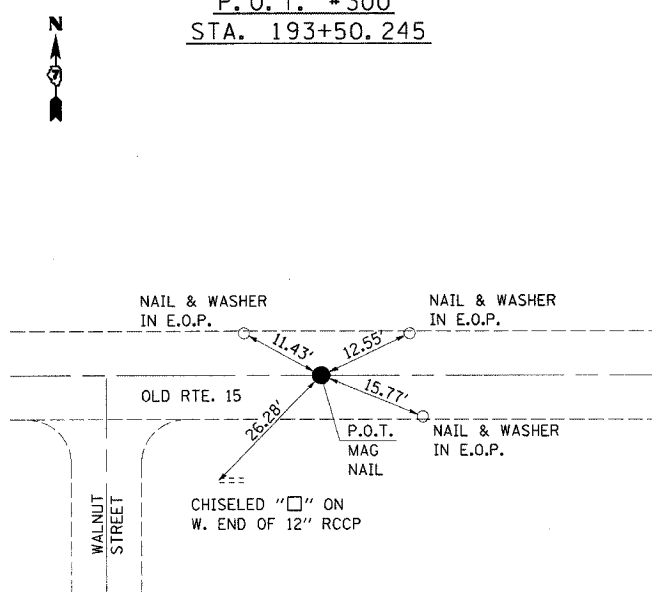


S.B.I. RTE.	SECTION	COUNTY	TOTAL SHEETS	SHEET NO.
IE	(8C)B-2	WABASH	36	6
STA.		TO STA.		
FED. ROAD DIST. NO.	ILLINOIS	FED. AID PROJECT		

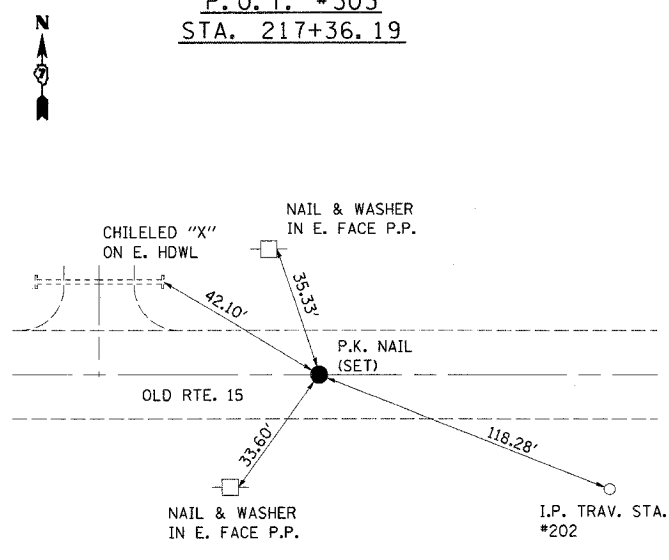


BUTT JOINT DETAIL
 STA. 201+32.48 TO STA. 201+77.48 45'
 STA. 207+50.00 TO STA. 208+00.00 50'

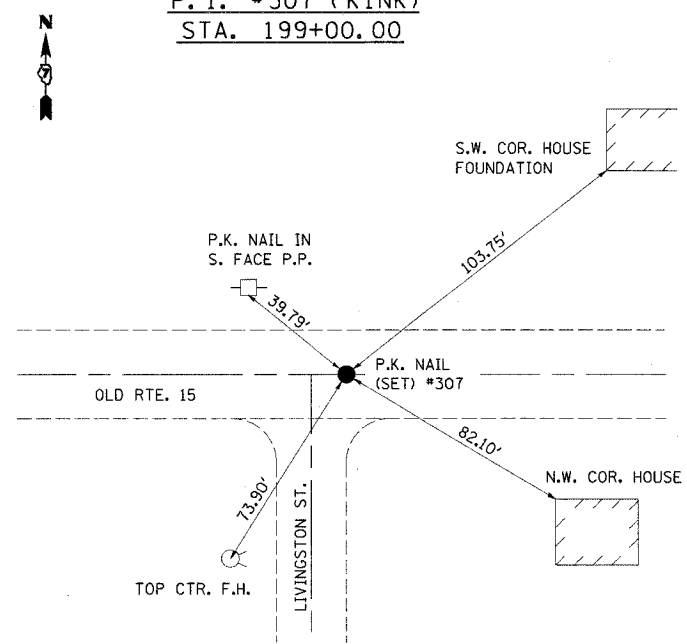
P.O.T. #300
 STA. 193+50.245



P.O.T. #303
 STA. 217+36.19



P.I. #307 (KINK)
 STA. 199+00.00



BENCHMARKS

- BM #100** - ELEV. = 398.43
RAILROAD SPIKE IN POWERPOLE ON N. SIDE OF INTERSECTION OF OLD ROUTE 15 AND LIVINGSTON STREET.
STA. 198+65/20' LT.
- BM #101** - ELEV. = 398.80
CHISELED SQUARE ON W. END OF S.W. WING WALL OF THE BONDAS CREEK BRIDGE.
STA. 202+88/15.45' RT.
- BM #102** - ELEV. = 398.72
CHISELED SQUARE ON E. END OF N.E. WING WALL OF THE BONDAS CREEK BRIDGE.
STA. 205+95/15.45' LT
- BM #104** - ELEV. = 397.43
CHISELED SQUARE IN CENTER OF W. HEADWALL OF THE E. ENTRANCE TO A HOUSE, W. OF TRAVERSE POINT 202 ON N. SIDE OF OLD ROUTE 15.
STA. 216+83/21.10' LT.

REVISIONS	
NAME	DATE

ILLINOIS DEPARTMENT OF TRANSPORTATION

BUTT JOINT DETAIL & ALIGNMENT TIES

SCALE: VERT. DRAWN BY
 HORIZ. CHECKED BY
 DATE

PLOT DATE = 8/23/2006
 FILE NAME = #FILE#
 USER NAME = #USER#