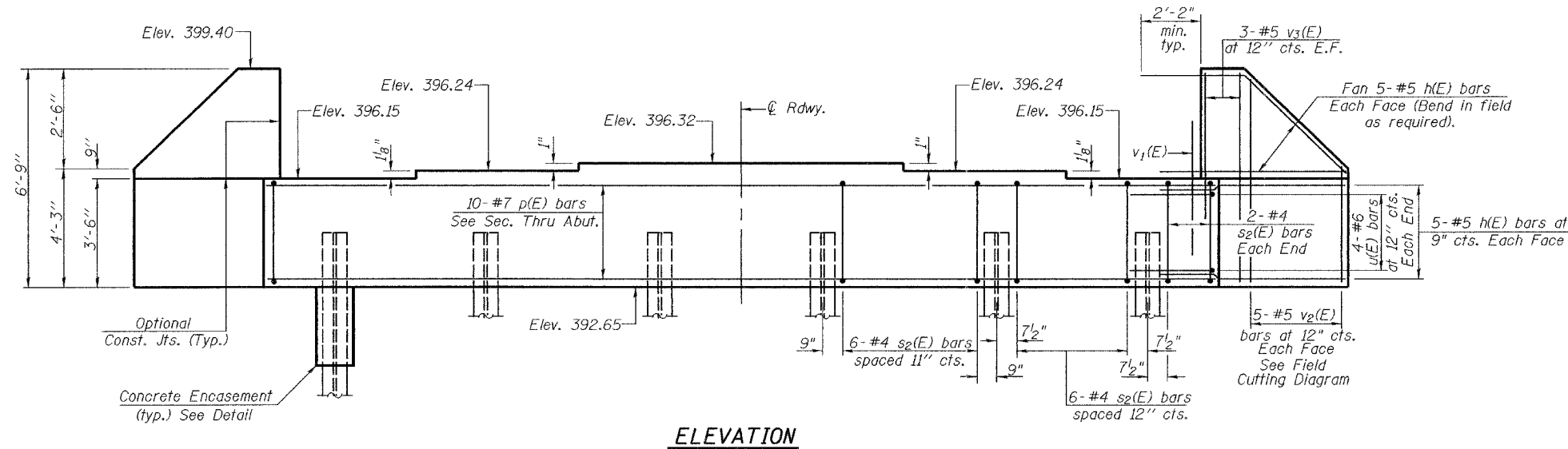


STATE OF ILLINOIS
DEPARTMENT OF TRANSPORTATION

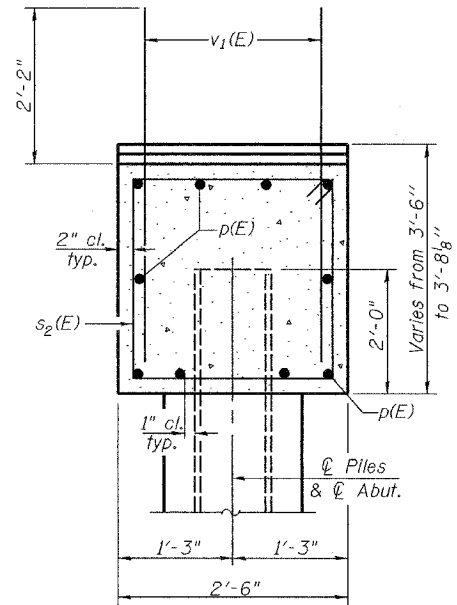
ROUTE NO.	SECTION	COUNTY	TOTAL SHEETS	SHEET NO.	SHEET NO. 14
S.B.I. 1	(8C)B-2	WABASH	36	25	21 SHEETS
FED. ROAD DIST. NO. 7	ILLINOIS	FED. AID PROJECT			

Contract #94783

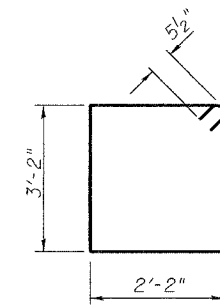
Notes:
Pour steps monolithically with cap.
Reinforcement bars designated (E) shall be epoxy coated.
Space reinforcement in cap to miss anchor bolts.
For anchor bolt installation details see sheet 12 of 21.
For bar splicer details see sheet 11 of 21.



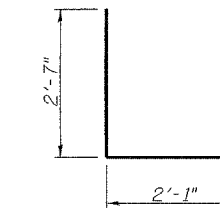
ELEVATION



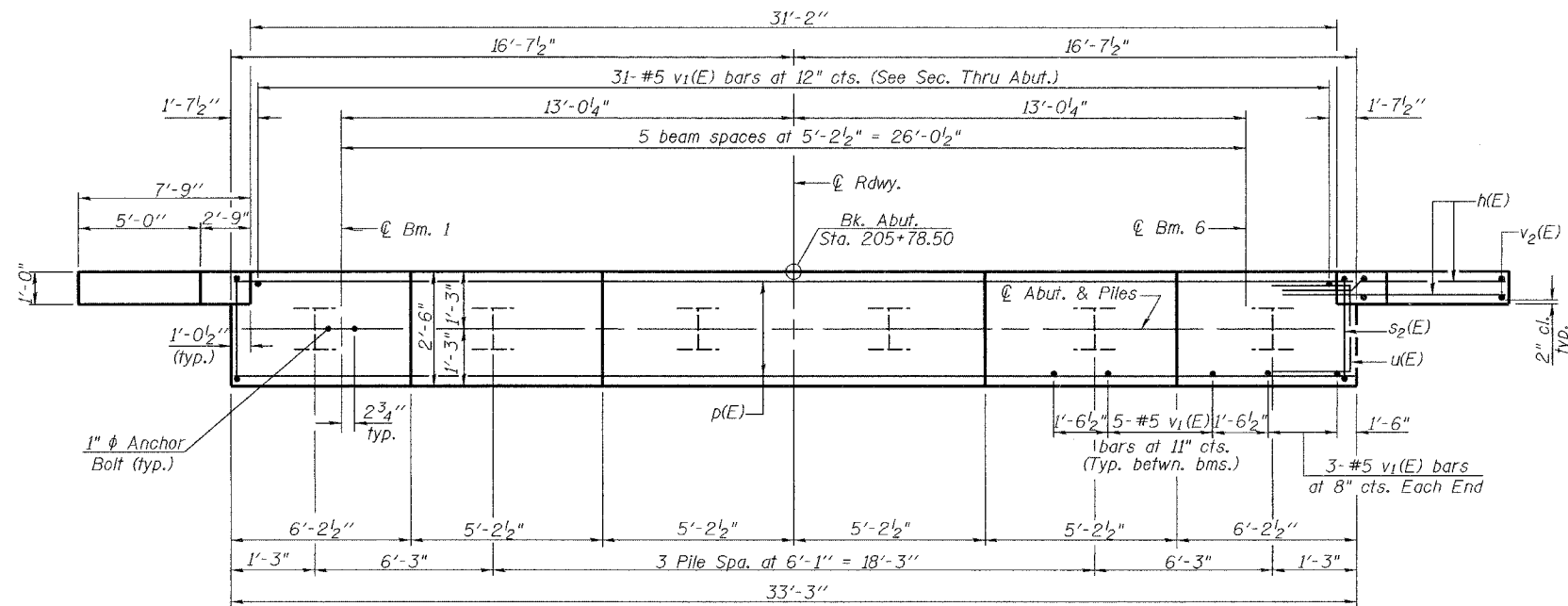
SEC. THRU ABUT.



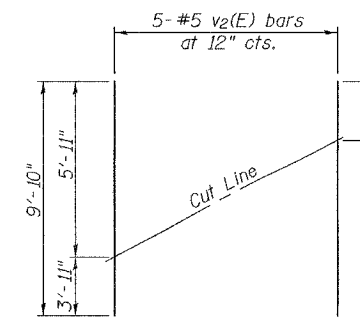
BAR s2(E)



BAR u(E)



PLAN



FIELD CUTTING DIAGRAM

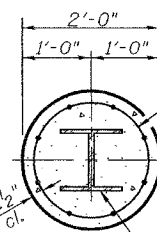
Order v2(E) bars full length. Cut as shown and use remainder of bars in opposite face.

BILL OF MATERIAL

Bar	No.	Size	Length	Shape
h(E)	40	#5	10'-4"	—
p(E)	10	#7	32'-11"	—
s2(E)	34	#4	11'-7"	□
u(E)	8	#6	7'-3"	▭
v1(E)	62	#5	4'-4"	—
v2(E)	10	#5	9'-10"	—
v3(E)	12	#5	6'-5"	—
Concrete Structures		Cu. Yd.	14.2	
Reinforcement Bars, Epoxy Coated		Pound	1920	
Furnishing Steel Piles HP12x53		Foot	354	
Driving Piles		Foot	354	
Structure Excavation		Cu. Yd.	117.2	

PILE DATA

Type: HP12x53
Nominal Required Bearing: 376 kips
Factored Resistance Available: 188 kips
Est. Length: 59'
No. Required: 6



SECTION A-A

Welded wire fabric 6x6-W4.0xW4.0 weighing 58#/100 sq. ft. The cost of Excavation, Concrete Encasement and Reinforcement is included with Furnishing Piles. Forms for Encasement may be omitted when soil conditions permit.

PILE ENCASEMENT DETAIL

DESIGNED	Dewey Coultas
CHECKED	Chi Cheung Chau
DRAWN	R. Sommer
CHECKED	D.H.C./C.C.C.

September 18 2006
EXAMINED *Thomas J. Domagalaki*
PASSED *Ralph E. Anderson*
ENGINEER OF BRIDGES AND STRUCTURES

EAST ABUTMENT
S.B.I. RT. 1 SEC. (8C)B-2
WABASH COUNTY
STATION 204+42.25
STRUCTURE No. 093-0022